

FKBP14 Antibody (N-term)
Purified Rabbit Polyclonal Antibody (Pab)
Catalog # AP6572a**Specification**

FKBP14 Antibody (N-term) - Product Information

Application	FC, IHC-P, WB,E
Primary Accession	O9NWM8
Other Accession	P59024
Reactivity	Human
Predicted	Mouse
Host	Rabbit
Clonality	Polyclonal
Isotype	Rabbit IgG
Calculated MW	24172
Antigen Region	37-68

FKBP14 Antibody (N-term) - Additional Information**Gene ID** 55033**Other Names**

Peptidyl-prolyl cis-trans isomerase FKBP14, PPIase FKBP14, 22 kDa FK506-binding protein, 22 kDa FKBP, FKBP-22, FK506-binding protein 14, FKBP-14, Rotamase, FKBP14, FKBP22

Target/Specificity

This FKBP14 antibody is generated from rabbits immunized with a KLH conjugated synthetic peptide between 37-68 amino acids from the N-terminal region of human FKBP14.

Dilution

FC~~1:10~50

IHC-P~~1:50~100

WB~~1:1000

E~~Use at an assay dependent concentration.

Format

Purified polyclonal antibody supplied in PBS with 0.09% (W/V) sodium azide. This antibody is prepared by Saturated Ammonium Sulfate (SAS) precipitation followed by dialysis against PBS.

Storage

Maintain refrigerated at 2-8°C for up to 2 weeks. For long term storage store at -20°C in small aliquots to prevent freeze-thaw cycles.

Precautions

FKBP14 Antibody (N-term) is for research use only and not for use in diagnostic or therapeutic procedures.

FKBP14 Antibody (N-term) - Protein Information

Name FKBP14

Synonyms FKBP22

Function PPlase which accelerates the folding of proteins during protein synthesis. Has a preference for substrates containing 4- hydroxylproline modifications, including type III collagen. May also target type VI and type X collagens.

Cellular Location

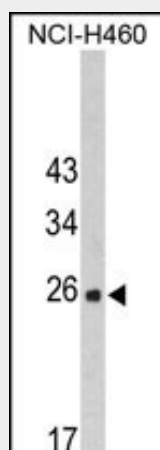
Endoplasmic reticulum lumen {ECO:0000255|PROSITE- ProRule:PRU10138, ECO:0000269|PubMed:22265013}

FKBP14 Antibody (N-term) - Protocols

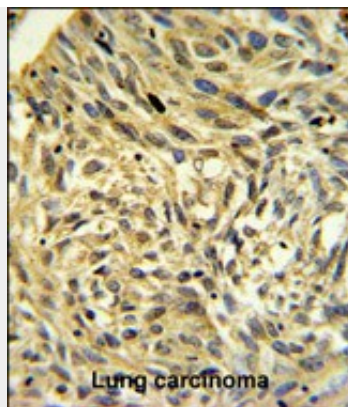
Provided below are standard protocols that you may find useful for product applications.

- [Western Blot](#)
- [Blocking Peptides](#)
- [Dot Blot](#)
- [Immunohistochemistry](#)
- [Immunofluorescence](#)
- [Immunoprecipitation](#)
- [Flow Cytometry](#)
- [Cell Culture](#)

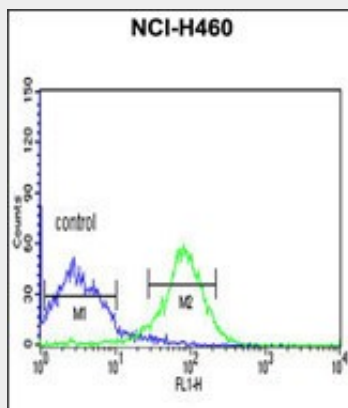
FKBP14 Antibody (N-term) - Images



Western blot analysis of FKBP14 Antibody (N-term) (Cat. #AP6572a) in NCI-H460 cell line lysates (35ug/lane). FKBP14 (arrow) was detected using the purified Pab.



FKBP14 Antibody (N-term) (Cat. #AP6572a) IHC analysis in formalin fixed and paraffin embedded human Lung carcinoma followed by peroxidase conjugation of the secondary antibody and DAB staining. This data demonstrates the use of the FKBP14 Antibody (N-term) for immunohistochemistry. Clinical relevance has not been evaluated.



FKBP14 Antibody (N-term) (Cat. #AP6572a) flow cytometric analysis of NCI-H460 cells (right histogram) compared to a negative control cell (left histogram). FITC-conjugated goat-anti-rabbit secondary antibodies were used for the analysis.

FKBP14 Antibody (N-term) - Background

PPIases accelerate the folding of proteins during protein synthesis.