

SPB3 Antibody (N-term)
Purified Rabbit Polyclonal Antibody (Pab)
Catalog # AP6579a**Specification**

SPB3 Antibody (N-term) - Product Information

| | |
|-------------------|------------------------|
| Application | FC, IHC-P, WB,E |
| Primary Accession | P29508 |
| Reactivity | Human |
| Host | Rabbit |
| Clonality | Polyclonal |
| Isotype | Rabbit IgG |
| Calculated MW | 44565 |
| Antigen Region | 40-69 |

SPB3 Antibody (N-term) - Additional Information**Gene ID** 6317**Other Names**

SerpB3, Protein T4-A, Squamous cell carcinoma antigen 1, SCCA-1, SERPINB3, SCCA, SCCA1

Target/Specificity

This SPB3 antibody is generated from rabbits immunized with a KLH conjugated synthetic peptide between 40-69 amino acids from the N-terminal region of human SPB3.

Dilution

FC~~1:10~50

IHC-P~~1:50~100

WB~~1:1000

E~~Use at an assay dependent concentration.

Format

Purified polyclonal antibody supplied in PBS with 0.09% (W/V) sodium azide. This antibody is prepared by Saturated Ammonium Sulfate (SAS) precipitation followed by dialysis against PBS.

Storage

Maintain refrigerated at 2-8°C for up to 2 weeks. For long term storage store at -20°C in small aliquots to prevent freeze-thaw cycles.

Precautions

SPB3 Antibody (N-term) is for research use only and not for use in diagnostic or therapeutic procedures.

SPB3 Antibody (N-term) - Protein Information**Name** SERPINB3

Synonyms SCCA, SCCA1

Function May act as a papain-like cysteine protease inhibitor to modulate the host immune response against tumor cells. Also functions as an inhibitor of UV-induced apoptosis via suppression of the activity of c-Jun NH(2)-terminal kinase (JNK1).

Cellular Location

Cytoplasm. Note=Seems to also be secreted in plasma by cancerous cells but at a low level

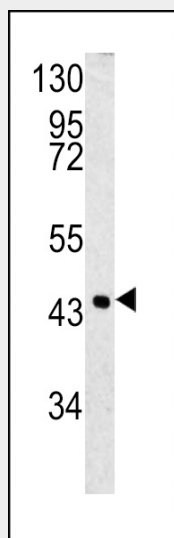
Tissue Location

Squamous cells. Expressed in some hepatocellular carcinoma (at protein level).

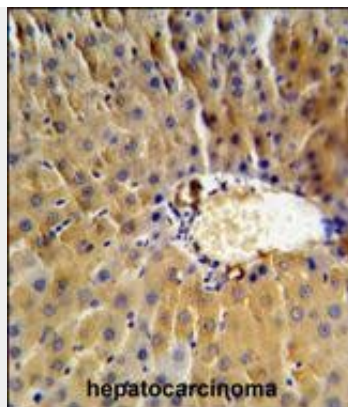
SPB3 Antibody (N-term) - Protocols

Provided below are standard protocols that you may find useful for product applications.

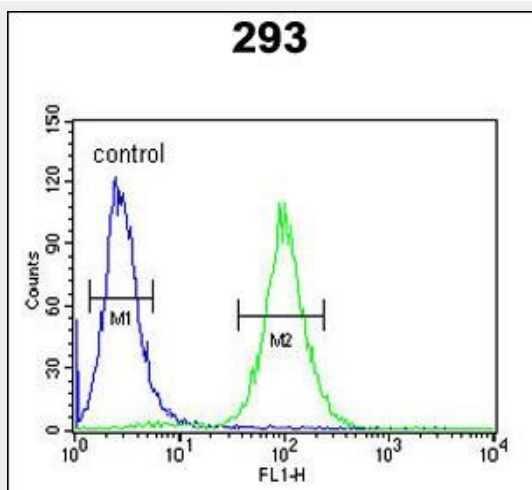
- [Western Blot](#)
- [Blocking Peptides](#)
- [Dot Blot](#)
- [Immunohistochemistry](#)
- [Immunofluorescence](#)
- [Immunoprecipitation](#)
- [Flow Cytometry](#)
- [Cell Culture](#)

SPB3 Antibody (N-term) - Images

Western blot analysis of SPB3 antibody (N-term) (Cat. #AP6579a) in 293 cell line lysates (35ug/lane). SPB3 (arrow) was detected using the purified Pab.



SPB3 Antibody (N-term) (Cat. #AP6579a) IHC analysis in formalin fixed and paraffin embedded human hepatocarcinoma followed by peroxidase conjugation of the secondary antibody and DAB staining. This data demonstrates the use of the SPB3 Antibody (N-term) for immunohistochemistry. Clinical relevance has not been evaluated.



SPB3 Antibody (N-term) (Cat. #AP6579a) flow cytometric analysis of 293 cells (right histogram) compared to a negative control cell (left histogram). FITC-conjugated goat-anti-rabbit secondary antibodies were used for the analysis.

SPB3 Antibody (N-term) - Background

SPB3 may act as a protease inhibitor to modulate the host immune response against tumor cells.

SPB3 Antibody (N-term) - References

- Turato, C., Dig Liver Dis 41 (3), 212-216 (2009)
 Ahmed, S.T., Biochem. Biophys. Res. Commun. 378 (4), 821-825 (2009)