

KLF6 Antibody (N-term)
Purified Rabbit Polyclonal Antibody (Pab)
Catalog # AP6588d**Specification**

KLF6 Antibody (N-term) - Product Information

Application	WB, FC,E
Primary Accession	O99612
Other Accession	O08584
Reactivity	Human
Predicted	Mouse
Host	Rabbit
Clonality	Polyclonal
Isotype	Rabbit IgG
Calculated MW	31865
Antigen Region	56-82

KLF6 Antibody (N-term) - Additional Information**Gene ID** 1316**Other Names**

Krueppel-like factor 6, B-cell-derived protein 1, Core promoter element-binding protein, GC-rich sites-binding factor GBF, Proto-oncogene BCD1, Suppressor of tumorigenicity 12 protein, Transcription factor Zf9, KLF6, BCD1, COPEB, CPBP, ST12

Target/Specificity

This KLF6 antibody is generated from rabbits immunized with a KLH conjugated synthetic peptide between 56-82 amino acids from the N-terminal region of human KLF6.

Dilution

WB~~1:1000

FC~~1:10~50

E~~Use at an assay dependent concentration.

Format

Purified polyclonal antibody supplied in PBS with 0.09% (W/V) sodium azide. This antibody is prepared by Saturated Ammonium Sulfate (SAS) precipitation followed by dialysis against PBS.

Storage

Maintain refrigerated at 2-8°C for up to 2 weeks. For long term storage store at -20°C in small aliquots to prevent freeze-thaw cycles.

Precautions

KLF6 Antibody (N-term) is for research use only and not for use in diagnostic or therapeutic procedures.

KLF6 Antibody (N-term) - Protein Information

Name KLF6

Synonyms BCD1, COPEB, CPBP, ST12

Function Transcriptional activator (By similarity). Binds a GC box motif. Could play a role in B-cell growth and development.

Cellular Location

Nucleus.

Tissue Location

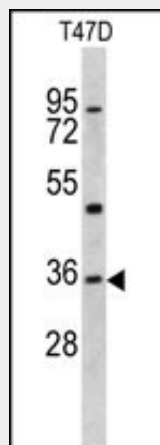
Highly expressed in placenta followed by spleen, thymus, prostate, testis, small intestine and colon. Weakly expressed in pancreas, lung, liver, heart and skeletal muscle. Also expressed in fetal brain, spleen and thymus

KLF6 Antibody (N-term) - Protocols

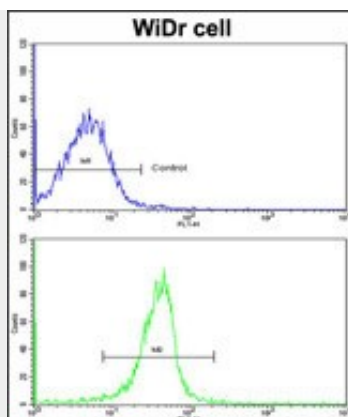
Provided below are standard protocols that you may find useful for product applications.

- [Western Blot](#)
- [Blocking Peptides](#)
- [Dot Blot](#)
- [Immunohistochemistry](#)
- [Immunofluorescence](#)
- [Immunoprecipitation](#)
- [Flow Cytometry](#)
- [Cell Culture](#)

KLF6 Antibody (N-term) - Images



Western blot analysis of KLF6 antibody (N-term) (Cat. #AP6588d) in T47D cell line lysates (35ug/lane). KLF6 (arrow) was detected using the purified Pab.



Flow cytometric analysis of widr cells using KLF6 Antibody (N-term)(bottom histogram) compared to a negative control cell (top histogram). FITC-conjugated goat-anti-rabbit secondary antibodies were used for the analysis.

KLF6 Antibody (N-term) - Background

COPEB is a member of the Kruppel-like family of transcription factors. The zinc finger protein is a transcriptional activator, and functions as a tumor suppressor.

KLF6 Antibody (N-term) - References

Sangodkar,J., Eur. J. Cancer 45 (4), 666-676 (2009)
DiFeo,A., Drug Resist. Updat. 12 (1-2), 1-7 (2009)