

DCN Antibody (Center)
Purified Rabbit Polyclonal Antibody (Pab)
Catalog # AP6590c**Specification**

DCN Antibody (Center) - Product Information

Application	IHC-P, FC, WB,E
Primary Accession	P07585
Other Accession	Q9XSD9 , P21793 , Q9TTE2
Reactivity	Human, Mouse
Predicted	Bovine, Pig, Sheep
Host	Rabbit
Clonality	Polyclonal
Isotype	Rabbit IgG
Antigen Region	122-150

DCN Antibody (Center) - Additional Information**Gene ID** 1634**Other Names**

Decorin, Bone proteoglycan II, PG-S2, PG40, DCN, SLRR1B

Target/Specificity

This DCN antibody is generated from rabbits immunized with a KLH conjugated synthetic peptide between 122-150 amino acids from the Central region of human DCN.

Dilution

IHC-P~~1:10~50

FC~~1:10~50

WB~~1:1000

E~~Use at an assay dependent concentration.

Format

Purified polyclonal antibody supplied in PBS with 0.09% (W/V) sodium azide. This antibody is prepared by Saturated Ammonium Sulfate (SAS) precipitation followed by dialysis against PBS.

Storage

Maintain refrigerated at 2-8°C for up to 2 weeks. For long term storage store at -20°C in small aliquots to prevent freeze-thaw cycles.

Precautions

DCN Antibody (Center) is for research use only and not for use in diagnostic or therapeutic procedures.

DCN Antibody (Center) - Protein Information**Name** DCN

Synonyms SLRR1B

Function May affect the rate of fibrils formation.

Cellular Location

Secreted, extracellular space, extracellular matrix. Secreted

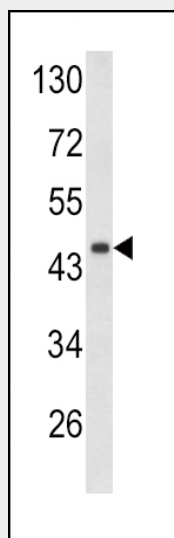
Tissue Location

Detected in placenta (at protein level) (PubMed:32337544). Detected in cerebrospinal fluid, fibroblasts and urine (at protein level) (PubMed:25326458, PubMed:36213313, PubMed:37453717).

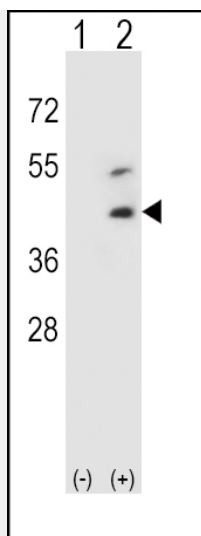
DCN Antibody (Center) - Protocols

Provided below are standard protocols that you may find useful for product applications.

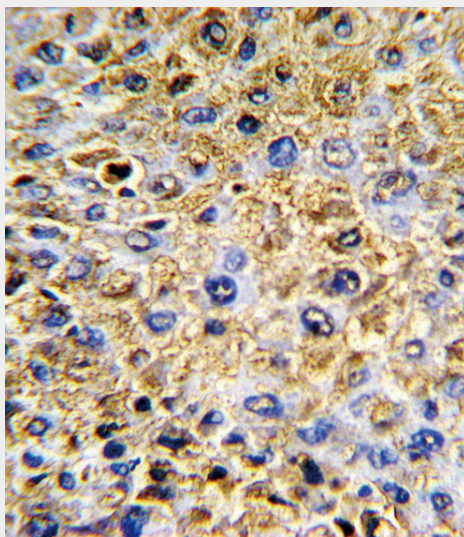
- [Western Blot](#)
- [Blocking Peptides](#)
- [Dot Blot](#)
- [Immunohistochemistry](#)
- [Immunofluorescence](#)
- [Immunoprecipitation](#)
- [Flow Cytometry](#)
- [Cell Culture](#)

DCN Antibody (Center) - Images

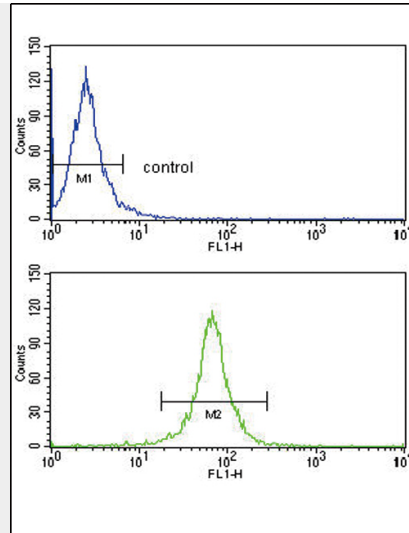
Western blot analysis of DCN antibody (Center) (Cat. #AP6590c) in mouse heart tissue lysates (35ug/lane). DCN (arrow) was detected using the purified Pab.



Western blot analysis of DCN (arrow) using rabbit polyclonal DCN Antibody (Center) (Cat. #AP6590c). 293 cell lysates (2 ug/lane) either nontransfected (Lane 1) or transiently transfected (Lane 2) with the DCN gene.



Formalin-fixed and paraffin-embedded human hepatocarcinoma with DCN Antibody (Center), which was peroxidase-conjugated to the secondary antibody, followed by DAB staining. This data demonstrates the use of this antibody for immunohistochemistry; clinical relevance has not been evaluated.



DCN Antibody (Center) (Cat.#AP6590c) flow cytometry analysis of HepG2 cells (bottom histogram) compared to a negative control cell (top histogram). FITC-conjugated goat-anti-rabbit secondary antibodies were used for the analysis.

DCN Antibody (Center) - Background

DCN is a small cellular or pericellular matrix proteoglycan that is closely related in structure to biglycan protein. The protein and biglycan are thought to be the result of a gene duplication. This protein is a component of connective tissue, binds to type I collagen fibrils, and plays a role in matrix assembly. It contains one attached glycosaminoglycan chain. This protein is capable of suppressing the growth of various tumor cell lines.

DCN Antibody (Center) - References

Goldoni, S., J. Cell Biol. 185 (4), 743-754 (2009)

DCN Antibody (Center) - Citations

- [Proteomic analysis of the effect of extracellular calcium ions on human mesenchymal stem cells: implications for bone tissue engineering.](#)