

ARF3 Antibody (Center D93)
Purified Rabbit Polyclonal Antibody (Pab)
Catalog # AP6600c**Specification**

ARF3 Antibody (Center D93) - Product Information

Application	WB,E
Primary Accession	P61204
Other Accession	P61206 , P61205 , Q5E9I6 , P84082 , Q8BSL7 , P84081 , P51643 , P84079 , P84078 , Q4R5P2 , P84077 , P84080
Reactivity	Human
Predicted	Bovine, Monkey, Mouse, Rat, Xenopus
Host	Rabbit
Clonality	Polyclonal
Isotype	Rabbit IgG
Calculated MW	20601
Antigen Region	78-106

ARF3 Antibody (Center D93) - Additional Information**Gene ID** 377**Other Names**

ADP-ribosylation factor 3, ARF3

Target/Specificity

This ARF3 antibody is generated from rabbits immunized with a KLH conjugated synthetic peptide between 78-106 amino acids from the Central region of human ARF3.

Dilution

WB~~1:1000

E~~Use at an assay dependent concentration.

Format

Purified polyclonal antibody supplied in PBS with 0.09% (W/V) sodium azide. This antibody is prepared by Saturated Ammonium Sulfate (SAS) precipitation followed by dialysis against PBS.

Storage

Maintain refrigerated at 2-8°C for up to 2 weeks. For long term storage store at -20°C in small aliquots to prevent freeze-thaw cycles.

Precautions

ARF3 Antibody (Center D93) is for research use only and not for use in diagnostic or therapeutic procedures.

ARF3 Antibody (Center D93) - Protein Information

Name ARF3

Function GTP-binding protein that functions as an allosteric activator of the cholera toxin catalytic subunit, an ADP-ribosyltransferase. Involved in protein trafficking; may modulate vesicle budding and uncoating within the Golgi apparatus.

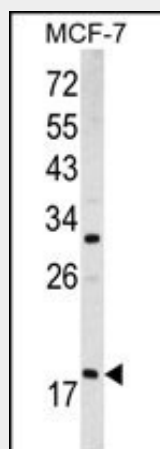
Cellular Location

Golgi apparatus. Cytoplasm, perinuclear region

ARF3 Antibody (Center D93) - Protocols

Provided below are standard protocols that you may find useful for product applications.

- [Western Blot](#)
- [Blocking Peptides](#)
- [Dot Blot](#)
- [Immunohistochemistry](#)
- [Immunofluorescence](#)
- [Immunoprecipitation](#)
- [Flow Cytometry](#)
- [Cell Culture](#)

ARF3 Antibody (Center D93) - Images

Western blot analysis of ARF3 antibody (Center D93) (Cat. #AP6600c) in MCF-7 cell line lysates (35ug/lane). ARF3 (arrow) was detected using the purified Pab.

ARF3 Antibody (Center D93) - Background

ADP-ribosylation factor 3 (ARF3) is a member of the human ARF family. These small guanine nucleotide-binding proteins stimulate the ADP-ribosyltransferase activity of cholera toxin and play a role in vesicular trafficking and as activators of phospholipase D. ARF3 include 6 ARF proteins and 11 ARF-like proteins and constitute 1 family of the RAS superfamily. The ARF proteins are categorized as class I (ARF1, ARF2, and ARF3), class II (ARF4 and ARF5) and class III (ARF6) and members of each class share a common gene organization.

ARF3 Antibody (Center D93) - References

Li, F., FEBS Lett. 524 (1-3), 49-53 (2002)
Lee, F.J., J. Biol. Chem. 267 (34), 24441-24445 (1992)