

**CDCA3 Antibody (N-term)**  
**Purified Rabbit Polyclonal Antibody (Pab)**  
**Catalog # AP6614a****Specification**

---

**CDCA3 Antibody (N-term) - Product Information**

Application	WB, IHC-P, FC,E
Primary Accession	<a href="#">Q99618</a>
Reactivity	Human, Mouse
Host	Rabbit
Clonality	Polyclonal
Isotype	Rabbit IgG
Calculated MW	28998
Antigen Region	41-69

**CDCA3 Antibody (N-term) - Additional Information****Gene ID** 83461**Other Names**

Cell division cycle-associated protein 3, Gene-rich cluster protein C8, Trigger of mitotic entry protein 1, TOME-1, CDCA3, C8, GRCC8, TOME1

**Target/Specificity**

This CDCA3 antibody is generated from rabbits immunized with a KLH conjugated synthetic peptide between 41-69 amino acids from the N-terminal region of human CDCA3.

**Dilution**

WB~~1:1000

IHC-P~~1:50~100

FC~~1:10~50

E~~Use at an assay dependent concentration.

**Format**

Purified polyclonal antibody supplied in PBS with 0.09% (W/V) sodium azide. This antibody is prepared by Saturated Ammonium Sulfate (SAS) precipitation followed by dialysis against PBS.

**Storage**

Maintain refrigerated at 2-8°C for up to 2 weeks. For long term storage store at -20°C in small aliquots to prevent freeze-thaw cycles.

**Precautions**

CDCA3 Antibody (N-term) is for research use only and not for use in diagnostic or therapeutic procedures.

**CDCA3 Antibody (N-term) - Protein Information****Name** CDCA3

**Synonyms** C8, GRCC8, TOME1

**Function** F-box-like protein which is required for entry into mitosis. Acts by participating in E3 ligase complexes that mediate the ubiquitination and degradation of WEE1 kinase at G2/M phase (By similarity).

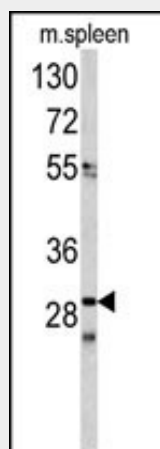
**Cellular Location**  
Cytoplasm, cytosol.

### CDCA3 Antibody (N-term) - Protocols

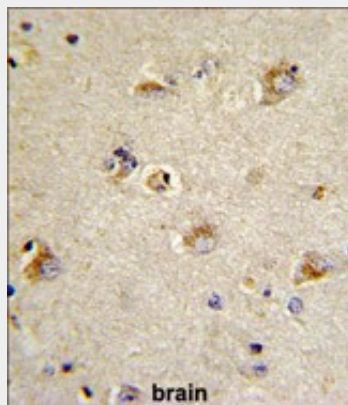
Provided below are standard protocols that you may find useful for product applications.

- [Western Blot](#)
- [Blocking Peptides](#)
- [Dot Blot](#)
- [Immunohistochemistry](#)
- [Immunofluorescence](#)
- [Immunoprecipitation](#)
- [Flow Cytometry](#)
- [Cell Culture](#)

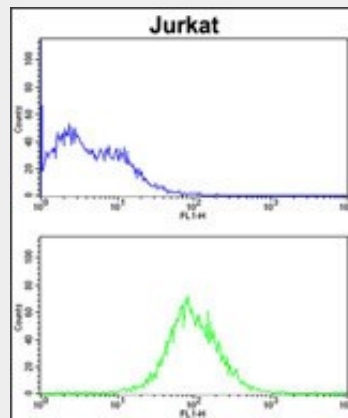
### CDCA3 Antibody (N-term) - Images



Western blot analysis of CDCA3 antibody (N-term) (Cat. #AP6614a) in mouse spleen tissue lysates(35ug/lane). CDCA3 (arrow) was detected using the purified Pab.



Formalin-fixed and paraffin-embedded human brain tissue reacted with CDCA3 Antibody (N-term), which was peroxidase-conjugated to the secondary antibody, followed by DAB staining. This data demonstrates the use of this antibody for immunohistochemistry; clinical relevance has not been evaluated.



CDCA3 Antibody (N-term) (Cat. #AP6614a) flow cytometric analysis of Jurkat cells (bottom histogram) compared to a negative control cell (top histogram). FITC-conjugated goat-anti-rabbit secondary antibodies were used for the analysis.

#### **CDCA3 Antibody (N-term) - Background**

CDCA3 is a F-box-like protein which is required for entry into mitosis. It acts by participating to E3 ligase complexes that mediate the ubiquitination and degradation of WEE1 kinase at G2/M phase.

#### **CDCA3 Antibody (N-term) - References**

Daub H., Mol. Cell 31:438-448(2008)