

CFHL1 Antibody (C-term)
Purified Rabbit Polyclonal Antibody (Pab)
Catalog # AP6615b**Specification**

CFHL1 Antibody (C-term) - Product Information

Application	WB, IHC-P, FC,E
Primary Accession	Q03591
Reactivity	Human
Host	Rabbit
Clonality	Polyclonal
Isotype	Rabbit IgG
Calculated MW	37651
Antigen Region	270-297

CFHL1 Antibody (C-term) - Additional Information**Gene ID** 3078**Other Names**

Complement factor H-related protein 1, FHR-1, H factor-like protein 1, H-factor-like 1, H36, CFHR1, CFHL, CFHL1, CFHL1P, CFHR1P, FHR1, HFL1, HFL2

Target/Specificity

This CFHL1 antibody is generated from rabbits immunized with a KLH conjugated synthetic peptide between 270-297 amino acids from the C-terminal region of human CFHL1.

Dilution

WB~~1:1000
IHC-P~~1:50~100
FC~~1:10~50
E~~Use at an assay dependent concentration.

Format

Purified polyclonal antibody supplied in PBS with 0.09% (W/V) sodium azide. This antibody is prepared by Saturated Ammonium Sulfate (SAS) precipitation followed by dialysis against PBS.

Storage

Maintain refrigerated at 2-8°C for up to 2 weeks. For long term storage store at -20°C in small aliquots to prevent freeze-thaw cycles.

Precautions

CFHL1 Antibody (C-term) is for research use only and not for use in diagnostic or therapeutic procedures.

CFHL1 Antibody (C-term) - Protein Information**Name** CFHR1

Synonyms CFHL, CFHL1, CFHL1P, CFHR1P, FHR1, HFL1,

Function Involved in complement regulation. The dimerized forms have avidity for tissue-bound complement fragments and efficiently compete with the physiological complement inhibitor CFH. Can associate with lipoproteins and may play a role in lipid metabolism.

Cellular Location

Secreted.

Tissue Location

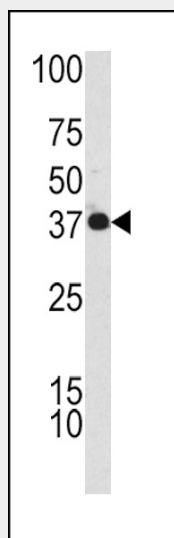
Expressed by the liver and secreted in plasma.

CFHL1 Antibody (C-term) - Protocols

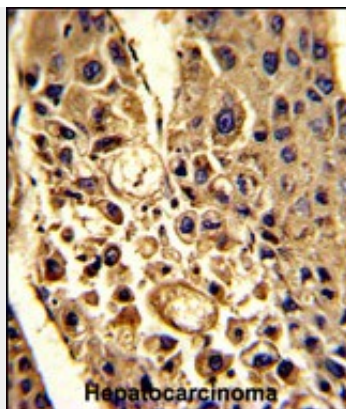
Provided below are standard protocols that you may find useful for product applications.

- [Western Blot](#)
- [Blocking Peptides](#)
- [Dot Blot](#)
- [Immunohistochemistry](#)
- [Immunofluorescence](#)
- [Immunoprecipitation](#)
- [Flow Cytometry](#)
- [Cell Culture](#)

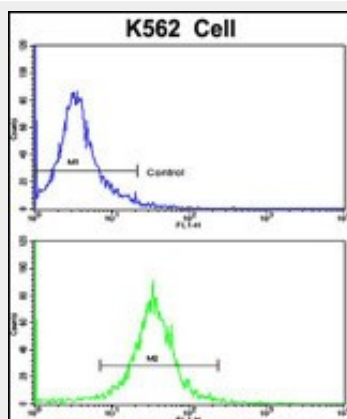
CFHL1 Antibody (C-term) - Images



Western blot analysis of CFHL1 antibody (C-term) (Cat. #AP6615b) in K562 cell line lysates (35ug/lane). CFHL1 (arrow) was detected using the purified Pab.



Formalin-fixed and paraffin-embedded human hepatocarcinoma with CFHL1 Antibody (C-term), which was peroxidase-conjugated to the secondary antibody, followed by DAB staining. This data demonstrates the use of this antibody for immunohistochemistry; clinical relevance has not been evaluated.



Flow cytometric analysis of K562 cells using CFHL1 Antibody (C-term)(bottom histogram) compared to a negative control cell (top histogram). FITC-conjugated goat-anti-rabbit secondary antibodies were used for the analysis.

CFHL1 Antibody (C-term) - Background

CFHL1 might be involved in complement regulation. The protein can associate with lipoproteins and may play a role in lipid metabolism.

CFHL1 Antibody (C-term) - References

Grosskinsky,S., PLoS ONE 4 (3), E4858 (2009)
Siegel,C., J. Biol. Chem. 283 (50), 34855-34863 (2008)