

RRM2 Antibody (Center)
Purified Rabbit Polyclonal Antibody (Pab)
Catalog # AP6619c**Specification**

RRM2 Antibody (Center) - Product Information

Application	WB, IHC-P,E
Primary Accession	P31350
Other Accession	Q4R7Q7
Reactivity	Human
Predicted	Monkey
Host	Rabbit
Clonality	Polyclonal
Isotype	Rabbit IgG
Calculated MW	44878
Antigen Region	96-125

RRM2 Antibody (Center) - Additional Information**Gene ID** 6241**Other Names**

Ribonucleoside-diphosphate reductase subunit M2, Ribonucleotide reductase small chain, Ribonucleotide reductase small subunit, RRM2, RR2

Target/Specificity

This RRM2 antibody is generated from rabbits immunized with a KLH conjugated synthetic peptide between 96-125 amino acids from the Central region of human RRM2.

Dilution

WB~~1:1000

IHC-P~~1:50~100

E~~Use at an assay dependent concentration.

Format

Purified polyclonal antibody supplied in PBS with 0.09% (W/V) sodium azide. This antibody is prepared by Saturated Ammonium Sulfate (SAS) precipitation followed by dialysis against PBS.

Storage

Maintain refrigerated at 2-8°C for up to 2 weeks. For long term storage store at -20°C in small aliquots to prevent freeze-thaw cycles.

Precautions

RRM2 Antibody (Center) is for research use only and not for use in diagnostic or therapeutic procedures.

RRM2 Antibody (Center) - Protein Information

Name RRM2

Synonyms RR2

Function Provides the precursors necessary for DNA synthesis. Catalyzes the biosynthesis of deoxyribonucleotides from the corresponding ribonucleotides. Inhibits Wnt signaling.

Cellular Location

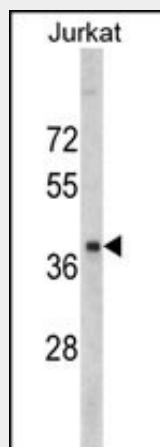
Cytoplasm. Nucleus. Note=Localized to the cytoplasm in S phase cells. May localize to the nucleus in G2 phase cells

RRM2 Antibody (Center) - Protocols

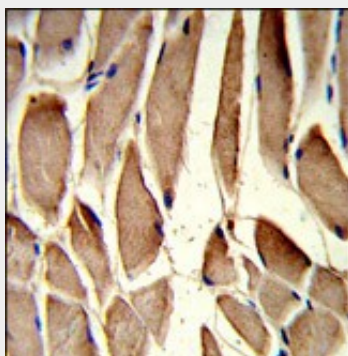
Provided below are standard protocols that you may find useful for product applications.

- [Western Blot](#)
- [Blocking Peptides](#)
- [Dot Blot](#)
- [Immunohistochemistry](#)
- [Immunofluorescence](#)
- [Immunoprecipitation](#)
- [Flow Cytometry](#)
- [Cell Culture](#)

RRM2 Antibody (Center) - Images



Western blot analysis of RRM2 antibody (Center) (Cat. #AP6619c) in Jurkat cell line lysates (35ug/lane). RRM2 (arrow) was detected using the purified Pab.



Formalin-fixed and paraffin-embedded human skeletal muscle reacted with RRM2 Antibody (Center), which was peroxidase-conjugated to the secondary antibody, followed by DAB staining. This data demonstrates the use of this antibody for immunohistochemistry; clinical relevance has not been evaluated.

RRM2 Antibody (Center) - Background

RRM2 is one of two non-identical subunits for ribonucleotide reductase. This reductase catalyzes the formation of deoxyribonucleotides from ribonucleotides. Synthesis of the protein (M2) is regulated in a cell-cycle dependent fashion.

RRM2 Antibody (Center) - References

Kolesar,J., Cancer Chemother. Pharmacol. 64 (1), 79-86 (2009)
Liu,X., Methods Mol. Biol. 477, 195-206 (2008)