

AZGP1 Antibody (N-term)
Purified Rabbit Polyclonal Antibody (Pab)
Catalog # AP6628a**Specification**

AZGP1 Antibody (N-term) - Product Information

Application	WB, IHC-P,E
Primary Accession	P25311
Reactivity	Human
Host	Rabbit
Clonality	Polyclonal
Isotype	Rabbit IgG
Calculated MW	34259
Antigen Region	5-32

AZGP1 Antibody (N-term) - Additional Information**Gene ID** 563**Other Names**

Zinc-alpha-2-glycoprotein, Zn-alpha-2-GP, Zn-alpha-2-glycoprotein, AZGP1, ZAG, ZNGP1

Target/Specificity

This AZGP1 antibody is generated from rabbits immunized with a KLH conjugated synthetic peptide between 5-32 amino acids from the N-terminal region of human AZGP1.

Dilution

WB~~1:1000

IHC-P~~1:50~100

E~~Use at an assay dependent concentration.

Format

Purified polyclonal antibody supplied in PBS with 0.09% (W/V) sodium azide. This antibody is prepared by Saturated Ammonium Sulfate (SAS) precipitation followed by dialysis against PBS.

Storage

Maintain refrigerated at 2-8°C for up to 2 weeks. For long term storage store at -20°C in small aliquots to prevent freeze-thaw cycles.

Precautions

AZGP1 Antibody (N-term) is for research use only and not for use in diagnostic or therapeutic procedures.

AZGP1 Antibody (N-term) - Protein Information**Name** AZGP1**Synonyms** ZAG, ZNGP1

Function Stimulates lipid degradation in adipocytes and causes the extensive fat losses associated with some advanced cancers. May bind polyunsaturated fatty acids.

Cellular Location

Secreted.

Tissue Location

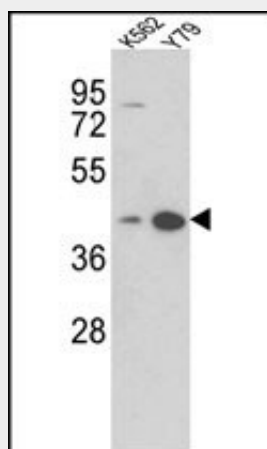
Blood plasma, seminal plasma, urine, saliva, sweat, epithelial cells of various human glands, liver

AZGP1 Antibody (N-term) - Protocols

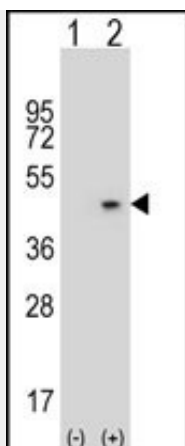
Provided below are standard protocols that you may find useful for product applications.

- [Western Blot](#)
- [Blocking Peptides](#)
- [Dot Blot](#)
- [Immunohistochemistry](#)
- [Immunofluorescence](#)
- [Immunoprecipitation](#)
- [Flow Cytometry](#)
- [Cell Culture](#)

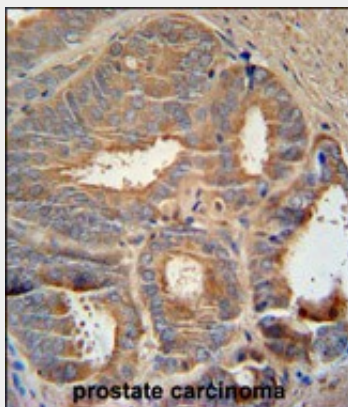
AZGP1 Antibody (N-term) - Images



Western blot analysis of AZGP1 Antibody (N-term) (Cat. #AP6628a) in K562, Y79 cell line lysates (35ug/lane). AZGP1 (arrow) was detected using the purified Pab.



Western blot analysis of AZGP1 (arrow) using rabbit polyclonal AZGP1 Antibody (N-term) (Cat. #AP6628a). 293 cell lysates (2 ug/lane) either nontransfected (Lane 1) or transiently transfected (Lane 2) with the AZGP1 gene.



AZGP1 Antibody (N-term) (Cat. #AP6628a) immunohistochemistry analysis in formalin fixed and paraffin embedded human prostate carcinoma followed by peroxidase conjugation of the secondary antibody and DAB staining. This data demonstrates the use of the AZGP1 Antibody (N-term) for immunohistochemistry. Clinical relevance has not been evaluated.

AZGP1 Antibody (N-term) - Background

AZGP1 stimulates lipid degradation in adipocytes and causes the extensive fat losses associated with some advanced cancers. It may bind polyunsaturated fatty acids.

AZGP1 Antibody (N-term) - References

Yeung,D.C., J. Clin. Endocrinol. Metab. 94 (7), 2531-2536 (2009)
Vanni,H., Chest 135 (5), 1197-1208 (2009)

AZGP1 Antibody (N-term) - Citations

- [Development of a whole-cell biosensor for ethylene oxide and ethylene](#)