

ETV4 Antibody (C-term)
Purified Rabbit Polyclonal Antibody (Pab)
Catalog # AP6642B**Specification**

ETV4 Antibody (C-term) - Product Information

Application	WB, FC, IHC-P,E
Primary Accession	P43268
Other Accession	P28322
Reactivity	Human, Mouse
Host	Rabbit
Clonality	Polyclonal
Isotype	Rabbit IgG
Calculated MW	53938
Antigen Region	419-447

ETV4 Antibody (C-term) - Additional Information**Gene ID** 2118**Other Names**

ETS translocation variant 4, Adenovirus E1A enhancer-binding protein, E1A-F, Polyomavirus enhancer activator 3 homolog, Protein PEA3, ETV4, E1AF, PEA3

Target/Specificity

This ETV4 antibody is generated from rabbits immunized with a KLH conjugated synthetic peptide between 419-447 amino acids from the C-terminal region of human ETV4.

Dilution

WB~~1:1000
FC~~1:10~50
IHC-P~~1:10~50
E~~Use at an assay dependent concentration.

Format

Purified polyclonal antibody supplied in PBS with 0.09% (W/V) sodium azide. This antibody is prepared by Saturated Ammonium Sulfate (SAS) precipitation followed by dialysis against PBS.

Storage

Maintain refrigerated at 2-8°C for up to 2 weeks. For long term storage store at -20°C in small aliquots to prevent freeze-thaw cycles.

Precautions

ETV4 Antibody (C-term) is for research use only and not for use in diagnostic or therapeutic procedures.

ETV4 Antibody (C-term) - Protein Information

Name ETV4

Synonyms E1AF, PEA3

Function Transcriptional activator (PubMed:[19307308](#), PubMed:[31552090](#)). May play a role in keratinocyte differentiation (PubMed:[31552090](#)).

Cellular Location

Nucleus {ECO:0000255|PROSITE-ProRule:PRU00237}.

Tissue Location

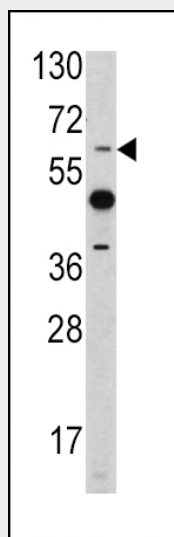
Expressed in keratinocytes.

ETV4 Antibody (C-term) - Protocols

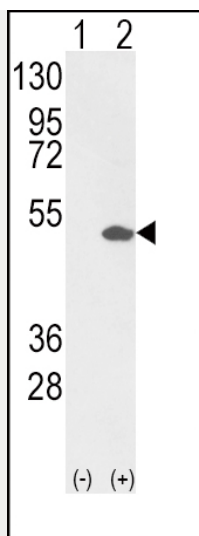
Provided below are standard protocols that you may find useful for product applications.

- [Western Blot](#)
- [Blocking Peptides](#)
- [Dot Blot](#)
- [Immunohistochemistry](#)
- [Immunofluorescence](#)
- [Immunoprecipitation](#)
- [Flow Cytometry](#)
- [Cell Culture](#)

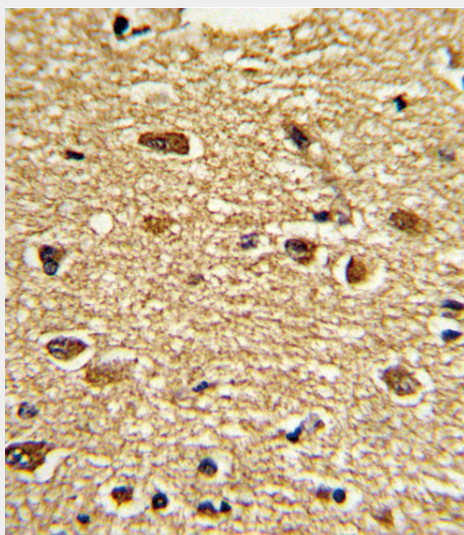
ETV4 Antibody (C-term) - Images



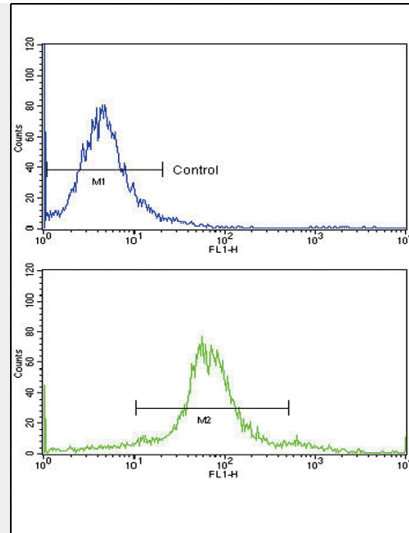
Western blot analysis of ETV4 antibody (C-term) (Cat. #AP6642b) in mouse heart tissue lysates (35ug/lane). ETV4 (arrow) was detected using the purified Pab.



Western blot analysis of ETV4 (arrow) using rabbit polyclonal ETV4 Antibody (C-term) (RB20008). 293 cell lysates (2 ug/lane) either nontransfected (Lane 1) or transiently transfected with the ETV4 gene (Lane 2) .



Formalin-fixed and paraffin-embedded human brain tissue reacted with ETV4 Antibody (C-term), which was peroxidase-conjugated to the secondary antibody, followed by DAB staining. This data demonstrates the use of this antibody for immunohistochemistry; clinical relevance has not been evaluated.



Flow cytometric analysis of wdr cells using ETV4 Antibody (C-term)(bottom histogram) compared to a negative control cell (top histogram) FITC-conjugated goat-anti-rabbit secondary antibodies were used for the analysis.

ETV4 Antibody (C-term) - Background

ETV4 is a transcriptional activator that binds to the enhancer of the adenovirus E1A gene; the core-binding sequence is 5'[AC]GGA[AT]GT-3'.

ETV4 Antibody (C-term) - References

Wei,Y., J. Biochem. 144 (4), 539-546 (2008)

ETV4 Antibody (C-term) - Citations

- [E3 ubiquitin ligase RFWD2 controls lung branching through protein-level regulation of ETV transcription factors.](#)