

HPX Antibody (Center)
Purified Rabbit Polyclonal Antibody (Pab)
Catalog # AP6653c**Specification**

HPX Antibody (Center) - Product Information

Application	WB, IHC-P, FC, IHC-P-Leica,E
Primary Accession	P02790
Reactivity	Human, Mouse, Rat
Host	Rabbit
Clonality	Polyclonal
Isotype	Rabbit IgG
Antigen Region	200-227

HPX Antibody (Center) - Additional Information**Gene ID** 3263**Other Names**

Hemopexin, Beta-1B-glycoprotein, HPX

Target/Specificity

This HPX antibody is generated from rabbits immunized with a KLH conjugated synthetic peptide between 200-227 amino acids from the Central region of human HPX.

Dilution

WB~~1:2000
IHC-P~~N/A
FC~~1:10~50
IHC-P-Leica~~1:500
E~~Use at an assay dependent concentration.

Format

Purified polyclonal antibody supplied in PBS with 0.09% (W/V) sodium azide. This antibody is purified through a protein A column, followed by peptide affinity purification.

Storage

Maintain refrigerated at 2-8°C for up to 2 weeks. For long term storage store at -20°C in small aliquots to prevent freeze-thaw cycles.

Precautions

HPX Antibody (Center) is for research use only and not for use in diagnostic or therapeutic procedures.

HPX Antibody (Center) - Protein Information**Name** HPX

Function Binds heme and transports it to the liver for breakdown and iron recovery, after which the free hemopexin returns to the circulation.

Cellular Location

Secreted.

Tissue Location

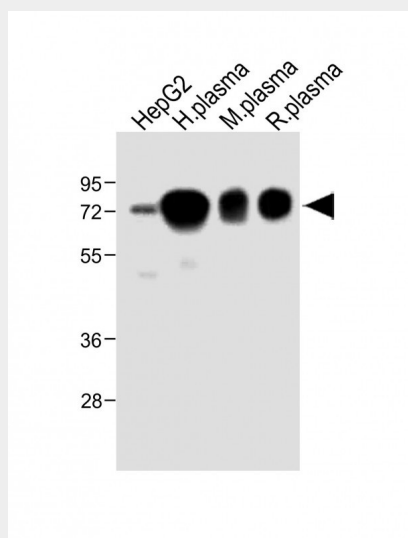
Expressed by the liver and secreted in plasma.

HPX Antibody (Center) - Protocols

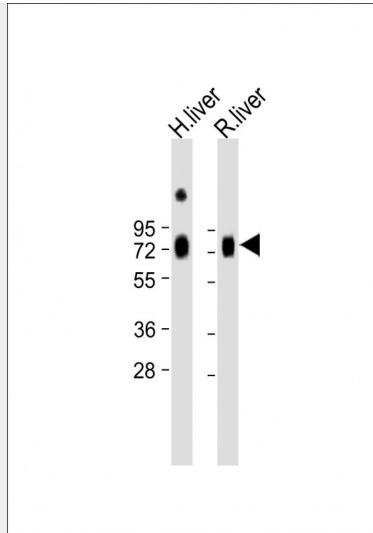
Provided below are standard protocols that you may find useful for product applications.

- [Western Blot](#)
- [Blocking Peptides](#)
- [Dot Blot](#)
- [Immunohistochemistry](#)
- [Immunofluorescence](#)
- [Immunoprecipitation](#)
- [Flow Cytometry](#)
- [Cell Culture](#)

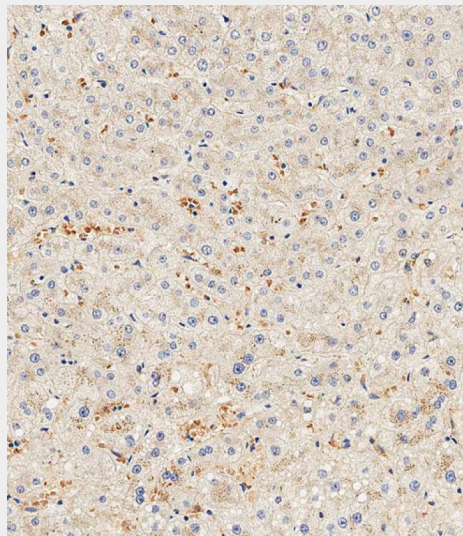
HPX Antibody (Center) - Images



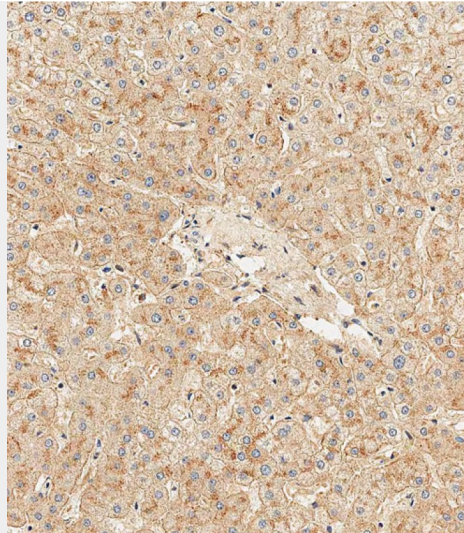
All lanes : Anti-HPX Antibody (Center) at 1:2000 dilution Lane 1: HepG2 whole cell lysate Lane 2: Human plasma lysate Lane 3: Mouse plasma lysate Lane 4: Rat plasma lysate Lysates/proteins at 20 µg per lane. Secondary Goat Anti-Rabbit IgG, (H+L), Peroxidase conjugated at 1/10000 dilution. Predicted band size : 52 kDa Blocking/Dilution buffer: 5% NFD/MTBST.



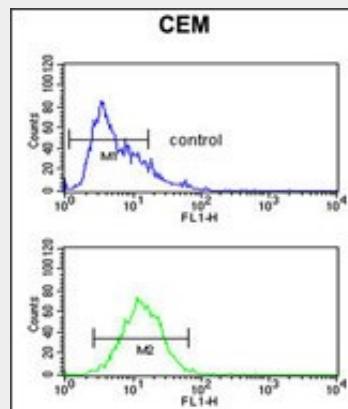
All lanes : Anti-HPX Antibody (Center) at 1:2000 dilution Lane 1: Human liver lysate Lane 2: Rat liver lysate Lysates/proteins at 20 μ g per lane. Secondary Goat Anti-Rabbit IgG, (H+L), Peroxidase conjugated at 1/10000 dilution. Predicted band size : 52 kDa Blocking/Dilution buffer: 5% NFDm/TBST.



Immunohistochemical analysis of paraffin-embedded Human liver tissue using AP6653c performed on the Leica® BOND RXm. Tissue was fixed with formaldehyde at room temperature, antigen retrieval was by heat mediation with a EDTA buffer (pH9. 0). Samples were incubated with primary antibody(1:500) for 1 hours at room temperature. A undiluted biotinylated CRF Anti-Polyvalent HRP Polymer antibody was used as the secondary antibody.



Immunohistochemical analysis of paraffin-embedded Human liver tissue using AP6653c performed on the Leica® BOND RXm. Tissue was fixed with formaldehyde at room temperature, antigen retrieval was by heat mediation with a EDTA buffer (pH9. 0). Samples were incubated with primary antibody(1:500) for 1 hours at room temperature. A undiluted biotinylated CRF Anti-Polyvalent HRP Polymer antibody was used as the secondary antibody.



HPX Antibody (Center) (Cat. #AP6653c) flow cytometric analysis of CEM cells (bottom histogram) compared to a negative control cell (top histogram).FITC-conjugated goat-anti-rabbit secondary antibodies were used for the analysis.

HPX Antibody (Center) - Background

HPX is a plasma glycoprotein that binds heme with high affinity. The protein is an acute phase protein that transports heme from the plasma to the liver and may be involved in protecting cells from oxidative stress.

HPX Antibody (Center) - References

Ascenzi,P., IUBMB Life 59 (11), 700-708 (2007)