

**MTBP Antibody (C-term)**  
**Purified Rabbit Polyclonal Antibody (Pab)**  
**Catalog # AP6657b****Specification**

---

**MTBP Antibody (C-term) - Product Information**

Application	FC, WB, IHC-P,E
Primary Accession	<a href="#">Q96DY7</a>
Other Accession	<a href="#">Q8BJS8</a>
Reactivity	Human
Predicted	Mouse
Host	Rabbit
Clonality	Polyclonal
Isotype	Rabbit IgG
Calculated MW	102193
Antigen Region	853-881

**MTBP Antibody (C-term) - Additional Information****Gene ID** 27085**Other Names**

Mdm2-binding protein, hMTBP, MTBP

**Target/Specificity**

This MTBP antibody is generated from rabbits immunized with a KLH conjugated synthetic peptide between 853-881 amino acids from the C-terminal region of human MTBP.

**Dilution**

FC~~1:10~50

WB~~1:1000

IHC-P~~1:50~100

E~~Use at an assay dependent concentration.

**Format**

Purified polyclonal antibody supplied in PBS with 0.09% (W/V) sodium azide. This antibody is prepared by Saturated Ammonium Sulfate (SAS) precipitation followed by dialysis against PBS.

**Storage**

Maintain refrigerated at 2-8°C for up to 2 weeks. For long term storage store at -20°C in small aliquots to prevent freeze-thaw cycles.

**Precautions**

MTBP Antibody (C-term) is for research use only and not for use in diagnostic or therapeutic procedures.

**MTBP Antibody (C-term) - Protein Information**

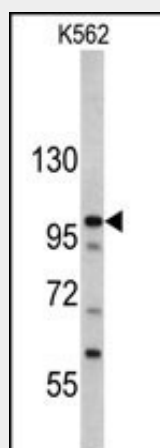
**Name** MTBP

**Function** Inhibits cell migration in vitro and suppresses the invasive behavior of tumor cells (By similarity). May play a role in MDM2- dependent p53/TP53 homeostasis in unstressed cells. Inhibits autoubiquitination of MDM2, thereby enhancing MDM2 stability. This promotes MDM2-mediated ubiquitination of p53/TP53 and its subsequent degradation.

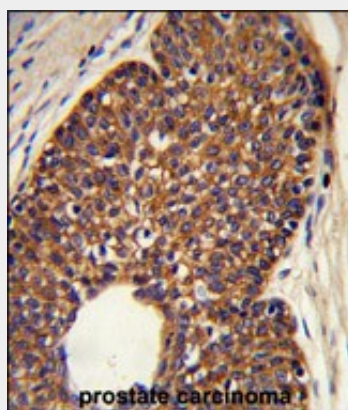
**MTBP Antibody (C-term) - Protocols**

Provided below are standard protocols that you may find useful for product applications.

- [Western Blot](#)
- [Blocking Peptides](#)
- [Dot Blot](#)
- [Immunohistochemistry](#)
- [Immunofluorescence](#)
- [Immunoprecipitation](#)
- [Flow Cytometry](#)
- [Cell Culture](#)

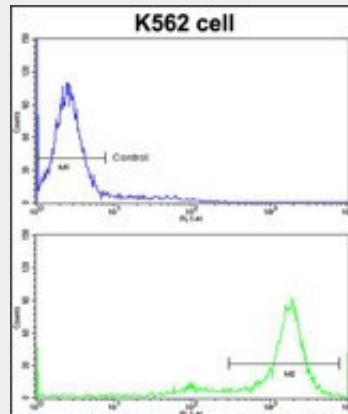
**MTBP Antibody (C-term) - Images**

Western blot analysis of MTBP antibody (C-term) (Cat. #AP6657b) in K562 cell line lysates (35ug/lane). MTBP (arrow) was detected using the purified Pab.



Formalin-fixed and paraffin-embedded human prostate carcinoma reacted with MTBP Antibody

(C-term), which was peroxidase-conjugated to the secondary antibody, followed by DAB staining. This data demonstrates the use of this antibody for immunohistochemistry; clinical relevance has not been evaluated.



Flow cytometric analysis of K562 cells using MTBP Antibody (C-term)(bottom histogram) compared to a negative control cell (top histogram) FITC-conjugated goat-anti-rabbit secondary antibodies were used for the analysis.

#### **MTBP Antibody (C-term) - Background**

MTBP inhibits cell migration in vitro and suppresses the invasive behavior of tumor cells. The protein may play a role in MDM2-dependent TP53/p53 homeostasis in unstressed cells. The protein inhibits autoubiquitination of MDM2, thereby enhancing MDM2 stability. This promotes MDM2-mediated ubiquitination of TP53/p53 and its subsequent degradation.

#### **MTBP Antibody (C-term) - References**

Brady,M., Mol. Cell. Biol. 25 (2), 545-553 (2005)  
 Boyd,M.T., J. Biol. Chem. 275 (41), 31883-31890 (2000)