

NKRF Antibody (Center)
Purified Rabbit Polyclonal Antibody (Pab)
Catalog # AP6660c**Specification**

NKRF Antibody (Center) - Product Information

Application	WB, IHC-P,E
Primary Accession	O15226
Other Accession	Q8BY02
Reactivity	Human
Predicted	Mouse
Host	Rabbit
Clonality	Polyclonal
Isotype	Rabbit IgG
Calculated MW	77673
Antigen Region	205-233

NKRF Antibody (Center) - Additional Information**Gene ID** 55922**Other Names**

NF-kappa-B-repressing factor, NFkB-repressing factor, Protein ITBA4, Transcription factor NRF, NKRF, ITBA4, NRF

Target/Specificity

This NKRF antibody is generated from rabbits immunized with a KLH conjugated synthetic peptide between 205-233 amino acids from the Central region of human NKRF.

DilutionWB~~1:1000
IHC-P~~1:50~100**Format**

Purified polyclonal antibody supplied in PBS with 0.09% (W/V) sodium azide. This antibody is prepared by Saturated Ammonium Sulfate (SAS) precipitation followed by dialysis against PBS.

Storage

Maintain refrigerated at 2-8°C for up to 2 weeks. For long term storage store at -20°C in small aliquots to prevent freeze-thaw cycles.

Precautions

NKRF Antibody (Center) is for research use only and not for use in diagnostic or therapeutic procedures.

NKRF Antibody (Center) - Protein Information**Name** NKRF {ECO:0000303|PubMed:32179686, ECO:0000312|HGNC:HGNC:19374}

Function Enhances the ATPase activity of DHX15 by acting like a brace that tethers mobile sections of DHX15 together, stabilizing a functional conformation with high RNA affinity of DHX15 (PubMed:[12381793](#)). Involved in the constitutive silencing of the interferon beta promoter, independently of the virus-induced signals, and in the inhibition of the basal and cytokine-induced iNOS promoter activity (PubMed:[12381793](#)). Also involved in the regulation of IL-8 transcription (PubMed:[12381793](#)). May also act as a DNA-binding transcription regulator: interacts with a specific negative regulatory element (NRE) 5'-AATTCCTCTGA-3' to mediate transcriptional repression of certain NK-kappa-B responsive genes (PubMed:[10562553](#)).

Cellular Location

Nucleus, nucleolus.

Tissue Location

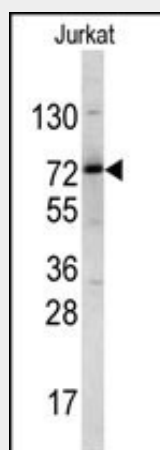
Widely and constitutively expressed (PubMed:10562553). Expressed at lower level in colon, peripheral blood lymphocytes, lung and kidney (PubMed:10562553)

NKRF Antibody (Center) - Protocols

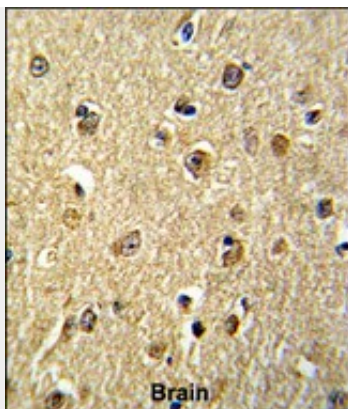
Provided below are standard protocols that you may find useful for product applications.

- [Western Blot](#)
- [Blocking Peptides](#)
- [Dot Blot](#)
- [Immunohistochemistry](#)
- [Immunofluorescence](#)
- [Immunoprecipitation](#)
- [Flow Cytometry](#)
- [Cell Culture](#)

NKRF Antibody (Center) - Images



Western blot analysis of NKRF antibody (Center) (Cat. #AP6660c) in Jurkat cell line lysates (35ug/lane). NKRF (arrow) was detected using the purified Pab.



Formalin-fixed and paraffin-embedded human brain reacted with NKRF Antibody (Center), which was peroxidase-conjugated to the secondary antibody, followed by DAB staining. This data demonstrates the use of this antibody for immunohistochemistry; clinical relevance has not been evaluated.

NKRF Antibody (Center) - Background

NKRF is a transcription factor that interacts with specific negative regulatory elements (NREs) to mediate transcriptional repression of certain NK-kappa-B-responsive genes. The protein localizes predominantly to the nucleolus with a small fraction found in the nucleoplasm and cytoplasm.

NKRF Antibody (Center) - References

Ho,S.C., J. Immunol. 183 (1), 411-420 (2009)
Glanz,A., Immunol. Cell Biol. 86 (7), 622-630 (2008)