

SCFD1 Antibody (C-term)
Purified Rabbit Polyclonal Antibody (Pab)
Catalog # AP6672b**Specification**

SCFD1 Antibody (C-term) - Product Information

| | |
|-------------------|---|
| Application | FC, WB, IHC-P,E |
| Primary Accession | Q8WVM8 |
| Other Accession | Q62991 , Q8BRF7 |
| Reactivity | Human |
| Predicted | Mouse, Rat |
| Host | Rabbit |
| Clonality | Polyclonal |
| Isotype | Rabbit IgG |
| Calculated MW | 72380 |
| Antigen Region | 543-572 |

SCFD1 Antibody (C-term) - Additional Information**Gene ID** 23256**Other Names**

Sec1 family domain-containing protein 1, SLY1 homolog, Sly1p, Syntaxin-binding protein 1-like 2, SCFD1, C14orf163, KIAA0917, STXBP1L2

Target/Specificity

This SCFD1 antibody is generated from rabbits immunized with a KLH conjugated synthetic peptide between 543-572 amino acids from the C-terminal region of human SCFD1.

Dilution

FC~~1:10~50

WB~~1:1000

IHC-P~~1:50~100

E~~Use at an assay dependent concentration.

Format

Purified polyclonal antibody supplied in PBS with 0.09% (W/V) sodium azide. This antibody is prepared by Saturated Ammonium Sulfate (SAS) precipitation followed by dialysis against PBS.

Storage

Maintain refrigerated at 2-8°C for up to 2 weeks. For long term storage store at -20°C in small aliquots to prevent freeze-thaw cycles.

Precautions

SCFD1 Antibody (C-term) is for research use only and not for use in diagnostic or therapeutic procedures.

SCFD1 Antibody (C-term) - Protein Information

Name SCFD1

Synonyms C14orf163, KIAA0917, STXBP1L2

Function Plays a role in SNARE-pin assembly and Golgi-to-ER retrograde transport via its interaction with COG4. Involved in vesicular transport between the endoplasmic reticulum and the Golgi (By similarity).

Cellular Location

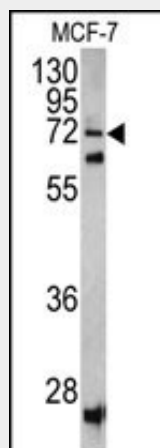
Cytoplasm. Endoplasmic reticulum membrane; Peripheral membrane protein Golgi apparatus, Golgi stack membrane; Peripheral membrane protein

SCFD1 Antibody (C-term) - Protocols

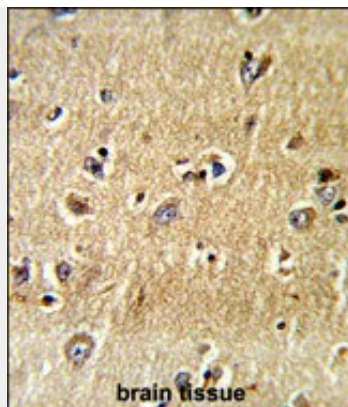
Provided below are standard protocols that you may find useful for product applications.

- [Western Blot](#)
- [Blocking Peptides](#)
- [Dot Blot](#)
- [Immunohistochemistry](#)
- [Immunofluorescence](#)
- [Immunoprecipitation](#)
- [Flow Cytometry](#)
- [Cell Culture](#)

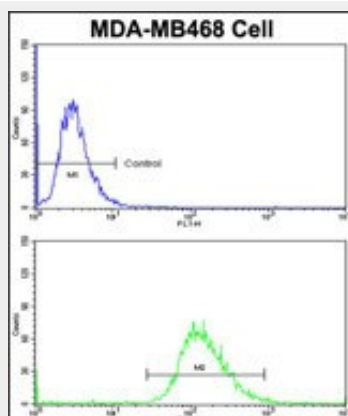
SCFD1 Antibody (C-term) - Images



Western blot analysis of SCFD1 antibody (C-term) (Cat. #AP6672b) in MCF-7 cell line lysates (35ug/lane). SCFD1 (arrow) was detected using the purified Pab.



Formalin-fixed and paraffin-embedded human brain tissue reacted with SCFD1 Antibody (C-term), which was peroxidase-conjugated to the secondary antibody, followed by DAB staining. This data demonstrates the use of this antibody for immunohistochemistry; clinical relevance has not been evaluated.



Flow cytometric analysis of MDA-MB468 cells using SCFD1 Antibody (C-term)(bottom histogram) compared to a negative control cell (top histogram)FITC-conjugated goat-anti-rabbit secondary antibodies were used for the analysis.

SCFD1 Antibody (C-term) - Background

SCFD1 is involved in vesicular transport between the endoplasmic reticulum and the Golgi.

SCFD1 Antibody (C-term) - References

Matsuo,N., J. Biol. Chem. 272 (26), 16438-16444 (1997)