

TROP2 Antibody (Center)
Purified Rabbit Polyclonal Antibody (Pab)
Catalog # AP6681c**Specification**

TROP2 Antibody (Center) - Product Information

Application	WB, IHC-P,E
Primary Accession	P09758
Reactivity	Human
Host	Rabbit
Clonality	Polyclonal
Isotype	Rabbit IgG
Calculated MW	35709
Antigen Region	162-190

TROP2 Antibody (Center) - Additional Information**Gene ID** 4070**Other Names**

Tumor-associated calcium signal transducer 2, Cell surface glycoprotein Trop-2, Membrane component chromosome 1 surface marker 1, Pancreatic carcinoma marker protein GA733-1, TACSTD2, GA733-1, M1S1, TROP2

Target/Specificity

This TROP2 antibody is generated from rabbits immunized with a KLH conjugated synthetic peptide between 162-190 amino acids from the Central region of human TROP2.

Dilution

WB~~1:1000

IHC-P~~1:50~100

E~~Use at an assay dependent concentration.

Format

Purified polyclonal antibody supplied in PBS with 0.09% (W/V) sodium azide. This antibody is prepared by Saturated Ammonium Sulfate (SAS) precipitation followed by dialysis against PBS.

Storage

Maintain refrigerated at 2-8°C for up to 2 weeks. For long term storage store at -20°C in small aliquots to prevent freeze-thaw cycles.

Precautions

TROP2 Antibody (Center) is for research use only and not for use in diagnostic or therapeutic procedures.

TROP2 Antibody (Center) - Protein Information**Name** TACSTD2

Synonyms GA733-1, M1S1, TROP2

Function May function as a growth factor receptor.

Cellular Location

Membrane; Single-pass type I membrane protein.

Tissue Location

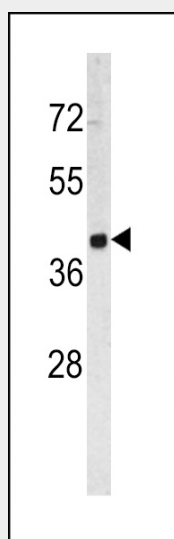
Placenta, pancreatic carcinoma cell lines.

TROP2 Antibody (Center) - Protocols

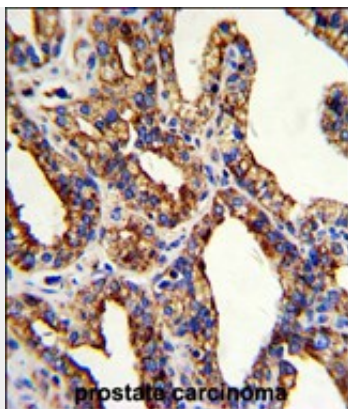
Provided below are standard protocols that you may find useful for product applications.

- [Western Blot](#)
- [Blocking Peptides](#)
- [Dot Blot](#)
- [Immunohistochemistry](#)
- [Immunofluorescence](#)
- [Immunoprecipitation](#)
- [Flow Cytometry](#)
- [Cell Culture](#)

TROP2 Antibody (Center) - Images



Western blot analysis of TROP2 antibody (Center) (Cat. #AP6681c) in HL60 cell line lysates (35ug/lane). TROP2 (arrow) was detected using the purified Pab.



Formalin-fixed and paraffin-embedded human prostate carcinoma with TROP2 Antibody (Center), which was peroxidase-conjugated to the secondary antibody, followed by DAB staining. This data demonstrates the use of this antibody for immunohistochemistry; clinical relevance has not been evaluated.

TROP2 Antibody (Center) - Background

TROP2 is a carcinoma-associated antigen defined by the monoclonal antibody GA733. This antigen is a member of a family including at least two type I membrane proteins. It transduces an intracellular calcium signal and acts as a cell surface receptor. Mutations of its gene result in gelatinous drop-like corneal dystrophy, an autosomal recessive disorder characterized by severe corneal amyloidosis leading to blindness.

TROP2 Antibody (Center) - References

Goldstein,A.S., Proc. Natl. Acad. Sci. U.S.A. 105 (52), 20882-20887 (2008)