

TTR Antibody (Center)
Purified Rabbit Polyclonal Antibody (Pab)
Catalog # AP6698C**Specification**

TTR Antibody (Center) - Product Information

| | |
|-------------------|------------------------|
| Application | FC, IHC-P, WB,E |
| Primary Accession | P02766 |
| Other Accession | O46375 |
| Reactivity | Human |
| Predicted | Bovine |
| Host | Rabbit |
| Clonality | Polyclonal |
| Isotype | Rabbit IgG |
| Calculated MW | 15887 |
| Antigen Region | 47-74 |

TTR Antibody (Center) - Additional Information**Gene ID** 7276**Other Names**

Transthyretin, ATTR, Prealbumin, TBPA, TTR, PALB

Target/Specificity

This TTR antibody is generated from rabbits immunized with a KLH conjugated synthetic peptide between 47-74 amino acids from the Central region of human TTR.

Dilution

FC~~1:10~50

IHC-P~~1:10~50

WB~~1:1000

E~~Use at an assay dependent concentration.

Format

Purified polyclonal antibody supplied in PBS with 0.09% (W/V) sodium azide. This antibody is prepared by Saturated Ammonium Sulfate (SAS) precipitation followed by dialysis against PBS.

Storage

Maintain refrigerated at 2-8°C for up to 2 weeks. For long term storage store at -20°C in small aliquots to prevent freeze-thaw cycles.

Precautions

TTR Antibody (Center) is for research use only and not for use in diagnostic or therapeutic procedures.

TTR Antibody (Center) - Protein Information

Name TTR

Synonyms PALB

Function Thyroid hormone-binding protein. Probably transports thyroxine from the bloodstream to the brain.

Cellular Location
Secreted. Cytoplasm.

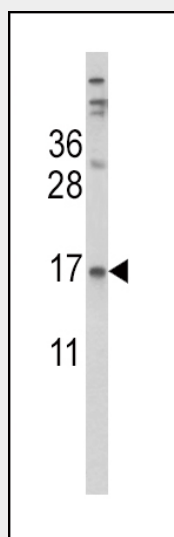
Tissue Location
Detected in serum and cerebrospinal fluid (at protein level). Highly expressed in choroid plexus epithelial cells Detected in retina pigment epithelium and liver

TTR Antibody (Center) - Protocols

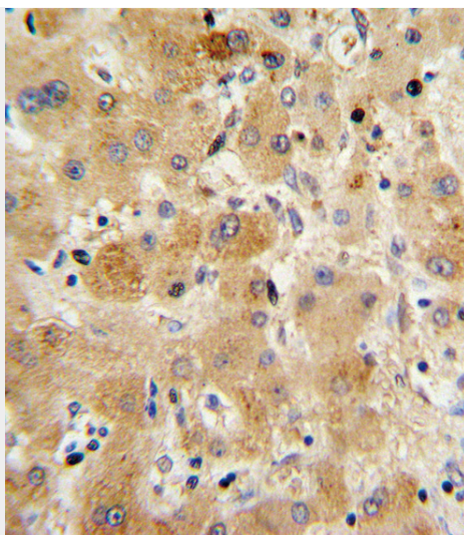
Provided below are standard protocols that you may find useful for product applications.

- [Western Blot](#)
- [Blocking Peptides](#)
- [Dot Blot](#)
- [Immunohistochemistry](#)
- [Immunofluorescence](#)
- [Immunoprecipitation](#)
- [Flow Cytometry](#)
- [Cell Culture](#)

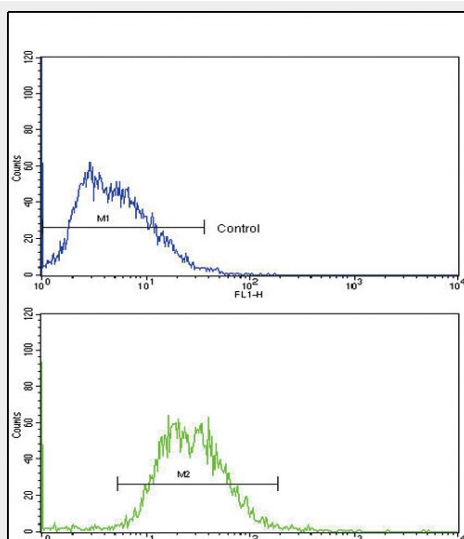
TTR Antibody (Center) - Images



Western blot analysis of TTR Antibody (Center) (Cat. #AP6698c) in HepG2 cell line lysates (35ug/lane). TTR (arrow) was detected using the purified Pab.



Formalin-fixed and paraffin-embedded human hepatocarcinoma with TTR Antibody (Center), which was peroxidase-conjugated to the secondary antibody, followed by DAB staining. This data demonstrates the use of this antibody for immunohistochemistry; clinical relevance has not been evaluated.



TTR Antibody (Center) (Cat.#AP6698c) flow cytometry analysis of HepG2 cells (bottom histogram) compared to a negative control cell (top histogram). FITC-conjugated goat-anti-rabbit secondary antibodies were used for the analysis.

TTR Antibody (Center) - Background

Transthyretin, one of the three prealbumins including alpha-1-antitrypsin, transthyretin and orosomucoid. Transthyretin is a carrier protein; it transports thyroid hormones in the plasma and cerebrospinal fluid, and also transports retinol (vitamin A) in the plasma. The protein consists of a tetramer of identical subunits. More than 80 different mutations in this gene have been reported; most mutations are related to amyloid deposition, affecting predominantly peripheral nerve and/or the heart, and a small portion of the gene mutations is non-amyloidogenic. The diseases caused by mutations include amyloidotic polyneuropathy, euthyroid hyperthyroxinaemia, amyloidotic vitreous opacities, cardiomyopathy, oculoleptomeningeal amyloidosis, meningocerebrovascular amyloidosis, carpal tunnel syndrome, etc.

TTR Antibody (Center) - References

Lee,K.W., Biochem. Biophys. Res. Commun. 388 (2), 256-260 (2009)