

KRT10 Antibody (N-term)
Affinity Purified Rabbit Polyclonal Antibody (Pab)
Catalog # AP6704a**Specification**

KRT10 Antibody (N-term) - Product Information

Application	FC, IHC-P, WB,E
Primary Accession	P13645
Other Accession	P02535
Reactivity	Human
Predicted	Mouse
Host	Rabbit
Clonality	Polyclonal
Isotype	Rabbit IgG
Calculated MW	58827
Antigen Region	150-179

KRT10 Antibody (N-term) - Additional Information**Gene ID** 3858**Other Names**

Keratin, type I cytoskeletal 10, Cytokeratin-10, CK-10, Keratin-10, K10, KRT10, KPP

Target/Specificity

This KRT10 antibody is generated from rabbits immunized with a KLH conjugated synthetic peptide between 150-179 amino acids from the N-terminal region of human KRT10.

Dilution

FC~~1:10~50

IHC-P~~1:50~100

WB~~1:2000

E~~Use at an assay dependent concentration.

Format

Purified polyclonal antibody supplied in PBS with 0.09% (W/V) sodium azide. This antibody is purified through a protein A column, followed by peptide affinity purification.

Storage

Maintain refrigerated at 2-8°C for up to 2 weeks. For long term storage store at -20°C in small aliquots to prevent freeze-thaw cycles.

Precautions

KRT10 Antibody (N-term) is for research use only and not for use in diagnostic or therapeutic procedures.

KRT10 Antibody (N-term) - Protein Information

Name KRT10

Synonyms KPP

Function Plays a role in the establishment of the epidermal barrier on plantar skin (By similarity). Involved in the maintenance of cell layer development and keratin filament bundles in suprabasal cells of the epithelium (By similarity).

Cellular Location

Secreted, extracellular space. Cell surface. Cytoplasm

Tissue Location

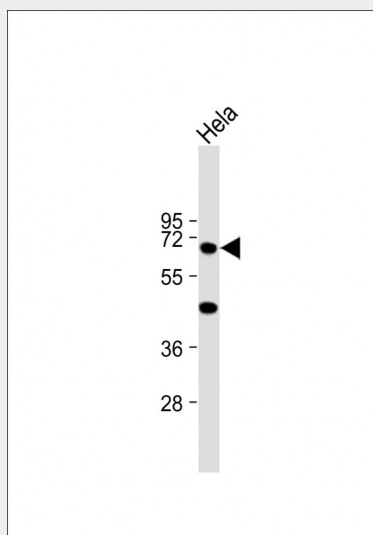
Seen in all suprabasal cell layers including stratum corneum. Expressed on the surface of lung cell lines (PubMed:19627498). Localized on the surface of desquamated nasal epithelial cells (at protein level) (PubMed:12427098)

KRT10 Antibody (N-term) - Protocols

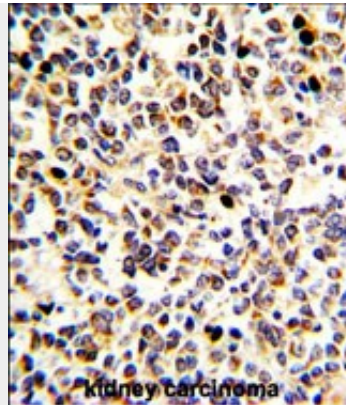
Provided below are standard protocols that you may find useful for product applications.

- [Western Blot](#)
- [Blocking Peptides](#)
- [Dot Blot](#)
- [Immunohistochemistry](#)
- [Immunofluorescence](#)
- [Immunoprecipitation](#)
- [Flow Cytometry](#)
- [Cell Culture](#)

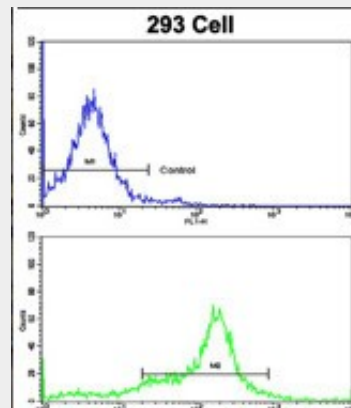
KRT10 Antibody (N-term) - Images



Anti-KRT10 Antibody (N-term) at 1:2000 dilution + HeLa whole cell lysate Lysates/proteins at 20 µg per lane. Secondary Goat Anti-Rabbit IgG, (H+L), Peroxidase conjugated at 1/10000 dilution. Predicted band size : 59 kDa Blocking/Dilution buffer: 5% NFDm/TBST.



Formalin-fixed and paraffin-embedded human kidney carcinoma with KRT10 Antibody (N-term), which was peroxidase-conjugated to the secondary antibody, followed by DAB staining. This data demonstrates the use of this antibody for immunohistochemistry; clinical relevance has not been evaluated.



Flow cytometric analysis of 293 cells using KRT10 Antibody (N-term)(bottom histogram) compared to a negative control cell (top histogram). FITC-conjugated goat-anti-rabbit secondary antibodies were used for the analysis.

KRT10 Antibody (N-term) - Background

KRT10 is a member of the type I (acidic) cytokeratin family, which belongs to the superfamily of intermediate filament (IF) proteins. Keratins are heteropolymeric structural proteins which form the intermediate filament. These filaments, along with actin microfilaments and microtubules, compose the cytoskeleton of epithelial cells. Mutations in its gene are associated with epidermolytic hyperkeratosis.

KRT10 Antibody (N-term) - References

Morais,P., Eur J Dermatol 19 (4), 333-336 (2009)
Barcelos,A.C., J. Cutan. Pathol. 36 (6), 647-654 (2009)