

**LRG1 Antibody (N-term)**  
**Purified Rabbit Polyclonal Antibody (Pab)**  
**Catalog # AP6705a****Specification**

---

**LRG1 Antibody (N-term) - Product Information**

Application	FC, WB, IHC-P,E
Primary Accession	<a href="#">P02750</a>
Reactivity	Human
Host	Rabbit
Clonality	Polyclonal
Isotype	Rabbit IgG
Calculated MW	38178
Antigen Region	86-114

**LRG1 Antibody (N-term) - Additional Information****Gene ID** 116844**Other Names**

Leucine-rich alpha-2-glycoprotein, LRG, LRG1, LRG

**Target/Specificity**

This LRG1 antibody is generated from rabbits immunized with a KLH conjugated synthetic peptide between 86-114 amino acids from the N-terminal region of human LRG1.

**Dilution**

FC~~1:10~50

WB~~1:1000

IHC-P~~1:50~100

E~~Use at an assay dependent concentration.

**Format**

Purified polyclonal antibody supplied in PBS with 0.09% (W/V) sodium azide. This antibody is prepared by Saturated Ammonium Sulfate (SAS) precipitation followed by dialysis against PBS.

**Storage**

Maintain refrigerated at 2-8°C for up to 2 weeks. For long term storage store at -20°C in small aliquots to prevent freeze-thaw cycles.

**Precautions**

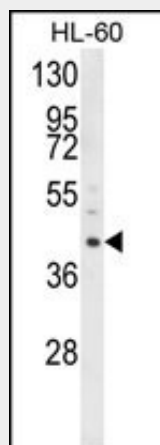
LRG1 Antibody (N-term) is for research use only and not for use in diagnostic or therapeutic procedures.

**LRG1 Antibody (N-term) - Protein Information****Name** LRG1

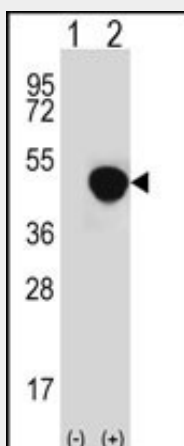
**Synonyms** LRG**Cellular Location**  
Secreted.**Tissue Location**  
Plasma.**LRG1 Antibody (N-term) - Protocols**

Provided below are standard protocols that you may find useful for product applications.

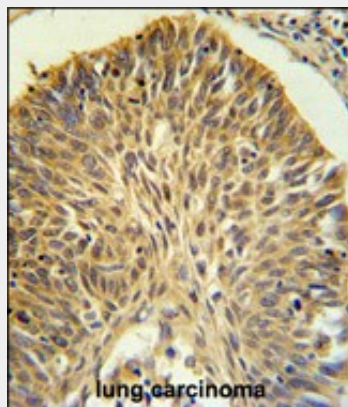
- [Western Blot](#)
- [Blocking Peptides](#)
- [Dot Blot](#)
- [Immunohistochemistry](#)
- [Immunofluorescence](#)
- [Immunoprecipitation](#)
- [Flow Cytometry](#)
- [Cell Culture](#)

**LRG1 Antibody (N-term) - Images**

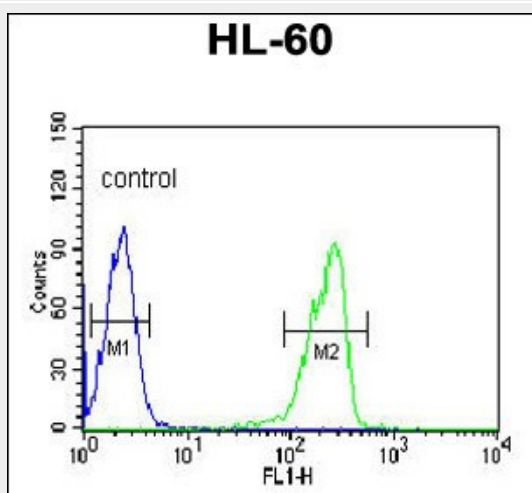
Western blot analysis of LRG1 Antibody (N-term) (Cat. #AP6705a) in HL-60 cell line lysates (35ug/lane). LRG1 (arrow) was detected using the purified Pab.



Western blot analysis of LRG1 (arrow) using rabbit polyclonal LRG1 Antibody (N-term) (Cat. #AP6705a). 293 cell lysates (2 ug/lane) either nontransfected (Lane 1) or transiently transfected (Lane 2) with the LRG1 gene.



LRG1 Antibody (N-term) (Cat. #AP6705a) IHC analysis in formalin fixed and paraffin embedded lung carcinoma followed by peroxidase conjugation of the secondary antibody and DAB staining. This data demonstrates the use of the LRG1 Antibody (N-term) for immunohistochemistry. Clinical relevance has not been evaluated.



LRG1 Antibody (N-term) (Cat. #AP6705a) flow cytometric analysis of HL-60 cells (right histogram) compared to a negative control cell (left histogram). FITC-conjugated goat-anti-rabbit secondary antibodies were used for the analysis.

### **LRG1 Antibody (N-term) - Background**

The leucine-rich repeat (LRR) family of proteins, including LRG1, have been shown to be involved in protein-protein interaction, signal transduction, and cell adhesion and development. LRG1 is expressed during granulocyte differentiation.

### **LRG1 Antibody (N-term) - References**

Shirai, R., Biochem. Biophys. Res. Commun. 382 (4), 776-779 (2009)  
Gillott, D.J., Fertil. Steril. 90 (3), 761-768 (2008)