

**LRG1 Antibody (Center)**  
**Purified Rabbit Polyclonal Antibody (Pab)**  
**Catalog # AP6705c****Specification**

---

**LRG1 Antibody (Center) - Product Information**

Application	WB, FC, IHC-P,E
Primary Accession	<a href="#">P02750</a>
Reactivity	Human
Host	Rabbit
Clonality	Polyclonal
Isotype	Rabbit IgG
Calculated MW	38178
Antigen Region	194-223

**LRG1 Antibody (Center) - Additional Information****Gene ID** 116844**Other Names**

Leucine-rich alpha-2-glycoprotein, LRG, LRG1, LRG

**Target/Specificity**

This LRG1 antibody is generated from rabbits immunized with a KLH conjugated synthetic peptide between 194-223 amino acids from the Central region of human LRG1.

**Dilution**

WB~~1:1000

FC~~1:10~50

IHC-P~~1:50~100

E~~Use at an assay dependent concentration.

**Format**

Purified polyclonal antibody supplied in PBS with 0.09% (W/V) sodium azide. This antibody is prepared by Saturated Ammonium Sulfate (SAS) precipitation followed by dialysis against PBS.

**Storage**

Maintain refrigerated at 2-8°C for up to 2 weeks. For long term storage store at -20°C in small aliquots to prevent freeze-thaw cycles.

**Precautions**

LRG1 Antibody (Center) is for research use only and not for use in diagnostic or therapeutic procedures.

**LRG1 Antibody (Center) - Protein Information****Name** LRG1

**Synonyms** LRG**Cellular Location**

Secreted.

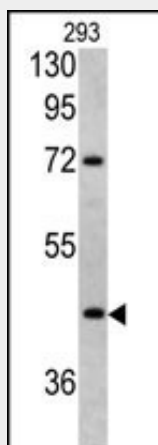
**Tissue Location**

Plasma.

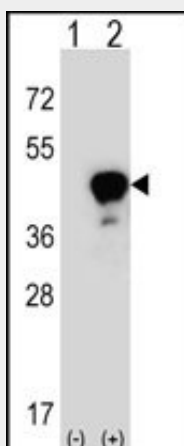
**LRG1 Antibody (Center) - Protocols**

Provided below are standard protocols that you may find useful for product applications.

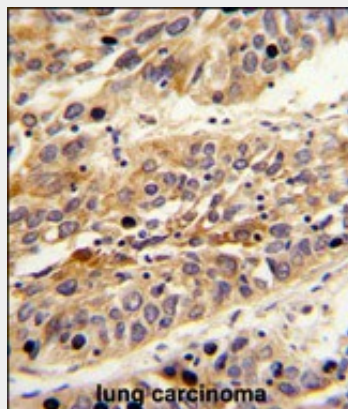
- [Western Blot](#)
- [Blocking Peptides](#)
- [Dot Blot](#)
- [Immunohistochemistry](#)
- [Immunofluorescence](#)
- [Immunoprecipitation](#)
- [Flow Cytometry](#)
- [Cell Culture](#)

**LRG1 Antibody (Center) - Images**

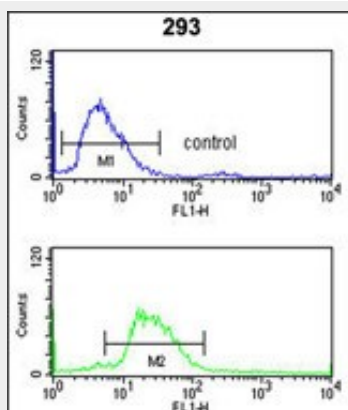
Western blot analysis of LRG1 antibody (Center) (Cat. #AP6705c) in 293 cell line lysates (35ug/lane). LRG1 (arrow) was detected using the purified Pab.



Western blot analysis of LRG1 (arrow) using rabbit polyclonal LRG1 Antibody (Center) (Cat. #AP6705c). 293 cell lysates (2 ug/lane) either nontransfected (Lane 1) or transiently transfected (Lane 2) with the LRG1 gene.



Formalin-fixed and paraffin-embedded human lung carcinoma reacted with LRG1 Antibody (Center), which was peroxidase-conjugated to the secondary antibody, followed by DAB staining. This data demonstrates the use of this antibody for immunohistochemistry; clinical relevance has not been evaluated.



LRG1 Antibody (Center)(Cat. #AP6705c) flow cytometry analysis of 293 cells (bottom histogram) compared to a negative control cell (top histogram).FITC-conjugated goat-anti-rabbit secondary antibodies were used for the analysis.

### LRG1 Antibody (Center) - Background

The leucine-rich repeat (LRR) family of proteins, including LRG1, have been shown to be involved in protein-protein interaction, signal transduction, and cell adhesion and development. LRG1 is expressed during granulocyte differentiation.

### LRG1 Antibody (Center) - References

Shirai,R., Biochem. Biophys. Res. Commun. 382 (4), 776-779 (2009)  
Gillott,D.J., Fertil. Steril. 90 (3), 761-768 (2008)