

Hrs (phospho Tyr216) Polyclonal Antibody
Catalog # AP67064**Specification**

Hrs (phospho Tyr216) Polyclonal Antibody - Product Information

Application	WB
Primary Accession	O14964
Reactivity	Human, Mouse, Rat
Host	Rabbit
Clonality	Polyclonal

Hrs (phospho Tyr216) Polyclonal Antibody - Additional Information**Gene ID** 9146**Other Names**

HGS; HRS; Hepatocyte growth factor-regulated tyrosine kinase substrate; Hrs; Protein pp110

Dilution

WB~~Western Blot: 1/500 - 1/2000. ELISA: 1/10000. Not yet tested in other applications.

Format

Liquid in PBS containing 50% glycerol, 0.5% BSA and 0.09% (W/V) sodium azide.

Storage Conditions

-20°C

Hrs (phospho Tyr216) Polyclonal Antibody - Protein Information**Name** HGS**Synonyms** HRS**Function**

Involved in intracellular signal transduction mediated by cytokines and growth factors. When associated with STAM, it suppresses DNA signaling upon stimulation by IL-2 and GM-CSF. Could be a direct effector of PI3-kinase in vesicular pathway via early endosomes and may regulate trafficking to early and late endosomes by recruiting clathrin. May concentrate ubiquitinated receptors within clathrin-coated regions. Involved in down-regulation of receptor tyrosine kinase via multivesicular body (MVBs) when complexed with STAM (ESCRT-0 complex). The ESCRT-0 complex binds ubiquitin and acts as a sorting machinery that recognizes ubiquitinated receptors and transfers them to further sequential lysosomal sorting/trafficking processes. May contribute to the efficient recruitment of SMADs to the activin receptor complex. Involved in receptor recycling via its association with the CART complex, a multiprotein complex required for efficient transferrin receptor recycling but not for EGFR degradation.

Cellular Location

Cytoplasm {ECO:0000250|UniProtKB:Q9JJ50}. Early endosome membrane; Peripheral membrane

protein; Cytoplasmic side Endosome, multivesicular body membrane
{ECO:0000250|UniProtKB:Q9JJ50}; Peripheral membrane protein
{ECO:0000250|UniProtKB:Q9JJ50} Note=Colocalizes with UBQLN1 in ubiquitin-rich cytoplasmic aggregates that are not endocytic compartments.

Tissue Location

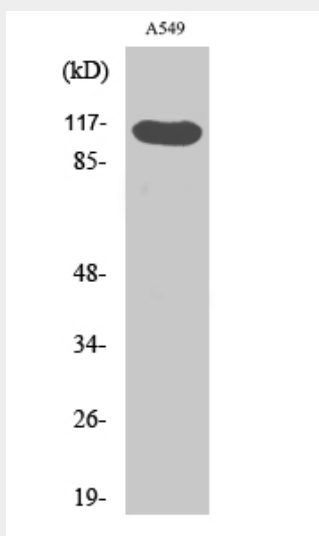
Ubiquitous expression in adult and fetal tissues with higher expression in testis and peripheral blood leukocytes

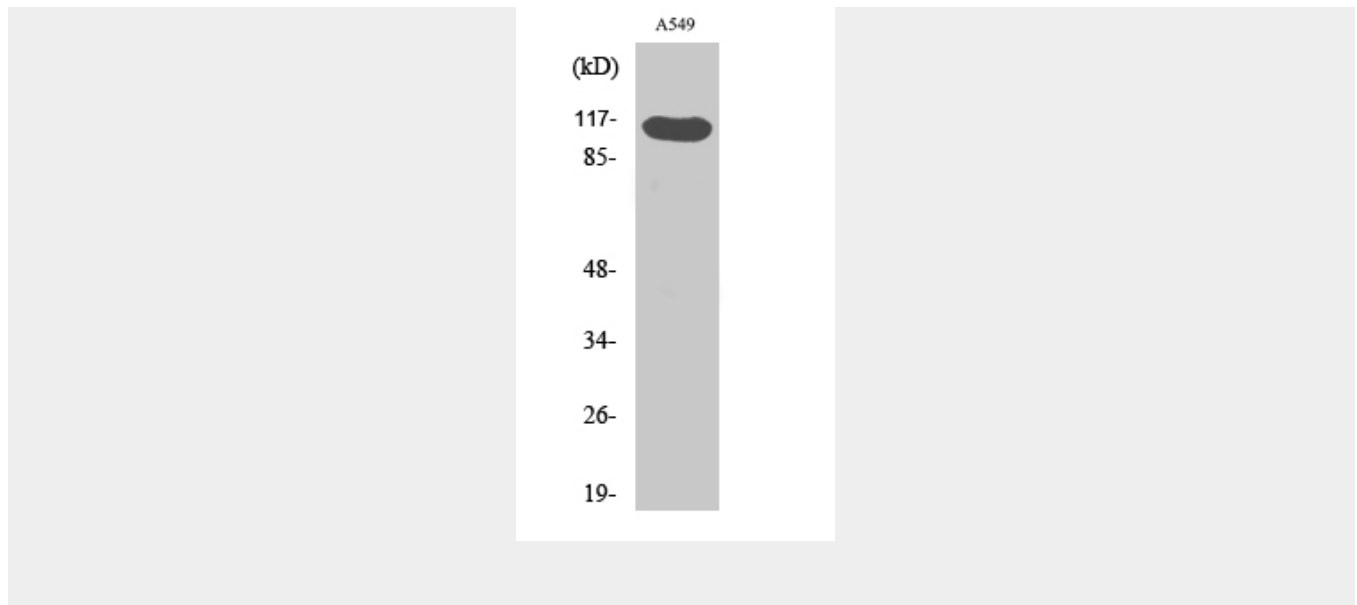
Hrs (phospho Tyr216) Polyclonal Antibody - Protocols

Provided below are standard protocols that you may find useful for product applications.

- [Western Blot](#)
- [Blocking Peptides](#)
- [Dot Blot](#)
- [Immunohistochemistry](#)
- [Immunofluorescence](#)
- [Immunoprecipitation](#)
- [Flow Cytometry](#)
- [Cell Culture](#)

Hrs (phospho Tyr216) Polyclonal Antibody - Images





Hrs (phospho Tyr216) Polyclonal Antibody - Background

Involved in intracellular signal transduction mediated by cytokines and growth factors. When associated with STAM, it suppresses DNA signaling upon stimulation by IL-2 and GM-CSF. Could be a direct effector of PI3-kinase in vesicular pathway via early endosomes and may regulate trafficking to early and late endosomes by recruiting clathrin. May concentrate ubiquitinated receptors within clathrin-coated regions. Involved in down- regulation of receptor tyrosine kinase via multivesicular body (MVBs) when complexed with STAM (ESCRT-0 complex). The ESCRT-0 complex binds ubiquitin and acts as sorting machinery that recognizes ubiquitinated receptors and transfers them to further sequential lysosomal sorting/trafficking processes. May contribute to the efficient recruitment of SMADs to the activin receptor complex. Involved in receptor recycling via its association with the CART complex, a multiprotein complex required for efficient transferrin receptor recycling but not for EGFR degradation.