

KRT13 Antibody (N-term)
Purified Rabbit Polyclonal Antibody (Pab)
Catalog # AP6707a**Specification**

KRT13 Antibody (N-term) - Product Information

Application	FC, IHC-P, WB,E
Primary Accession	P13646
Other Accession	P08779 , P02533
Reactivity	Human
Host	Rabbit
Clonality	Polyclonal
Isotype	Rabbit IgG
Antigen Region	106-138

KRT13 Antibody (N-term) - Additional Information**Gene ID** 3860**Other Names**

Keratin, type I cytoskeletal 13, Cytokeratin-13, CK-13, Keratin-13, K13, KRT13

Target/Specificity

This KRT13 antibody is generated from rabbits immunized with a KLH conjugated synthetic peptide between 106-138 amino acids from the N-terminal region of human KRT13.

Dilution

FC~~1:10~50

IHC-P~~1:50~100

WB~~1:1000

E~~Use at an assay dependent concentration.

Format

Purified polyclonal antibody supplied in PBS with 0.09% (W/V) sodium azide. This antibody is prepared by Saturated Ammonium Sulfate (SAS) precipitation followed by dialysis against PBS.

Storage

Maintain refrigerated at 2-8°C for up to 2 weeks. For long term storage store at -20°C in small aliquots to prevent freeze-thaw cycles.

Precautions

KRT13 Antibody (N-term) is for research use only and not for use in diagnostic or therapeutic procedures.

KRT13 Antibody (N-term) - Protein Information**Name** KRT13

Function Type 1 keratin (Probable). Maintains postnatal tongue mucosal cell homeostasis and tissue organization in response to mechanical stress, potentially via regulation of the G1/S phase cyclins CCNE1 and CCNE2 (By similarity).

Tissue Location

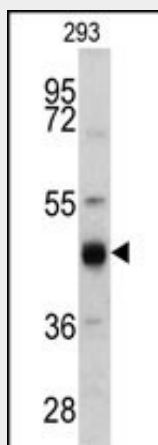
Expressed in some epidermal sweat gland ducts (at protein level) and in exocervix, esophagus and placenta

KRT13 Antibody (N-term) - Protocols

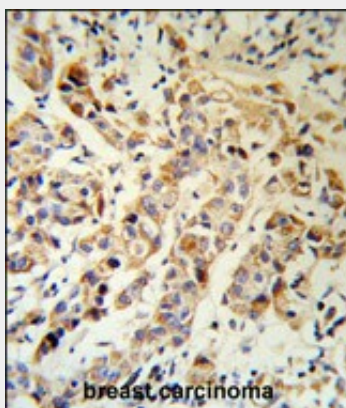
Provided below are standard protocols that you may find useful for product applications.

- [Western Blot](#)
- [Blocking Peptides](#)
- [Dot Blot](#)
- [Immunohistochemistry](#)
- [Immunofluorescence](#)
- [Immunoprecipitation](#)
- [Flow Cytometry](#)
- [Cell Culture](#)

KRT13 Antibody (N-term) - Images

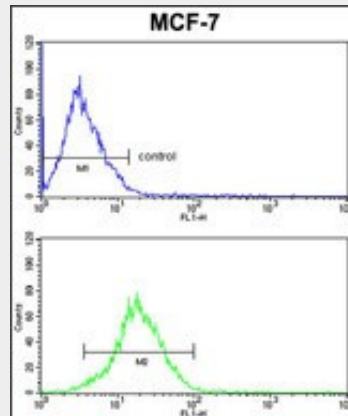


Western blot analysis of KRT13 antibody (N-term) (Cat. #AP6707a) in 293 cell line lysates (35ug/lane). KRT13 (arrow) was detected using the purified Pab.



KRT13 Antibody (N-term) (RB18903) IHC analysis in formalin fixed and paraffin embedded human

breast carcinoma followed by peroxidase conjugation of the secondary antibody and DAB staining. This data demonstrates the use of the KRT13 Antibody (N-term) for immunohistochemistry. Clinical relevance has not been evaluated.



KRT13 Antibody (N-term) (Cat.#AP6707a) FC analysis of MCF-7 cells (bottom histogram) compared to a negative control cell (top histogram). FITC-conjugated goat-anti-rabbit secondary antibodies were used for the analysis.

KRT13 Antibody (N-term) - Background

KRT13 is a member of the keratin gene family. The keratins are intermediate filament proteins responsible for the structural integrity of epithelial cells and are subdivided into cytokeratins and hair keratins. Most of the type I cytokeratins consist of acidic proteins which are arranged in pairs of heterotypic keratin chains. This type I cytokeratin is paired with keratin 4 and expressed in the suprabasal layers of non-cornified stratified epithelia. Mutations in its gene and keratin 4 have been associated with the autosomal dominant disorder White Sponge Nevus.

KRT13 Antibody (N-term) - References

Sheng,S., Mol. Cell. Endocrinol. 296 (1-2), 1-9 (2008)