

**ITIH2 Antibody (C-term)**  
**Purified Rabbit Polyclonal Antibody (Pab)**  
**Catalog # AP6712b****Specification**

---

**ITIH2 Antibody (C-term) - Product Information**

Application	FC, IHC-P, WB,E
Primary Accession	<a href="#">P19823</a>
Other Accession	<a href="#">O02668</a>
Reactivity	Human
Predicted	Pig
Host	Rabbit
Clonality	Polyclonal
Isotype	Rabbit IgG
Calculated MW	106463
Antigen Region	858-886

**ITIH2 Antibody (C-term) - Additional Information****Gene ID** 3698**Other Names**

Inter-alpha-trypsin inhibitor heavy chain H2, ITI heavy chain H2, ITI-HC2, Inter-alpha-inhibitor heavy chain 2, Inter-alpha-trypsin inhibitor complex component II, Serum-derived hyaluronan-associated protein, SHAP, ITIH2, IGHEP2

**Target/Specificity**

This ITIH2 antibody is generated from rabbits immunized with a KLH conjugated synthetic peptide between 858-886 amino acids from the C-terminal region of human ITIH2.

**Dilution**

FC~~1:10~50

IHC-P~~1:50~100

WB~~1:1000

E~~Use at an assay dependent concentration.

**Format**

Purified polyclonal antibody supplied in PBS with 0.09% (W/V) sodium azide. This antibody is prepared by Saturated Ammonium Sulfate (SAS) precipitation followed by dialysis against PBS.

**Storage**

Maintain refrigerated at 2-8°C for up to 2 weeks. For long term storage store at -20°C in small aliquots to prevent freeze-thaw cycles.

**Precautions**

ITIH2 Antibody (C-term) is for research use only and not for use in diagnostic or therapeutic procedures.

**ITIH2 Antibody (C-term) - Protein Information**

**Name** ITIH2

**Synonyms** IGHEP2

**Function** May act as a carrier of hyaluronan in serum or as a binding protein between hyaluronan and other matrix protein, including those on cell surfaces in tissues to regulate the localization, synthesis and degradation of hyaluronan which are essential to cells undergoing biological processes.

**Cellular Location**

Secreted.

**Tissue Location**

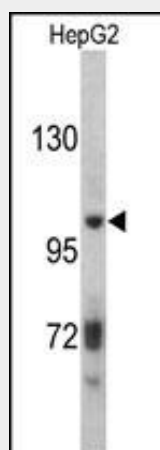
Plasma.

### ITIH2 Antibody (C-term) - Protocols

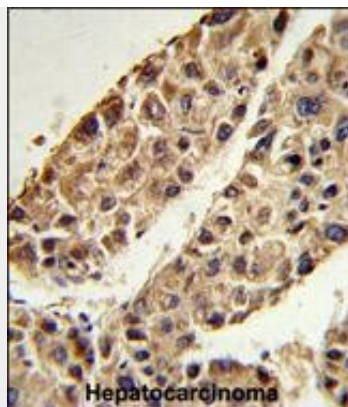
Provided below are standard protocols that you may find useful for product applications.

- [Western Blot](#)
- [Blocking Peptides](#)
- [Dot Blot](#)
- [Immunohistochemistry](#)
- [Immunofluorescence](#)
- [Immunoprecipitation](#)
- [Flow Cytometry](#)
- [Cell Culture](#)

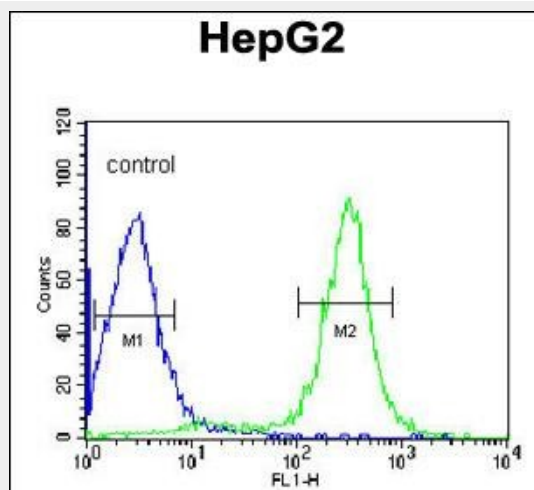
### ITIH2 Antibody (C-term) - Images



Western blot analysis of ITIH2 antibody (C-term) (Cat. #AP6712b) in HepG2 cell line lysates (35ug/lane). ITIH2 (arrow) was detected using the purified Pab.



Formalin-fixed and paraffin-embedded human hepatocarcinoma reacted with ITIH2 Antibody (C-term), which was peroxidase-conjugated to the secondary antibody, followed by DAB staining. This data demonstrates the use of this antibody for immunohistochemistry; clinical relevance has not been evaluated.



ITIH2 Antibody (C-term) (Cat. #AP6712b) flow cytometric analysis of HepG2 cells (right histogram) compared to a negative control cell (left histogram). FITC-conjugated goat-anti-rabbit secondary antibodies were used for the analysis.

#### **ITIH2 Antibody (C-term) - Background**

ITIH2 may act as a carrier of hyaluronan in serum or as a binding protein between hyaluronan and other matrix protein, including those on cell surfaces in tissues to regulate the localization, synthesis and degradation of hyaluronan which are essential to cells undergoing biological processes.

#### **ITIH2 Antibody (C-term) - References**

Obayashi, Y., *Oncol. Rep.* 19 (5), 1245-1251 (2008)  
Kishida, T., *Connect. Tissue Res.* 49 (2), 105-108 (2008)