

**KRT4 Antibody (C-term)**  
**Purified Rabbit Polyclonal Antibody (Pab)**  
**Catalog # AP6724b****Specification**

---

**KRT4 Antibody (C-term) - Product Information**

Application	WB, IHC-P, FC,E
Primary Accession	<a href="#">P19013</a>
Reactivity	Human, Mouse
Host	Rabbit
Clonality	Polyclonal
Isotype	Rabbit IgG
Calculated MW	56144
Antigen Region	386-415

**KRT4 Antibody (C-term) - Additional Information****Gene ID** 3851**Other Names**

Keratin, type II cytoskeletal 4, Cytokeratin-4, CK-4, Keratin-4, K4, Type-II keratin Kb4, KRT4, CYK4

**Target/Specificity**

This KRT4 antibody is generated from rabbits immunized with a KLH conjugated synthetic peptide between 386-415 amino acids from the C-terminal region of human KRT4.

**Dilution**

WB~~1:1000  
IHC-P~~1:50~100  
FC~~1:10~50

**Format**

Purified polyclonal antibody supplied in PBS with 0.09% (W/V) sodium azide. This antibody is prepared by Saturated Ammonium Sulfate (SAS) precipitation followed by dialysis against PBS.

**Storage**

Maintain refrigerated at 2-8°C for up to 2 weeks. For long term storage store at -20°C in small aliquots to prevent freeze-thaw cycles.

**Precautions**

KRT4 Antibody (C-term) is for research use only and not for use in diagnostic or therapeutic procedures.

**KRT4 Antibody (C-term) - Protein Information****Name** KRT4**Synonyms** CYK4

### Tissue Location

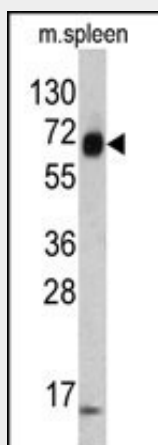
Detected in the suprabasal layer of the stratified epithelium of the esophagus, exocervix, vagina, mouth and lingual mucosa, and in cells and cell clusters in the mucosa and serous gland ducts of the esophageal submucosa (at protein level). Expressed widely in the exocervix and esophageal epithelium, with lowest levels detected in the basal cell layer.

### KRT4 Antibody (C-term) - Protocols

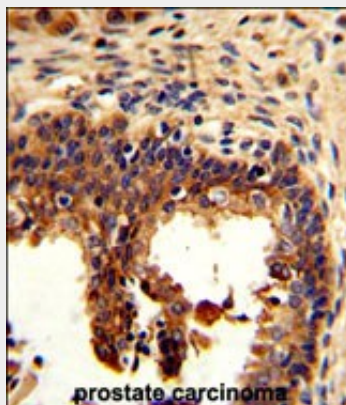
Provided below are standard protocols that you may find useful for product applications.

- [Western Blot](#)
- [Blocking Peptides](#)
- [Dot Blot](#)
- [Immunohistochemistry](#)
- [Immunofluorescence](#)
- [Immunoprecipitation](#)
- [Flow Cytometry](#)
- [Cell Culture](#)

### KRT4 Antibody (C-term) - Images

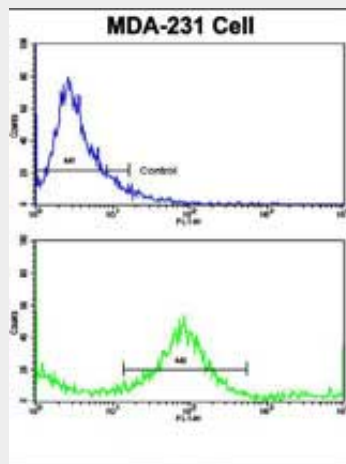


Western blot analysis of KRT4 antibody (C-term) (Cat. #AP6724b) in mouse spleen tissue lysates (35ug/lane). KRT4 (arrow) was detected using the purified Pab.



Formalin-fixed and paraffin-embedded human prostate carcinoma reacted with KRT4 Antibody (C-term), which was peroxidase-conjugated to the secondary antibody, followed by DAB staining. This data demonstrates the use of this antibody for immunohistochemistry; clinical relevance has

not been evaluated.



Flow cytometric analysis of MDA-231 cells using KRT4 Antibody (C-term)(bottom histogram) compared to a negative control cell (top histogram). FITC-conjugated goat-anti-rabbit secondary antibodies were used for the analysis.

#### **KRT4 Antibody (C-term) - Background**

The protein is a member of the keratin family. The type II cytokeratins consist of basic or neutral proteins which are arranged in pairs of heterotypic keratin chains coexpressed during differentiation of simple and stratified epithelial tissues. This type II cytokeratin is specifically expressed in differentiated layers of the mucosal and esophageal epithelia with family member KRT13.

#### **KRT4 Antibody (C-term) - References**

Zhang,J.M., Oral Dis 15 (1), 100-105 (2009)  
Samen,U., Infect. Immun. 75 (11), 5405-5414 (2007)