

**FKBP2 Antibody (N-term)**  
**Purified Rabbit Polyclonal Antibody (Pab)**  
**Catalog # AP6730a****Specification**

---

**FKBP2 Antibody (N-term) - Product Information**

Application	WB, FC, IHC-P,E
Primary Accession	<a href="#">P26885</a>
Other Accession	<a href="#">P45878</a> , <a href="#">Q32PA9</a>
Reactivity	Human
Predicted	Bovine, Mouse
Host	Rabbit
Clonality	Polyclonal
Isotype	Rabbit IgG
Calculated MW	15649
Antigen Region	11-41

**FKBP2 Antibody (N-term) - Additional Information****Gene ID** 2286**Other Names**

Peptidyl-prolyl cis-trans isomerase FKBP2, PPIase FKBP2, 13 kDa FK506-binding protein, 13 kDa FKBP, FKBP-13, FK506-binding protein 2, FKBP-2, Immunophilin FKBP13, Rotamase, FKBP2, FKBP13

**Target/Specificity**

This FKBP2 antibody is generated from rabbits immunized with a KLH conjugated synthetic peptide between 11-41 amino acids from the N-terminal region of human FKBP2.

**Dilution**

WB~~1:1000

FC~~1:10~50

IHC-P~~1:50~100

E~~Use at an assay dependent concentration.

**Format**

Purified polyclonal antibody supplied in PBS with 0.09% (W/V) sodium azide. This antibody is prepared by Saturated Ammonium Sulfate (SAS) precipitation followed by dialysis against PBS.

**Storage**

Maintain refrigerated at 2-8°C for up to 2 weeks. For long term storage store at -20°C in small aliquots to prevent freeze-thaw cycles.

**Precautions**

FKBP2 Antibody (N-term) is for research use only and not for use in diagnostic or therapeutic procedures.

**FKBP2 Antibody (N-term) - Protein Information**

**Name** FKBP2

**Synonyms** FKBP13

**Function** PPlases accelerate the folding of proteins. It catalyzes the cis-trans isomerization of proline imidic peptide bonds in oligopeptides.

**Cellular Location**

Endoplasmic reticulum membrane; Peripheral membrane protein

**Tissue Location**

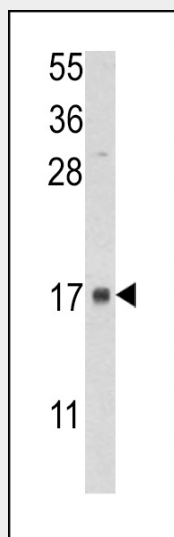
T-cells and thymus.

### FKBP2 Antibody (N-term) - Protocols

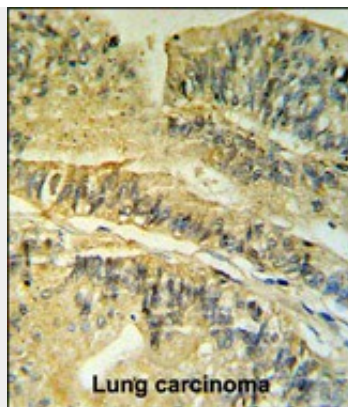
Provided below are standard protocols that you may find useful for product applications.

- [Western Blot](#)
- [Blocking Peptides](#)
- [Dot Blot](#)
- [Immunohistochemistry](#)
- [Immunofluorescence](#)
- [Immunoprecipitation](#)
- [Flow Cytometry](#)
- [Cell Culture](#)

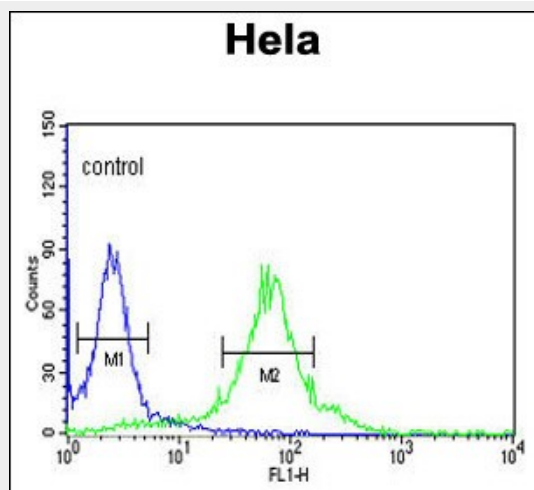
### FKBP2 Antibody (N-term) - Images



Western blot analysis of lysate from human placenta tissue lysate, using FKBP2 Antibody (N-term)(Cat. #AP6730a). AP6730a was diluted at 1:1000 at each lane. A goat anti-rabbit IgG H&L(HRP) at 1:5000 dilution was used as the secondary antibody. Lysate at 35ug per lane.



FKBP2 Antibody (N-term) (Cat. #AP6730a) IHC analysis in formalin fixed and paraffin embedded human Colon carcinoma followed by peroxidase conjugation of the secondary antibody and DAB staining. This data demonstrates the use of the FKBP2 Antibody (N-term) for immunohistochemistry. Clinical relevance has not been evaluated.



FKBP2 Antibody (N-term) (Cat. #AP6730a) flow cytometric analysis of HeLa cells (right histogram) compared to a negative control cell (left histogram). FITC-conjugated goat-anti-rabbit secondary antibodies were used for the analysis.

### FKBP2 Antibody (N-term) - Background

FKBP2 is a member of the immunophilin protein family, which play a role in immunoregulation and basic cellular processes involving protein folding and trafficking. This protein is a cis-trans prolyl isomerase that binds the immunosuppressants FK506 and rapamycin. It is thought to function as an ER chaperone and may also act as a component of membrane cytoskeletal scaffolds.

### FKBP2 Antibody (N-term) - References

Padilla, P.I., Proc. Natl. Acad. Sci. U.S.A. 100 (5), 2322-2327 (2003)  
 Bush, K.T., Biochem. J. 303 (PT 3), 705-708 (1994)