

TRF1 (phospho Ser219) Polyclonal Antibody
Catalog # AP67332**Specification**

TRF1 (phospho Ser219) Polyclonal Antibody - Product Information

Application	WB
Primary Accession	P54274
Reactivity	Human, Mouse
Host	Rabbit
Clonality	Polyclonal

TRF1 (phospho Ser219) Polyclonal Antibody - Additional Information**Gene ID** 7013**Other Names**

TERF1; PIN2; TRBF1; TRF; TRF1; Telomeric repeat-binding factor 1; NIMA-interacting protein 2; TTAGGG repeat-binding factor 1; Telomeric protein Pin2/TRF1

Dilution

WB~~Western Blot: 1/500 - 1/2000. ELISA: 1/5000. Not yet tested in other applications.

Format

Liquid in PBS containing 50% glycerol, 0.5% BSA and 0.09% (W/V) sodium azide.

Storage Conditions

-20°C

TRF1 (phospho Ser219) Polyclonal Antibody - Protein Information**Name** TERF1**Synonyms** PIN2, TRBF1, TRF, TRF1**Function**

Binds the telomeric double-stranded 5'-TTAGGG-3' repeat and negatively regulates telomere length. Involved in the regulation of the mitotic spindle. Component of the shelterin complex (telosome) that is involved in the regulation of telomere length and protection. Shelterin associates with arrays of double-stranded 5'-TTAGGG-3' repeats added by telomerase and protects chromosome ends; without its protective activity, telomeres are no longer hidden from the DNA damage surveillance and chromosome ends are inappropriately processed by DNA repair pathways.

Cellular Location

Nucleus. Cytoplasm, cytoskeleton, spindle. Chromosome, telomere. Note=Colocalizes with telomeric DNA in interphase and prophase cells. Telomeric localization decreases in metaphase, anaphase and telophase. Associates with the mitotic spindle (PubMed:11943150). Colocalizes with TRIOBP isoform 1 at the telomeres in interphase (PubMed:24692559)

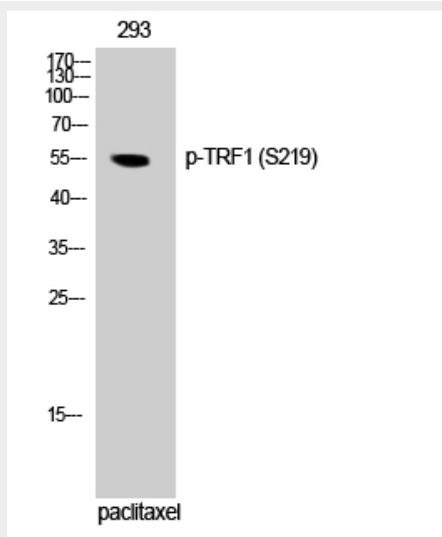
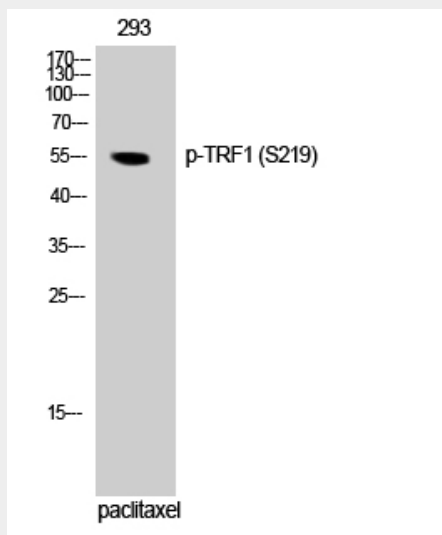
Tissue Location

Highly expressed and ubiquitous. Isoform Pin2 predominates

TRF1 (phospho Ser219) Polyclonal Antibody - Protocols

Provided below are standard protocols that you may find useful for product applications.

- [Western Blot](#)
- [Blocking Peptides](#)
- [Dot Blot](#)
- [Immunohistochemistry](#)
- [Immunofluorescence](#)
- [Immunoprecipitation](#)
- [Flow Cytometry](#)
- [Cell Culture](#)

TRF1 (phospho Ser219) Polyclonal Antibody - Images

TRF1 (phospho Ser219) Polyclonal Antibody - Background

Binds the telomeric double-stranded 5'-TTAGGG-3' repeat and negatively regulates telomere length. Involved in the regulation of the mitotic spindle. Component of the shelterin complex (telosome) that is involved in the regulation of telomere length and protection. Shelterin associates with arrays of double-stranded 5'-TTAGGG-3' repeats added by telomerase and protects chromosome ends; without its protective activity, telomeres are no longer hidden from the DNA damage surveillance and chromosome ends are inappropriately processed by DNA repair pathways.