

Eps15 (phospho Tyr849) Polyclonal Antibody
Catalog # AP67401**Specification**

Eps15 (phospho Tyr849) Polyclonal Antibody - Product Information

Application	WB
Primary Accession	P42566
Reactivity	Human, Mouse, Rat
Host	Rabbit
Clonality	Polyclonal

Eps15 (phospho Tyr849) Polyclonal Antibody - Additional Information**Gene ID** 2060**Other Names**

EPS15; AF1P; Epidermal growth factor receptor substrate 15; Protein Eps15; Protein AF-1p

Dilution

WB~~Western Blot: 1/500 - 1/2000. ELISA: 1/10000. Not yet tested in other applications.

Format

Liquid in PBS containing 50% glycerol, 0.5% BSA and 0.09% (W/V) sodium azide.

Storage Conditions

-20°C

Eps15 (phospho Tyr849) Polyclonal Antibody - Protein Information**Name** EPS15**Synonyms** AF1P**Function**

Involved in cell growth regulation. May be involved in the regulation of mitogenic signals and control of cell proliferation. Involved in the internalization of ligand-inducible receptors of the receptor tyrosine kinase (RTK) type, in particular EGFR. Plays a role in the assembly of clathrin-coated pits (CCPs). Acts as a clathrin adapter required for post-Golgi trafficking. Seems to be involved in CCPs maturation including invagination or budding. Involved in endocytosis of integrin beta-1 (ITGB1) and transferrin receptor (TFR); internalization of ITGB1 as DAB2-dependent cargo but not TFR seems to require association with DAB2.

Cellular Location

Cytoplasm. Cell membrane; Peripheral membrane protein; Cytoplasmic side. Membrane, clathrin-coated pit Note=Recruited to the plasma membrane upon EGFR activation and localizes to coated pits. Colocalizes with UBQLN1 in ubiquitin-rich cytoplasmic aggregates that are not endocytic compartments and in cytoplasmic juxtanuclear structures called aggresomes

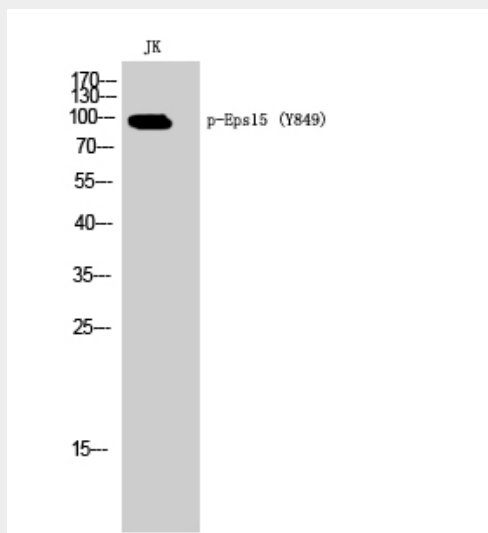
Tissue Location

Ubiquitously expressed.

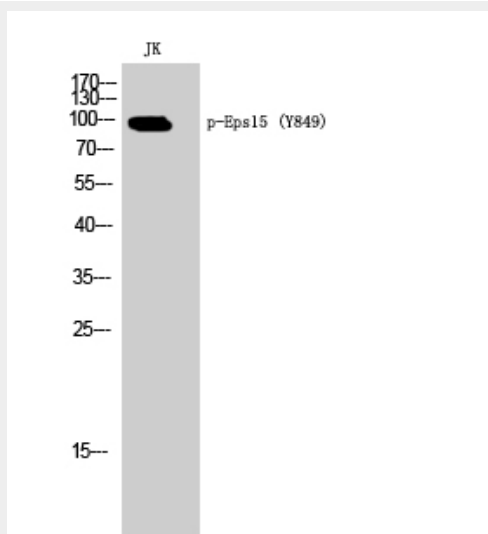
Eps15 (phospho Tyr849) Polyclonal Antibody - Protocols

Provided below are standard protocols that you may find useful for product applications.

- [Western Blot](#)
- [Blocking Peptides](#)
- [Dot Blot](#)
- [Immunohistochemistry](#)
- [Immunofluorescence](#)
- [Immunoprecipitation](#)
- [Flow Cytometry](#)
- [Cell Culture](#)

Eps15 (phospho Tyr849) Polyclonal Antibody - Images

Western Blot analysis of JK cells using Phospho-Eps15 (Y849) Polyclonal Antibody



Western Blot analysis of JK cells using Phospho-Eps15 (Y849) Polyclonal Antibody

Eps15 (phospho Tyr849) Polyclonal Antibody - Background

Involved in cell growth regulation. May be involved in the regulation of mitogenic signals and control of cell proliferation. Involved in the internalization of ligand-inducible receptors of the receptor tyrosine kinase (RTK) type, in particular EGFR. Plays a role in the assembly of clathrin-coated pits (CCPs). Acts as a clathrin adapter required for post-Golgi trafficking. Seems to be involved in CCPs maturation including invagination or budding. Involved in endocytosis of integrin beta- 1 (ITGB1) and transferrin receptor (TFR); internalization of ITGB1 as DAB2-dependent cargo but not TFR seems to require association with DAB2.