

BGN Antibody (Center)
Purified Rabbit Polyclonal Antibody (Pab)
Catalog # AP6740c**Specification**

BGN Antibody (Center) - Product Information

Application	FC, IHC-P, WB,E
Primary Accession	P21810
Other Accession	P47853 , P28653 , P21809 , O46403 , O46390
Reactivity	Human
Predicted	Bovine, Horse, Mouse, Rat, Sheep
Host	Rabbit
Clonality	Polyclonal
Isotype	Rabbit IgG
Calculated MW	41654
Antigen Region	148-176

BGN Antibody (Center) - Additional Information**Gene ID** 633**Other Names**

Biglycan, Bone/cartilage proteoglycan I, PG-S1, BGN, SLRR1A

Target/Specificity

This BGN antibody is generated from rabbits immunized with a KLH conjugated synthetic peptide between 148-176 amino acids from the Central region of human BGN.

Dilution

FC~~1:10~50

IHC-P~~1:50~100

WB~~1:1000

E~~Use at an assay dependent concentration.

Format

Purified polyclonal antibody supplied in PBS with 0.09% (W/V) sodium azide. This antibody is prepared by Saturated Ammonium Sulfate (SAS) precipitation followed by dialysis against PBS.

Storage

Maintain refrigerated at 2-8°C for up to 2 weeks. For long term storage store at -20°C in small aliquots to prevent freeze-thaw cycles.

Precautions

BGN Antibody (Center) is for research use only and not for use in diagnostic or therapeutic procedures.

BGN Antibody (Center) - Protein Information

Name BGN

Synonyms SLRR1A

Function May be involved in collagen fiber assembly.

Cellular Location

Secreted, extracellular space, extracellular matrix

Tissue Location

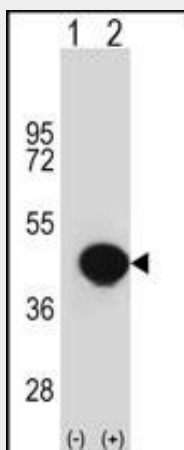
Detected in placenta (at protein level) (PubMed:32337544). Found in several connective tissues, especially in articular cartilages.

BGN Antibody (Center) - Protocols

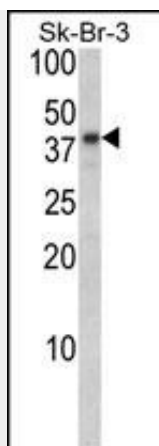
Provided below are standard protocols that you may find useful for product applications.

- [Western Blot](#)
- [Blocking Peptides](#)
- [Dot Blot](#)
- [Immunohistochemistry](#)
- [Immunofluorescence](#)
- [Immunoprecipitation](#)
- [Flow Cytometry](#)
- [Cell Culture](#)

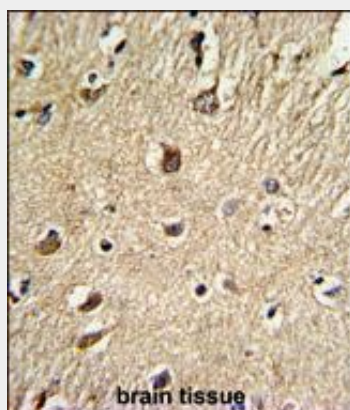
BGN Antibody (Center) - Images



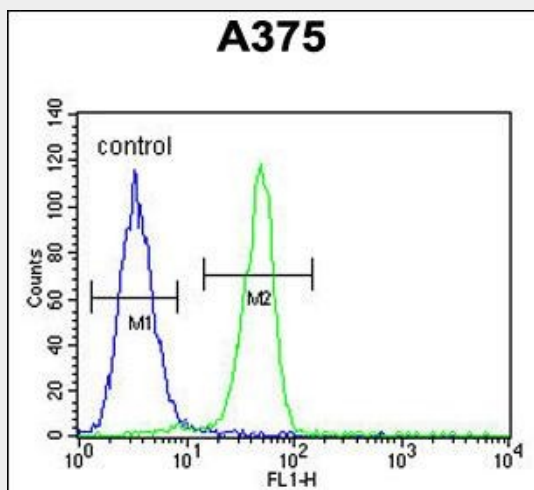
Western blot analysis of BGN (arrow) using rabbit polyclonal BGN Antibody (Center) (Cat. #AP6740c). 293 cell lysates (2 ug/lane) either nontransfected (Lane 1) or transiently transfected (Lane 2) with the BGN gene.



Western blot analysis of BGN Antibody (Center) (Cat. #AP6740c) in Sk-Br-3 cell line lysates (35ug/lane). BGN (arrow) was detected using the purified Pab.



Formalin-fixed and paraffin-embedded human brain tissue reacted with BGN Antibody (Center), which was peroxidase-conjugated to the secondary antibody, followed by DAB staining. This data demonstrates the use of this antibody for immunohistochemistry; clinical relevance has not been evaluated.



BGN Antibody (Center) (Cat. #AP6740c) flow cytometric analysis of A375 cells (right histogram) compared to a negative control cell (left histogram). FITC-conjugated goat-anti-rabbit secondary antibodies were used for the analysis.

BGN Antibody (Center) - Background

BGN is a small cellular or pericellular matrix proteoglycan that is closely related in structure to two other small proteoglycans, decorin and fibromodulin. The protein and decorin are thought to be the result of a gene duplication. Decorin contains one attached glycosaminoglycan chain, while this protein probably contains two chains. For this reason, this protein is called biglycan. This protein is thought to function in connective tissue metabolism by binding to collagen fibrils and transferring growth factor-beta. It may promote neuronal survival.

BGN Antibody (Center) - References

Sardo,M.A., Clin. Chim. Acta 406 (1-2), 89-93 (2009)
Hwang,J.Y., Am. J. Pathol. 173 (6), 1919-1928 (2008)
Traupe,H., Genomics 13 (2), 481-483 (1992)