

Crk II (phospho Tyr221) Polyclonal Antibody
Catalog # AP67459**Specification**

Crk II (phospho Tyr221) Polyclonal Antibody - Product Information

| | |
|-------------------|---------------------------|
| Application | WB, IF |
| Primary Accession | P46108 |
| Reactivity | Human, Mouse, Rat, Monkey |
| Host | Rabbit |
| Clonality | Polyclonal |

Crk II (phospho Tyr221) Polyclonal Antibody - Additional Information**Gene ID** 1398**Other Names**

CRK; Adapter molecule crk; Proto-oncogene c-Crk; p38

Dilution

WB~~Western Blot: 1/500 - 1/2000. Immunofluorescence: 1/200 - 1/1000. ELISA: 1/40000. Not yet tested in other applications.

IF~~1:50~200

Format

Liquid in PBS containing 50% glycerol, 0.5% BSA and 0.09% (W/V) sodium azide.

Storage Conditions

-20°C

Crk II (phospho Tyr221) Polyclonal Antibody - Protein Information**Name** CRK**Function**

Involved in cell branching and adhesion mediated by BCAR1- CRK-RAPGEF1 signaling and activation of RAP1.

Cellular Location

Cytoplasm. Cell membrane. Note=Translocated to the plasma membrane upon cell adhesion.

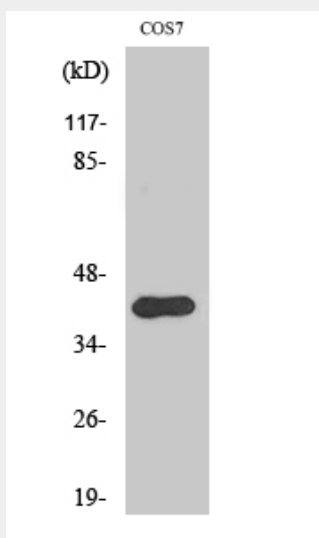
Crk II (phospho Tyr221) Polyclonal Antibody - Protocols

Provided below are standard protocols that you may find useful for product applications.

- [Western Blot](#)
- [Blocking Peptides](#)

- [Dot Blot](#)
- [Immunohistochemistry](#)
- [Immunofluorescence](#)
- [Immunoprecipitation](#)
- [Flow Cytometry](#)
- [Cell Culture](#)

Crk II (phospho Tyr221) Polyclonal Antibody - Images



Western Blot analysis of various cells using Phospho-Crk II (Y221) Polyclonal Antibody

Crk II (phospho Tyr221) Polyclonal Antibody - Background

Isoform Crk-II: Regulates cell adhesion, spreading and migration. Mediates attachment-induced MAPK8 activation, membrane ruffling and cell motility in a Rac-dependent manner. Involved in phagocytosis of apoptotic cells and cell motility via its interaction with DOCK1 and DOCK4. May regulate the EFNA5-EPHA3 signaling.