

TOMM70A Antibody (C-term)
Purified Rabbit Polyclonal Antibody (Pab)
Catalog # AP6745b**Specification**

TOMM70A Antibody (C-term) - Product Information

Application	FC, IHC-P, WB,E
Primary Accession	O94826
Other Accession	O75Q39 , O9CZW5
Reactivity	Human
Predicted	Mouse, Rat
Host	Rabbit
Clonality	Polyclonal
Isotype	Rabbit IgG
Antigen Region	579-608

TOMM70A Antibody (C-term) - Additional Information**Gene ID** 9868**Other Names**

Mitochondrial import receptor subunit TOM70, Mitochondrial precursor proteins import receptor, Translocase of outer membrane 70 kDa subunit, TOMM70A, KIAA0719, TOM70

Target/Specificity

This TOMM70A antibody is generated from rabbits immunized with a KLH conjugated synthetic peptide between 579-608 amino acids from the C-terminal region of human TOMM70A.

Dilution

FC~~1:10~50

IHC-P~~1:50~100

WB~~1:1000

E~~Use at an assay dependent concentration.

Format

Purified polyclonal antibody supplied in PBS with 0.09% (W/V) sodium azide. This antibody is prepared by Saturated Ammonium Sulfate (SAS) precipitation followed by dialysis against PBS.

Storage

Maintain refrigerated at 2-8°C for up to 2 weeks. For long term storage store at -20°C in small aliquots to prevent freeze-thaw cycles.

Precautions

TOMM70A Antibody (C-term) is for research use only and not for use in diagnostic or therapeutic procedures.

TOMM70A Antibody (C-term) - Protein Information

Name TOMM70 ([HGNC:11985](#))

Function Acts as a receptor of the preprotein translocase complex of the outer mitochondrial membrane (TOM complex) (PubMed:[12526792](#)). Recognizes and mediates the translocation of mitochondrial preproteins from the cytosol into the mitochondria in a chaperone dependent manner (PubMed:[12526792](#), PubMed:[35025629](#)). Mediates TBK1 and IRF3 activation induced by MAVS in response to Sendai virus infection and promotes host antiviral responses during virus infection (PubMed:[20628368](#), PubMed:[25609812](#), PubMed:[32728199](#)). Upon Sendai virus infection, recruits HSP90AA1:IRF3:BAX in mitochondrion and the complex induces apoptosis (PubMed:[25609812](#)).

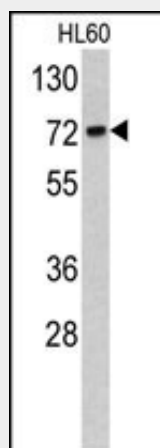
Cellular Location

Mitochondrion outer membrane; Single-pass membrane protein

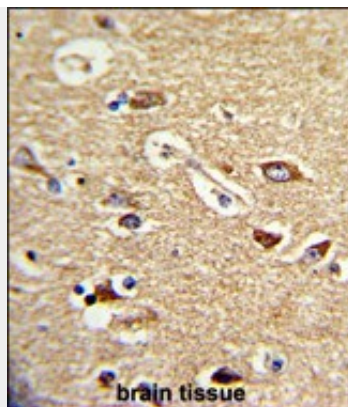
TOMM70A Antibody (C-term) - Protocols

Provided below are standard protocols that you may find useful for product applications.

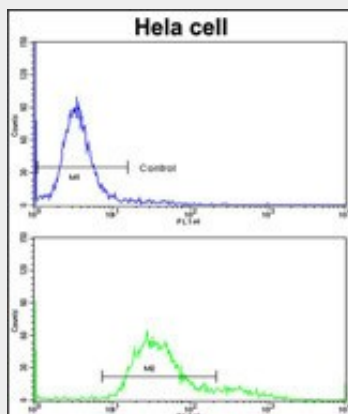
- [Western Blot](#)
- [Blocking Peptides](#)
- [Dot Blot](#)
- [Immunohistochemistry](#)
- [Immunofluorescence](#)
- [Immunoprecipitation](#)
- [Flow Cytometry](#)
- [Cell Culture](#)

TOMM70A Antibody (C-term) - Images

Western blot analysis of TOMM70A antibody (C-term) (Cat. #AP6745b) in HL60 cell line lysates (35ug/lane). TOMM70A (arrow) was detected using the purified Pab.



Formalin-fixed and paraffin-embedded human brain tissue reacted with TOMM70A Antibody (C-term), which was peroxidase-conjugated to the secondary antibody, followed by DAB staining. This data demonstrates the use of this antibody for immunohistochemistry; clinical relevance has not been evaluated.



Flow cytometric analysis of hela cells using TOMM70A Antibody (C-term)(bottom histogram) compared to a negative control cell (top histogram) FITC-conjugated goat-anti-rabbit secondary antibodies were used for the analysis.

TOMM70A Antibody (C-term) - Background

The translocase of outer mitochondrial membrane (TOM) complex is a multisubunit complex involved in the recognition, unfolding, and translocation of preproteins into the mitochondria.

TOMM70A Antibody (C-term) - References

Blesa,J.R., Gene 427 (1-2), 58-64 (2008)
Chou,C.H., Mol. Biol. Cell 17 (9), 3952-3963 (2006)
Edmonson,A.M., Cell Commun. Adhes. 9 (1), 15-27 (2002)

TOMM70A Antibody (C-term) - Citations

- [Endothelial Mitochondrial Preprotein Translocase Tomm7-Rac1 Signaling Axis Dominates Cerebrovascular Network Homeostasis.](#)
- [Proteomic analysis of mitochondria in respiratory epithelial cells infected with human respiratory syncytial virus and functional implications for virus and cell biology.](#)