

GBAS Antibody (Center)
Affinity Purified Rabbit Polyclonal Antibody (Pab)
Catalog # AP6752c**Specification**

GBAS Antibody (Center) - Product Information

Application	FC, IHC-P, WB,E
Primary Accession	075323
Reactivity	Human
Host	Rabbit
Clonality	Polyclonal
Isotype	Rabbit IgG
Calculated MW	33743
Antigen Region	130-159

GBAS Antibody (Center) - Additional Information**Gene ID** 2631**Other Names**

Protein NipSnap homolog 2, NipSnap2, Glioblastoma-amplified sequence, GBAS, NIPSNAP2

Target/Specificity

This GBAS antibody is generated from rabbits immunized with a KLH conjugated synthetic peptide between 130-159 amino acids from the Central region of human GBAS.

Dilution

FC~~1:10~50

IHC-P~~1:50~100

WB~~1:1000

E~~Use at an assay dependent concentration.

Format

Purified polyclonal antibody supplied in PBS with 0.09% (W/V) sodium azide. This antibody is purified through a protein A column, followed by peptide affinity purification.

Storage

Maintain refrigerated at 2-8°C for up to 2 weeks. For long term storage store at -20°C in small aliquots to prevent freeze-thaw cycles.

Precautions

GBAS Antibody (Center) is for research use only and not for use in diagnostic or therapeutic procedures.

GBAS Antibody (Center) - Protein Information**Name** NIPSNAP2 {ECO:0000303|PubMed:30982665, ECO:0000312|HGNC:HGNC:4179}

Function Protein involved in mitophagy by facilitating recruitment of the autophagy machinery required for clearance of damaged mitochondria (PubMed:[30982665](#)). Accumulates on the mitochondria surface in response to mitochondrial depolarization and acts as a 'eat me' signal by recruiting proteins involved in selective autophagy, such as autophagy receptors (CALCOCO2/NDP52, NBR1, SQSTM1/p62, TAX1BP1 and WDFY3/ALFY) and ATG8 family proteins (MAP1LC3A, MAP1LC3B, MAP1LC3C, GABARAP, GABARAPL1 and GABARAPL2) (PubMed:[30982665](#)).

Cellular Location

Mitochondrion matrix

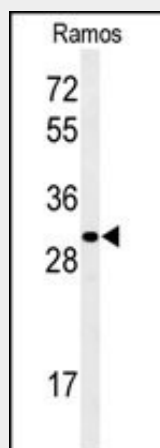
Tissue Location

Widely expressed (PubMed:9615231). Most abundant in heart and skeletal muscle (PubMed:9615231)

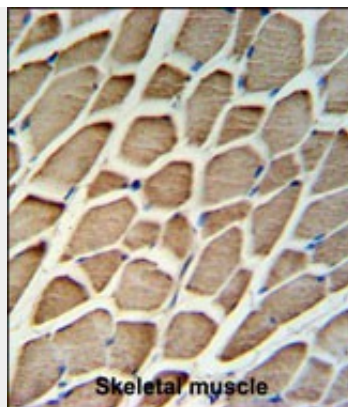
GBAS Antibody (Center) - Protocols

Provided below are standard protocols that you may find useful for product applications.

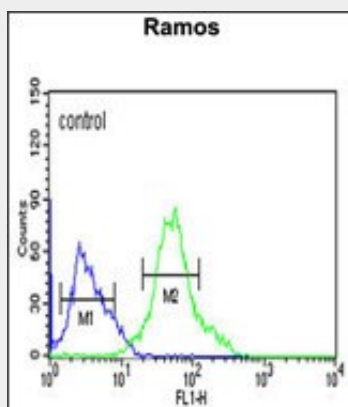
- [Western Blot](#)
- [Blocking Peptides](#)
- [Dot Blot](#)
- [Immunohistochemistry](#)
- [Immunofluorescence](#)
- [Immunoprecipitation](#)
- [Flow Cytometry](#)
- [Cell Culture](#)

GBAS Antibody (Center) - Images

Western blot analysis of GBAS Antibody (Center) (Cat. #AP6752c) in Ramos cell line lysates (35ug/lane).GBAS (arrow) was detected using the purified Pab.



GBAS Antibody (Center) (Cat. #AP6752c) IHC analysis in formalin fixed and paraffin embedded skeletal muscle followed by peroxidase conjugation of the secondary antibody and DAB staining. This data demonstrates the use of the GBAS Antibody (Center) for immunohistochemistry. Clinical relevance has not been evaluated.



GBAS Antibody (Center) (Cat. #AP6752c) flow cytometric analysis of Ramos cells (right histogram) compared to a negative control cell (left histogram). FITC-conjugated goat-anti-rabbit secondary antibodies were used for the analysis.

GBAS Antibody (Center) - Background

Chromosomal region 7p12, which contains GBAS, is amplified in approximately 40% of glioblastomas, the most common and malignant form of central nervous system tumor. The predicted 286-amino acid protein contains a signal peptide, a transmembrane domain, and 2 tyrosine phosphorylation sites. The GBAS transcript is expressed most abundantly in heart and skeletal muscle. GBAS protein might be involved in vesicular transport.

GBAS Antibody (Center) - References

Simpson, J.C., et al. EMBO Rep. 1(3):287-292(2000)
Seroussi, E., et al. Gene 212(1):13-20(1998)
Wang, X.Y., et al. Genomics 49(3):448-451(1998)

GBAS Antibody (Center) - Citations

- [NIPSNAP1 and NIPSNAP2 Act as](#)