

Ksr-1 (phospho Ser392) Polyclonal Antibody
Catalog # AP67535**Specification**

Ksr-1 (phospho Ser392) Polyclonal Antibody - Product Information

Application	WB, IHC-P
Primary Accession	Q8IVT5
Reactivity	Human, Mouse
Host	Rabbit
Clonality	Polyclonal

Ksr-1 (phospho Ser392) Polyclonal Antibody - Additional Information**Gene ID** 8844**Other Names**

KSR1; KSR; Kinase suppressor of Ras 1

Dilution

WB~~Western Blot: 1/500 - 1/2000. Immunohistochemistry: 1/100 - 1/300. ELISA: 1/20000. Not yet tested in other applications.

IHC-P~~N/A

Format

Liquid in PBS containing 50% glycerol, 0.5% BSA and 0.09% (W/V) sodium azide.

Storage Conditions

-20°C

Ksr-1 (phospho Ser392) Polyclonal Antibody - Protein Information**Name** KSR1**Synonyms** KSR**Function**

Part of a multiprotein signaling complex which promotes phosphorylation of Raf family members and activation of downstream MAP kinases (By similarity). Independently of its kinase activity, acts as MAP2K1/MEK1 and MAP2K2/MEK2-dependent allosteric activator of BRAF; upon binding to MAP2K1/MEK1 or MAP2K2/MEK2, dimerizes with BRAF and promotes BRAF-mediated phosphorylation of MAP2K1/MEK1 and/or MAP2K2/MEK2 (PubMed:29433126). Promotes activation of MAPK1 and/or MAPK3, both in response to EGF and to cAMP (By similarity). Its kinase activity is unsure (By similarity). Some protein kinase activity has been detected in vitro, however the physiological relevance of this activity is unknown (By similarity).

Cellular Location

Cytoplasm. Membrane; Peripheral membrane protein. Cell membrane

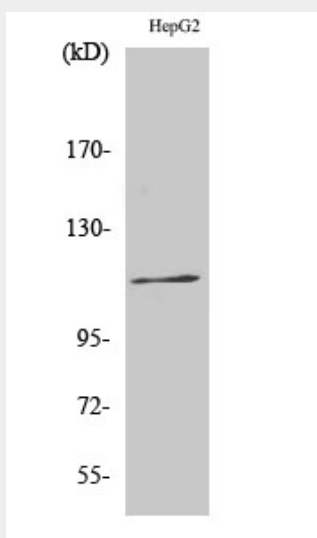
{ECO:0000250|UniProtKB:Q61097}; Peripheral membrane protein
{ECO:0000250|UniProtKB:Q61097}. Cell projection, ruffle membrane
{ECO:0000250|UniProtKB:Q61097}. Endoplasmic reticulum membrane. Note=In unstimulated cells, where the phosphorylated form is bound to a 14-3-3 protein, sequestration in the cytoplasm occurs. Following growth factor treatment, the protein is free for membrane translocation, and it moves from the cytoplasm to the cell periphery.

Ksr-1 (phospho Ser392) Polyclonal Antibody - Protocols

Provided below are standard protocols that you may find useful for product applications.

- [Western Blot](#)
- [Blocking Peptides](#)
- [Dot Blot](#)
- [Immunohistochemistry](#)
- [Immunofluorescence](#)
- [Immunoprecipitation](#)
- [Flow Cytometry](#)
- [Cell Culture](#)

Ksr-1 (phospho Ser392) Polyclonal Antibody - Images



Ksr-1 (phospho Ser392) Polyclonal Antibody - Background

Scaffolding protein that is part of a multiprotein signaling complex. Promotes phosphorylation of Raf family members and activation of downstream MAP kinases. Promotes activation of MAPK1 and/or MAPK3, both in response to EGF and to cAMP. Does not have kinase activity by itself.