

**IL17RB Antibody (Center)**  
**Purified Rabbit Polyclonal Antibody (Pab)**  
**Catalog # AP6762C****Specification**

---

**IL17RB Antibody (Center) - Product Information**

Application	FC, IHC-P, WB,E
Primary Accession	<a href="#">Q9NRM6</a>
Reactivity	Human
Host	Rabbit
Clonality	Polyclonal
Isotype	Rabbit IgG
Calculated MW	55885
Antigen Region	207-234

**IL17RB Antibody (Center) - Additional Information****Gene ID** 55540**Other Names**

Interleukin-17 receptor B, IL-17 receptor B, IL-17RB, Cytokine receptor-like 4, IL-17 receptor homolog 1, IL-17Rh1, IL17Rh1, Interleukin-17B receptor, IL-17B receptor, IL17RB, CRL4, EVI27, IL17BR

**Target/Specificity**

This IL17\_ antibody is generated from rabbits immunized with a KLH conjugated synthetic peptide between 207-234 amino acids from the Central region of human IL17\_.

**Dilution**

FC~~1:10~50

IHC-P~~1:10~50

WB~~1:1000

E~~Use at an assay dependent concentration.

**Format**

Purified polyclonal antibody supplied in PBS with 0.09% (W/V) sodium azide. This antibody is prepared by Saturated Ammonium Sulfate (SAS) precipitation followed by dialysis against PBS.

**Storage**

Maintain refrigerated at 2-8°C for up to 2 weeks. For long term storage store at -20°C in small aliquots to prevent freeze-thaw cycles.

**Precautions**

IL17RB Antibody (Center) is for research use only and not for use in diagnostic or therapeutic procedures.

**IL17RB Antibody (Center) - Protein Information**

**Name** IL17RB

**Synonyms** CRL4, EVI27, IL17BR

**Function** Receptor for the pro-inflammatory cytokines IL17B and IL17E. May play a role in controlling the growth and/or differentiation of hematopoietic cells.

**Cellular Location**

[Isoform 1]: Cell membrane; Single-pass type I membrane protein

**Tissue Location**

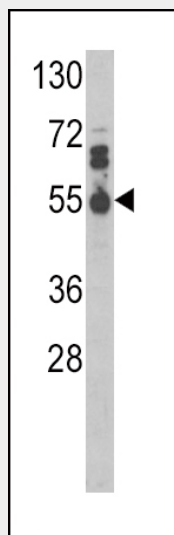
Expressed in several endocrine tissues, mostly in fetal and adult liver, kidney, pancreas, testis, colon, brain and small intestine; not detected in peripheral blood leukocytes, lymphoid organs, and most cell lines

**IL17RB Antibody (Center) - Protocols**

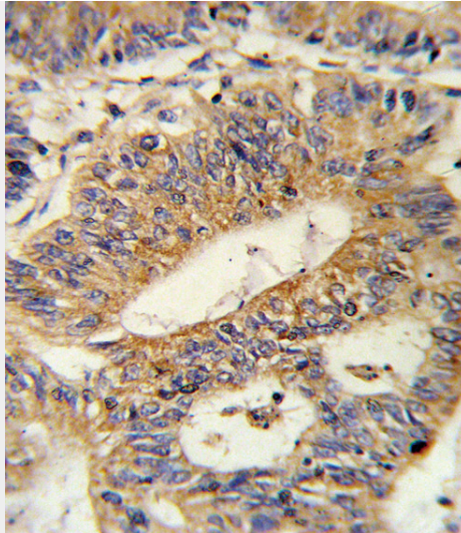
Provided below are standard protocols that you may find useful for product applications.

- [Western Blot](#)
- [Blocking Peptides](#)
- [Dot Blot](#)
- [Immunohistochemistry](#)
- [Immunofluorescence](#)
- [Immunoprecipitation](#)
- [Flow Cytometry](#)
- [Cell Culture](#)

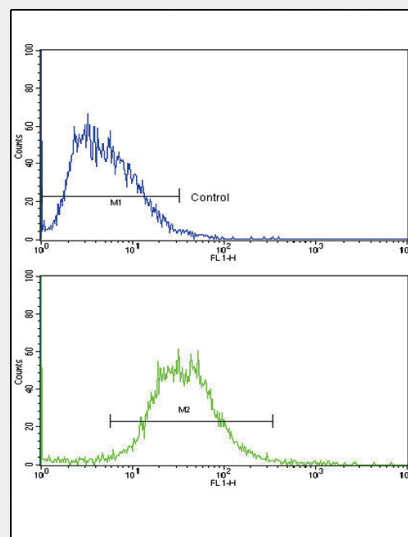
**IL17RB Antibody (Center) - Images**



Western blot analysis of IL17RB Antibody (Center) (Cat. #AP6762c) in MDA-MB468 cell line lysates (35ug/lane). IL17RB (arrow) was detected using the purified Pab.



Formalin-fixed and paraffin-embedded human colon carcinoma reacted with IL17RB Antibody (Center), which was peroxidase-conjugated to the secondary antibody, followed by DAB staining. This data demonstrates the use of this antibody for immunohistochemistry; clinical relevance has not been evaluated.



Flow cytometric analysis of HepG2 cells using IL17RB Antibody (Center)(bottom histogram) compared to a negative control cell (top histogram). FITC-conjugated goat-anti-rabbit secondary antibodies were used for the analysis.

### IL17RB Antibody (Center) - Background

IL17RB is a cytokine receptor. This receptor specifically binds to IL17B and IL17E, but does not bind to IL17 and IL17C. This receptor has been shown to mediate the activation of NF-kappaB and the production of IL8 induced by IL17E.

### IL17RB Antibody (Center) - References

Goetz,M.P., et.al., Clin. Cancer Res. 14 (18), 5864-5868 (2008)