

IGFBP6 Antibody (C-term)
Purified Rabbit Polyclonal Antibody (Pab)
Catalog # AP6764b**Specification**

IGFBP6 Antibody (C-term) - Product Information

Application	FC, IHC-P, WB,E
Primary Accession	P24592
Other Accession	Q05718
Reactivity	Human
Predicted	Bovine
Host	Rabbit
Clonality	Polyclonal
Isotype	Rabbit IgG
Calculated MW	25322
Antigen Region	176-200

IGFBP6 Antibody (C-term) - Additional Information**Gene ID** 3489**Other Names**

Insulin-like growth factor-binding protein 6, IBP-6, IGF-binding protein 6, IGFBP-6, IGFBP6, IBP6

Target/Specificity

This IGFBP6 antibody is generated from rabbits immunized with a KLH conjugated synthetic peptide between 176-200 amino acids from the C-terminal region of human IGFBP6.

Dilution

FC~~1:10~50

IHC-P~~1:50~100

WB~~1:1000

E~~Use at an assay dependent concentration.

Format

Purified polyclonal antibody supplied in PBS with 0.09% (W/V) sodium azide. This antibody is prepared by Saturated Ammonium Sulfate (SAS) precipitation followed by dialysis against PBS.

Storage

Maintain refrigerated at 2-8°C for up to 2 weeks. For long term storage store at -20°C in small aliquots to prevent freeze-thaw cycles.

Precautions

IGFBP6 Antibody (C-term) is for research use only and not for use in diagnostic or therapeutic procedures.

IGFBP6 Antibody (C-term) - Protein Information

Name IGFBP6 ([HGNC:5475](#))

Synonyms IBP6

Function IGF-binding proteins prolong the half-life of the IGFs and have been shown to either inhibit or stimulate the growth promoting effects of the IGFs on cell culture. They alter the interaction of IGFs with their cell surface receptors. Activates the MAPK signaling pathway and induces cell migration (PubMed:[24003225](#)).

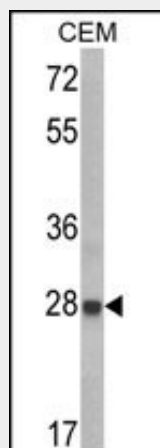
Cellular Location
Secreted.

IGFBP6 Antibody (C-term) - Protocols

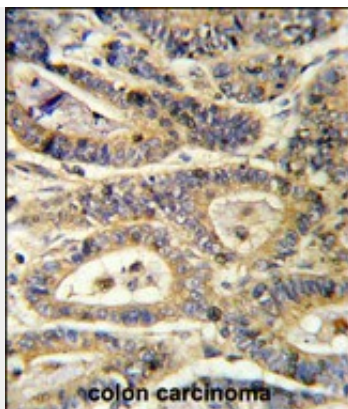
Provided below are standard protocols that you may find useful for product applications.

- [Western Blot](#)
- [Blocking Peptides](#)
- [Dot Blot](#)
- [Immunohistochemistry](#)
- [Immunofluorescence](#)
- [Immunoprecipitation](#)
- [Flow Cytometry](#)
- [Cell Culture](#)

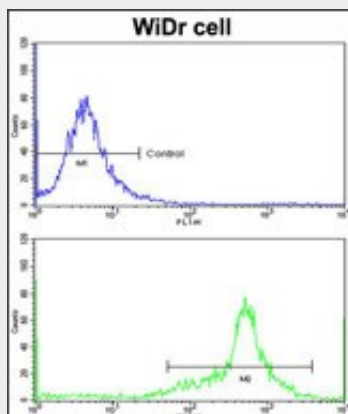
IGFBP6 Antibody (C-term) - Images



Western blot analysis of IGFBP6 Antibody (C-term) (Cat. #AP6764b) in CEM cell line lysates (35ug/lane). IGFBP6 (arrow) was detected using the purified Pab.



Formalin-fixed and paraffin-embedded human colon carcinoma reacted with IGFBP6 Antibody (C-term), which was peroxidase-conjugated to the secondary antibody, followed by DAB staining. This data demonstrates the use of this antibody for immunohistochemistry; clinical relevance has not been evaluated.



Flow cytometric analysis of WiDr cells using IGFBP6 Antibody (C-term) (bottom histogram) compared to a negative control cell (top histogram). FITC-conjugated goat-anti-rabbit secondary antibodies were used for the analysis.

IGFBP6 Antibody (C-term) - Background

IGFBP6 (IGF binding protein 6) is a member of the IGFBP family that regulates the actions of IGFs. It acts extracellularly in an autocrine/paracrine manner. IGFBP6 binds preferentially to IGF-II. IGFBP6 has been shown to inhibit the growth of tumour cells and to promote apoptosis.

IGFBP6 Antibody (C-term) - References

Guey, L.T., et al., Eur. Urol. (2009)