

GATA2 Antibody (C-term)
Purified Rabbit Polyclonal Antibody (Pab)
Catalog # AP6772b**Specification**

GATA2 Antibody (C-term) - Product Information

| | |
|-------------------|------------------------|
| Application | WB, FC,E |
| Primary Accession | P23769 |
| Other Accession | P23824 |
| Reactivity | Human |
| Predicted | Chicken |
| Host | Rabbit |
| Clonality | Polyclonal |
| Isotype | Rabbit IgG |
| Calculated MW | 50500 |
| Antigen Region | 380-407 |

GATA2 Antibody (C-term) - Additional Information**Gene ID** 2624**Other Names**

Endothelial transcription factor GATA-2, GATA-binding protein 2, GATA2

Target/Specificity

This GATA2 antibody is generated from rabbits immunized with a KLH conjugated synthetic peptide between 380-407 amino acids from the C-terminal region of human GATA2.

Dilution

WB~~1:1000

FC~~1:10~50

E~~Use at an assay dependent concentration.

Format

Purified polyclonal antibody supplied in PBS with 0.09% (W/V) sodium azide. This antibody is prepared by Saturated Ammonium Sulfate (SAS) precipitation followed by dialysis against PBS.

Storage

Maintain refrigerated at 2-8°C for up to 2 weeks. For long term storage store at -20°C in small aliquots to prevent freeze-thaw cycles.

Precautions

GATA2 Antibody (C-term) is for research use only and not for use in diagnostic or therapeutic procedures.

GATA2 Antibody (C-term) - Protein Information**Name** GATA2

Function Transcriptional activator which regulates endothelin-1 gene expression in endothelial cells. Binds to the consensus sequence 5'- AGATAG-3'.

Cellular Location

Nucleus.

Tissue Location

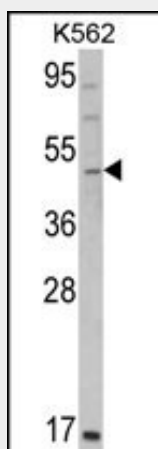
Endothelial cells.

GATA2 Antibody (C-term) - Protocols

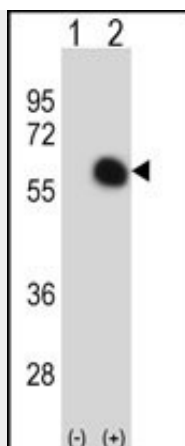
Provided below are standard protocols that you may find useful for product applications.

- [Western Blot](#)
- [Blocking Peptides](#)
- [Dot Blot](#)
- [Immunohistochemistry](#)
- [Immunofluorescence](#)
- [Immunoprecipitation](#)
- [Flow Cytometry](#)
- [Cell Culture](#)

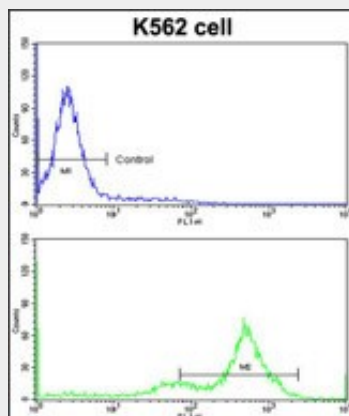
GATA2 Antibody (C-term) - Images



Western blot analysis of GATA2 Antibody (C-term) (Cat. #AP6772b) in K562 cell line lysates (35ug/lane). GATA2 (arrow) was detected using the purified Pab.



Western blot analysis of GATA2 (arrow) using rabbit polyclonal GATA2 Antibody (C-term) (Cat. #AP6772b). 293 cell lysates (2 ug/lane) either nontransfected (Lane 1) or transiently transfected (Lane 2) with the GATA2 gene.



Flow cytometric analysis of K562 cells using GATA2 Antibody (C-term)(bottom histogram) compared to a negative control cell (top histogram) FITC-conjugated goat-anti-rabbit secondary antibodies were used for the analysis.

GATA2 Antibody (C-term) - Background

GATA2 is a member of the GATA family of zinc-finger transcription factors that are named for the consensus nucleotide sequence they bind in the promoter regions of target genes. This protein plays an essential role in regulating transcription of genes involved in the development and proliferation of hematopoietic and endocrine cell lineages.

GATA2 Antibody (C-term) - References

Pan,X., et.al., J. Biochem. 127 (1), 105-112 (2000)