

SLP-76 (phospho Tyr128) Polyclonal Antibody
Catalog # AP67733**Specification****SLP-76 (phospho Tyr128) Polyclonal Antibody - Product Information**

Application	WB, IHC-P
Primary Accession	Q13094
Reactivity	Human, Mouse, Rat
Host	Rabbit
Clonality	Polyclonal

SLP-76 (phospho Tyr128) Polyclonal Antibody - Additional Information**Gene ID** 3937**Other Names**

LCP2; Lymphocyte cytosolic protein 2; SH2 domain-containing leukocyte protein of 76 kDa; SLP-76 tyrosine phosphoprotein; SLP76

Dilution

WB~~Western Blot: 1/500 - 1/2000. Immunohistochemistry: 1/100 - 1/300. ELISA: 1/5000. Not yet tested in other applications.

IHC-P~~N/A

Format

Liquid in PBS containing 50% glycerol, 0.5% BSA and 0.09% (W/V) sodium azide.

Storage Conditions

-20°C

SLP-76 (phospho Tyr128) Polyclonal Antibody - Protein Information**Name** LCP2**Function**

Adapter protein primarily involved in signaling pathways within T-cells, as well as other immune cells such as platelets, mast cells, and natural killer (NK) cells (PubMed:11313406, PubMed:33159816). Plays a crucial role for transducing signal from the T-cell receptor (TCR) after antigen recognition leading to T-cell activation. Mechanistically, once phosphorylated by the kinase ZAP70, mediates interactions with the guanine-nucleotide exchange factor VAV1, the adapter protein NCK and the kinase ITK (PubMed:8673706, PubMed:8702662). In turn, stimulates the activation of PKC-theta/PRKCQ and NF-kappa-B transcriptional activity in response to CD3 and CD28 costimulation (PubMed:11313406). Also plays an essential role in AGER- induced signaling pathways including p38 MAPK and ERK1/2 activation

leading to cytokine release and pro-inflammatory responses (PubMed:33436632).

Cellular Location

Cytoplasm.

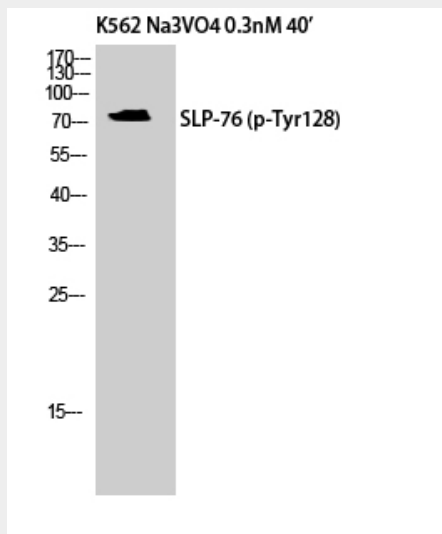
Tissue Location

Highly expressed in spleen, thymus and peripheral blood leukocytes. Highly expressed also in T-cell and monocytic cell lines, expressed at lower level in B-cell lines. Not detected in fibroblast or neuroblastoma cell lines

SLP-76 (phospho Tyr128) Polyclonal Antibody - Protocols

Provided below are standard protocols that you may find useful for product applications.

- [Western Blot](#)
- [Blocking Peptides](#)
- [Dot Blot](#)
- [Immunohistochemistry](#)
- [Immunofluorescence](#)
- [Immunoprecipitation](#)
- [Flow Cytometry](#)
- [Cell Culture](#)

SLP-76 (phospho Tyr128) Polyclonal Antibody - Images

Western Blot analysis of K562 cells using Phospho-SLP-76 (Y128) Polyclonal Antibody

SLP-76 (phospho Tyr128) Polyclonal Antibody - Background

Involved in T-cell antigen receptor mediated signaling.