

IκB-ε (phospho Ser22) Polyclonal Antibody
Catalog # AP67790**Specification****IκB-ε (phospho Ser22) Polyclonal Antibody - Product Information**

Application	WB, IHC-P, IF
Primary Accession	O00221
Reactivity	Human, Mouse, Rat
Host	Rabbit
Clonality	Polyclonal

IκB-ε (phospho Ser22) Polyclonal Antibody - Additional Information**Gene ID** 4794**Other Names**

NFKBIE; IKBE; NF-kappa-B inhibitor epsilon; NF-kappa-BIE; I-kappa-B-epsilon; IκB-E; IκB-epsilon; IκappaBepsilon

Dilution

WB~~Western Blot: 1/500 - 1/2000. Immunohistochemistry: 1/100 - 1/300. Immunofluorescence: 1/200 - 1/1000. ELISA: 1/40000. Not yet tested in other applications.

IHC-P~~N/A

IF~~1:50~200

Format

Liquid in PBS containing 50% glycerol, 0.5% BSA and 0.09% (W/V) sodium azide.

Storage Conditions

-20°C

IκB-ε (phospho Ser22) Polyclonal Antibody - Protein Information**Name** NFKBIE**Synonyms** IKBE**Function**

Sequesters NF-kappa-B transcription factor complexes in the cytoplasm, thereby inhibiting their activity (PubMed:9315679). Sequestered complexes include NFKB1-RELA (p50-p65) and NFKB1-REL (p50- c-Rel) complexes (PubMed:9135156, PubMed:9315679). Limits B-cell activation in response to pathogens, and also plays an important role in B-cell development (By similarity).

Cellular Location

Cytoplasm.

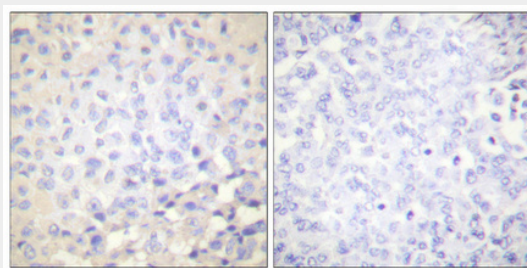
Tissue Location

Highly expressed in spleen, testis and lung, followed by kidney, pancreas, heart, placenta and brain. Also expressed in granulocytes and macrophages

I κ B- ϵ (phospho Ser22) Polyclonal Antibody - Protocols

Provided below are standard protocols that you may find useful for product applications.

- [Western Blot](#)
- [Blocking Peptides](#)
- [Dot Blot](#)
- [Immunohistochemistry](#)
- [Immunofluorescence](#)
- [Immunoprecipitation](#)
- [Flow Cytometry](#)
- [Cell Culture](#)

I κ B- ϵ (phospho Ser22) Polyclonal Antibody - Images

Immunohistochemical analysis of paraffin-embedded Human breast cancer. Antibody was diluted at 1:100(4°,overnight). High-pressure and temperature Tris-EDTA,pH8.0 was used for antigen retrieval. Negative control (right) obtained from antibody was pre-absorbed by immunogen peptide.

I κ B- ϵ (phospho Ser22) Polyclonal Antibody - Background

Inhibits NF-kappa-B by complexing with and trapping it in the cytoplasm. Inhibits DNA-binding of NF-kappa-B p50-p65 and p50-c-Rel complexes.