

14-3-3 θ/τ (phospho Ser232) Polyclonal Antibody
Catalog # AP67835**Specification**

14-3-3 θ/τ (phospho Ser232) Polyclonal Antibody - Product Information

Application	WB
Primary Accession	P27348
Reactivity	Human, Mouse, Rat
Host	Rabbit
Clonality	Polyclonal

14-3-3 θ/τ (phospho Ser232) Polyclonal Antibody - Additional Information**Gene ID** 10971**Other Names**

YWHAQ; 14-3-3 protein theta; 14-3-3 protein T-cell; 14-3-3 protein tau; Protein HS1

Dilution

WB~~Western Blot: 1/500 - 1/2000. Immunohistochemistry: 1/100 - 1/300. Immunofluorescence: 1/200 - 1/1000. ELISA: 1/5000. Not yet tested in other applications.

Format

Liquid in PBS containing 50% glycerol, 0.5% BSA and 0.09% (W/V) sodium azide.

Storage Conditions

-20°C

14-3-3 θ/τ (phospho Ser232) Polyclonal Antibody - Protein Information**Name** YWHAQ**Function**

Adapter protein implicated in the regulation of a large spectrum of both general and specialized signaling pathways. Binds to a large number of partners, usually by recognition of a phosphoserine or phosphothreonine motif. Binding generally results in the modulation of the activity of the binding partner. Negatively regulates the kinase activity of PDPK1.

Cellular Location

Cytoplasm. Note=In neurons, axonally transported to the nerve terminals

Tissue Location

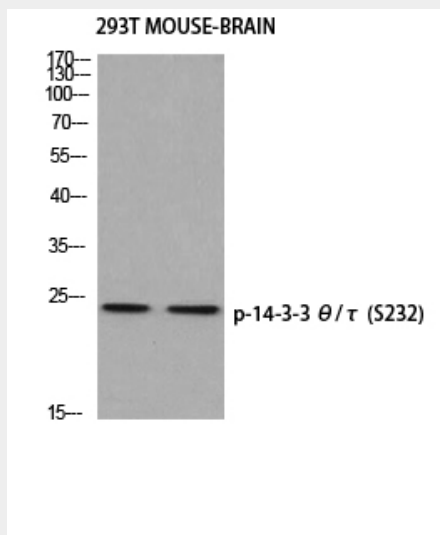
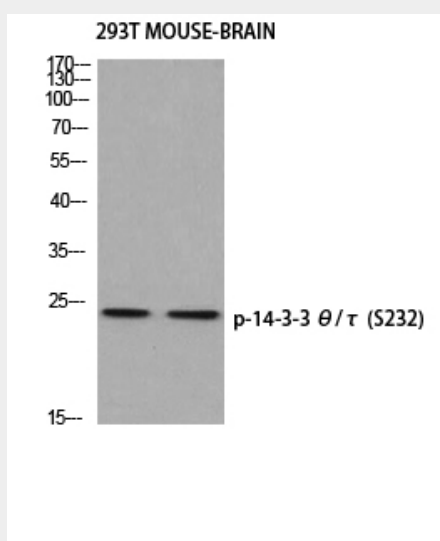
Abundantly expressed in brain, heart and pancreas, and at lower levels in kidney and placenta. Up-regulated in the lumbar spinal cord from patients with sporadic amyotrophic lateral sclerosis (ALS) compared with controls, with highest levels of expression in individuals with predominant lower motor neuron involvement

14-3-3 θ/τ (phospho Ser232) Polyclonal Antibody - Protocols

Provided below are standard protocols that you may find useful for product applications.

- [Western Blot](#)
- [Blocking Peptides](#)
- [Dot Blot](#)
- [Immunohistochemistry](#)
- [Immunofluorescence](#)
- [Immunoprecipitation](#)
- [Flow Cytometry](#)
- [Cell Culture](#)

14-3-3 θ/τ (phospho Ser232) Polyclonal Antibody - Images



14-3-3 θ/τ (phospho Ser232) Polyclonal Antibody - Background

Adapter protein implicated in the regulation of a large spectrum of both general and specialized

signaling pathways. Binds to a large number of partners, usually by recognition of a phosphoserine or phosphothreonine motif. Binding generally results in the modulation of the activity of the binding partner. Negatively regulates the kinase activity of PDPK1.