

**APOL4 Antibody (Center E273)**  
**Purified Rabbit Polyclonal Antibody (Pab)**  
**Catalog # AP6783c****Specification**

---

**APOL4 Antibody (Center E273) - Product Information**

Application	FC, IHC-P, WB,E
Primary Accession	<a href="#">Q9BPW4</a>
Reactivity	Human
Host	Rabbit
Clonality	Polyclonal
Isotype	Rabbit IgG
Calculated MW	39164
Antigen Region	258-290

**APOL4 Antibody (Center E273) - Additional Information****Gene ID** 80832**Other Names**

Apolipoprotein L4, Apolipoprotein L-IV, ApoL-IV, APOL4

**Target/Specificity**

This APOL4 antibody is generated from rabbits immunized with a KLH conjugated synthetic peptide between 258-290 amino acids from the Central region of human APOL4.

**Dilution**

FC~~1:10~50

IHC-P~~1:50~100

WB~~1:1000

E~~Use at an assay dependent concentration.

**Format**

Purified polyclonal antibody supplied in PBS with 0.09% (W/V) sodium azide. This antibody is prepared by Saturated Ammonium Sulfate (SAS) precipitation followed by dialysis against PBS.

**Storage**

Maintain refrigerated at 2-8°C for up to 2 weeks. For long term storage store at -20°C in small aliquots to prevent freeze-thaw cycles.

**Precautions**

APOL4 Antibody (Center E273) is for research use only and not for use in diagnostic or therapeutic procedures.

**APOL4 Antibody (Center E273) - Protein Information****Name** APOL4

**Function** May play a role in lipid exchange and transport throughout the body. May participate in reverse cholesterol transport from peripheral cells to the liver (By similarity).

**Cellular Location**

Secreted.

**Tissue Location**

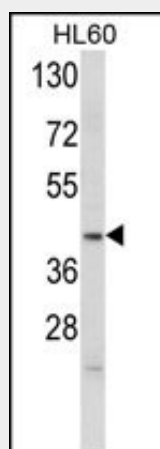
Widely expressed; the highest levels are in spinal cord, placenta, adrenal gland; also detected in spleen, bone marrow, uterus, trachea, mammary gland and testis; levels are low in brain, heart and pancreas

**APOL4 Antibody (Center E273) - Protocols**

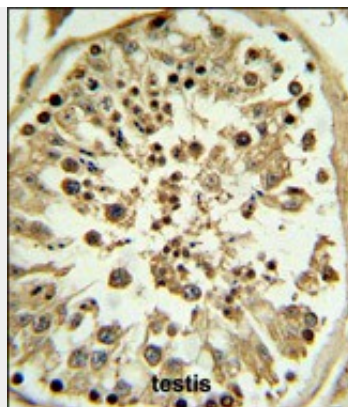
Provided below are standard protocols that you may find useful for product applications.

- [Western Blot](#)
- [Blocking Peptides](#)
- [Dot Blot](#)
- [Immunohistochemistry](#)
- [Immunofluorescence](#)
- [Immunoprecipitation](#)
- [Flow Cytometry](#)
- [Cell Culture](#)

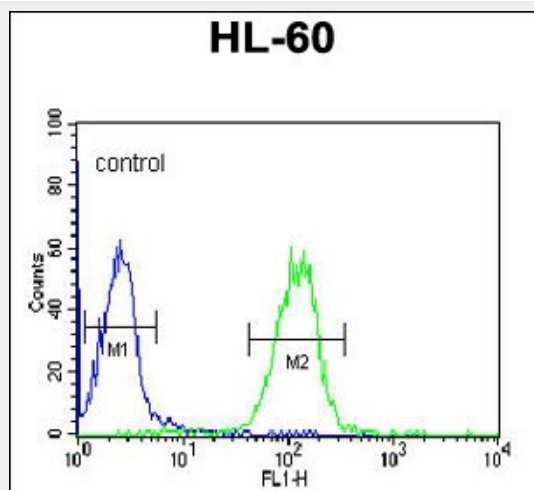
**APOL4 Antibody (Center E273) - Images**



Western blot analysis of APOL4 Antibody (Center E273) (Cat. #AP6783c) in HL60 cell line lysates (35ug/lane). APOL4 (arrow) was detected using the purified Pab.



APOL4 Antibody (Center E273) (Cat. #AP6783c) IHC analysis in formalin fixed and paraffin embedded human testis tissue followed by peroxidase conjugation of the secondary antibody and DAB staining. This data demonstrates the use of the APOL4 Antibody (Center E273) for immunohistochemistry. Clinical relevance has not been evaluated.



APOL4 Antibody (Center E273) (Cat. #AP6783c) flow cytometric analysis of HL-60 cells (right histogram) compared to a negative control cell (left histogram). FITC-conjugated goat-anti-rabbit secondary antibodies were used for the analysis.

#### **APOL4 Antibody (Center E273) - Background**

APOL4 is a member of the apolipoprotein L family and may play a role in lipid exchange and transport throughout the body, as well as in reverse cholesterol transport from peripheral cells to the liver.

#### **APOL4 Antibody (Center E273) - References**

Takahashi, S., et al., Schizophr. Res. 104 (1-3), 153-164 (2008)