

EDNRB Antibody (C-term)
Purified Rabbit Polyclonal Antibody (Pab)
Catalog # AP6789B**Specification**

EDNRB Antibody (C-term) - Product Information

Application	FC, IF, IHC-P, WB,E
Primary Accession	P24530
Other Accession	P21451 , Q9NOW7 , P35463 , P48302 , P28088 , O62709
Reactivity	Human, Mouse
Predicted	Bovine, Horse, Pig, Rabbit, Rat
Host	Rabbit
Clonality	Polyclonal
Isotype	Rabbit IgG
Antigen Region	409-439

EDNRB Antibody (C-term) - Additional Information**Gene ID** 1910**Other Names**

Endothelin B receptor, ET-B, ET-BR, Endothelin receptor non-selective type, EDNRB, ETRB

Target/Specificity

This EDNRB antibody is generated from rabbits immunized with a KLH conjugated synthetic peptide between 409-439 amino acids from the C-terminal region of human EDNRB.

Dilution

FC~~1:10~50

IF~~1:10~50

IHC-P~~1:10~50

WB~~1:1000

E~~Use at an assay dependent concentration.

Format

Purified polyclonal antibody supplied in PBS with 0.09% (W/V) sodium azide. This antibody is prepared by Saturated Ammonium Sulfate (SAS) precipitation followed by dialysis against PBS.

Storage

Maintain refrigerated at 2-8°C for up to 2 weeks. For long term storage store at -20°C in small aliquots to prevent freeze-thaw cycles.

Precautions

EDNRB Antibody (C-term) is for research use only and not for use in diagnostic or therapeutic procedures.

EDNRB Antibody (C-term) - Protein Information

Name EDNRB ([HGNC:3180](#))

Synonyms ETRB

Function Non-specific receptor for endothelin 1, 2, and 3. Mediates its action by association with G proteins that activate a phosphatidylinositol-calcium second messenger system.

Cellular Location

Cell membrane; Multi-pass membrane protein. Note=internalized after activation by endothelins.

Tissue Location

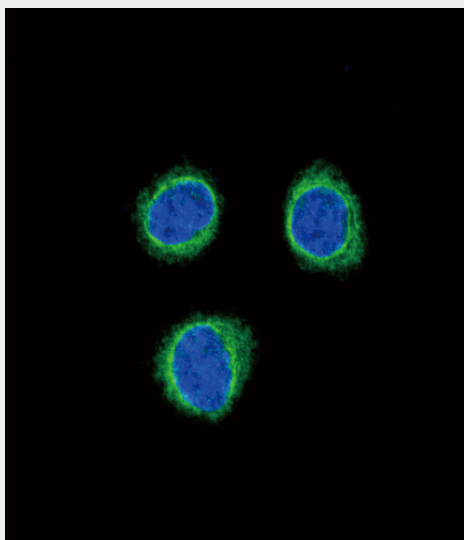
Expressed in placental stem villi vessels, but not in cultured placental villi smooth muscle cells

EDNRB Antibody (C-term) - Protocols

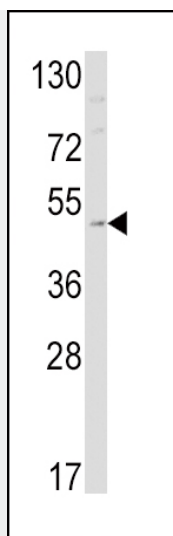
Provided below are standard protocols that you may find useful for product applications.

- [Western Blot](#)
- [Blocking Peptides](#)
- [Dot Blot](#)
- [Immunohistochemistry](#)
- [Immunofluorescence](#)
- [Immunoprecipitation](#)
- [Flow Cytometry](#)
- [Cell Culture](#)

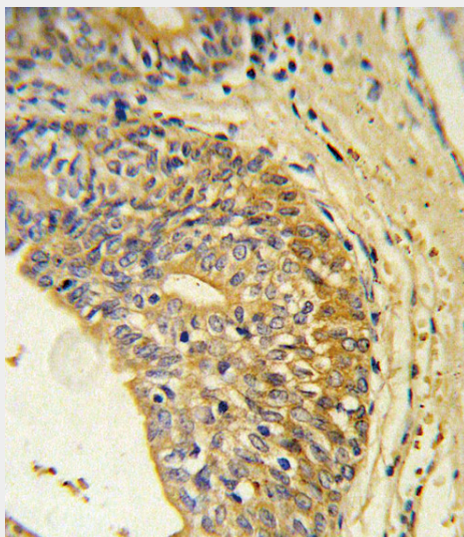
EDNRB Antibody (C-term) - Images



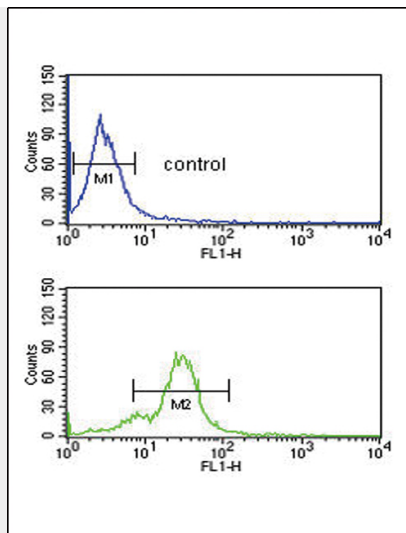
Confocal immunofluorescent analysis of EDNRB Antibody (C-term)(Cat. #AP6789b) with 293 cell followed by Alexa Fluor®488-conjugated goat anti-rabbit IgG (green). DAPI was used to stain the cell nuclear (blue).



Western blot analysis of EDNRB Antibody (C-term) (Cat. #AP6789b) in mouse cerebellum tissue lysates (35ug/lane). EDNRB (arrow) was detected using the purified Pab.



EDNRB Antibody (C-term) (Cat. #AP6789b) immunohistochemistry analysis in formalin fixed and paraffin embedded human prostate carcinoma followed by peroxidase conjugation of the secondary antibody and DAB staining. This data demonstrates the use of EDNRB Antibody (C-term) for immunohistochemistry. Clinical relevance has not been evaluated.



EDNRB Antibody (C-term) (Cat. #AP6789b) flow cytometric analysis of MDA-MB435 cells (bottom histogram) compared to a negative control cell (top histogram). FITC-conjugated goat-anti-rabbit secondary antibodies were used for the analysis.

EDNRB Antibody (C-term) - Background

EDNRB is a G protein-coupled receptor which activates a phosphatidylinositol-calcium second messenger system. Its ligand, endothelin, consists of a family of three potent vasoactive peptides: ET1, ET2, and ET3. Studies suggest that the multigenic disorder, Hirschsprung disease type 2, is due to mutations in the endothelin receptor type B gene.

EDNRB Antibody (C-term) - References

MacClellan, L.R., et.al., Stroke 40 (10), E550-E557 (2009)