

Caspase-2 (phospho Ser157) Polyclonal Antibody
Catalog # AP67929**Specification**

Caspase-2 (phospho Ser157) Polyclonal Antibody - Product Information

Application	IHC-P
Primary Accession	P42575
Reactivity	Human
Host	Rabbit
Clonality	Polyclonal

Caspase-2 (phospho Ser157) Polyclonal Antibody - Additional Information**Gene ID** 835**Other Names**

CASP2; ICH1; NEDD2; Caspase-2; CASP-2; Neural precursor cell expressed developmentally down-regulated protein 2; NEDD-2; Protease ICH-1

Dilution

IHC-P~~N/A

Format

Liquid in PBS containing 50% glycerol, 0.5% BSA and 0.09% (W/V) sodium azide.

Storage Conditions

-20°C

Caspase-2 (phospho Ser157) Polyclonal Antibody - Protein Information**Name** CASP2**Synonyms** ICH1, NEDD2**Function**

Is a regulator of the cascade of caspases responsible for apoptosis execution (PubMed:11156409, PubMed:15073321, PubMed:8087842). Might function by either activating some proteins required for cell death or inactivating proteins necessary for cell survival (PubMed:15073321). Associates with PIDD1 and CRADD to form the PIDDosome, a complex that activates CASP2 and triggers apoptosis in response to genotoxic stress (PubMed:15073321).

Tissue Location

Expressed at higher levels in the embryonic lung, liver and kidney than in the heart and brain. In adults, higher level expression is seen in the placenta, lung, kidney, and pancreas than in the

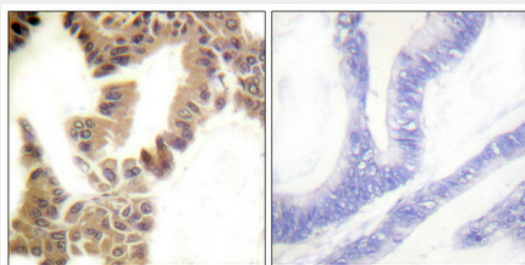
heart, brain, liver and skeletal muscle

Caspase-2 (phospho Ser157) Polyclonal Antibody - Protocols

Provided below are standard protocols that you may find useful for product applications.

- [Western Blot](#)
- [Blocking Peptides](#)
- [Dot Blot](#)
- [Immunohistochemistry](#)
- [Immunofluorescence](#)
- [Immunoprecipitation](#)
- [Flow Cytometry](#)
- [Cell Culture](#)

Caspase-2 (phospho Ser157) Polyclonal Antibody - Images



Immunohistochemical analysis of paraffin-embedded Human lung cancer. Antibody was diluted at 1:100(4°,overnight). High-pressure and temperature Tris-EDTA,pH8.0 was used for antigen retrieval. Negative contrl (right) obtained from antibody was pre-absorbed by immunogen peptide.

Caspase-2 (phospho Ser157) Polyclonal Antibody - Background

Involved in the activation cascade of caspases responsible for apoptosis execution. Might function by either activating some proteins required for cell death or inactivating proteins necessary for cell survival (PubMed:15073321). Associates with PIDD1 and CRADD to form the PIDDosome, a complex that activates CASP2 and triggers apoptosis in response to genotoxic stress (PubMed:15073321).