

**GZMM Antibody (Center)**  
**Purified Rabbit Polyclonal Antibody (Pab)**  
**Catalog # AP6792C**

**Specification**

---

**GZMM Antibody (Center) - Product Information**

Application	WB, IHC-P, FC,E
Primary Accession	<a href="#">P51124</a>
Reactivity	Human
Host	Rabbit
Clonality	Polyclonal
Isotype	Rabbit IgG
Antigen Region	84-113

**GZMM Antibody (Center) - Additional Information**

**Gene ID** 3004

**Other Names**

Granzyme M, 3421-, Met-1 serine protease, Hu-Met-1, Met-ase, Natural killer cell granular protease, GZMM, MET1

**Target/Specificity**

This GZMM antibody is generated from rabbits immunized with a KLH conjugated synthetic peptide between 84-113 amino acids from the Central region of human GZMM.

**Dilution**

WB~~1:1000  
IHC-P~~1:10~50  
FC~~1:10~50

**Format**

Purified polyclonal antibody supplied in PBS with 0.09% (W/V) sodium azide. This antibody is prepared by Saturated Ammonium Sulfate (SAS) precipitation followed by dialysis against PBS.

**Storage**

Maintain refrigerated at 2-8°C for up to 2 weeks. For long term storage store at -20°C in small aliquots to prevent freeze-thaw cycles.

**Precautions**

GZMM Antibody (Center) is for research use only and not for use in diagnostic or therapeutic procedures.

**GZMM Antibody (Center) - Protein Information**

**Name** GZMM

**Synonyms** MET1

**Function** Cleaves peptide substrates after methionine, leucine, and norleucine. Physiological substrates include EZR, alpha-tubulins and the apoptosis inhibitor BIRC5/Survivin. Promotes caspase activation and subsequent apoptosis of target cells.

**Cellular Location**

Secreted. Cytoplasmic granule. Note=Granules of large granular lymphocytes

**Tissue Location**

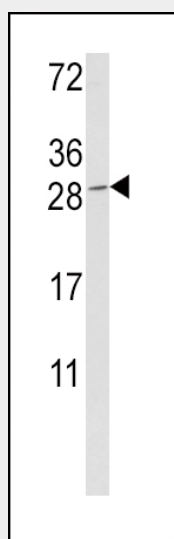
Highly and constitutively expressed in activated natural killer (NK) cells.

**GZMM Antibody (Center) - Protocols**

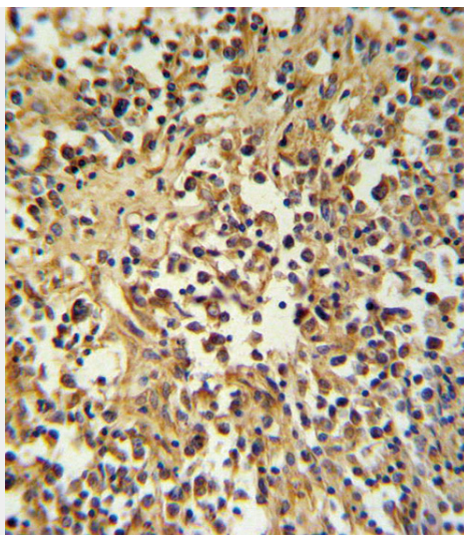
Provided below are standard protocols that you may find useful for product applications.

- [Western Blot](#)
- [Blocking Peptides](#)
- [Dot Blot](#)
- [Immunohistochemistry](#)
- [Immunofluorescence](#)
- [Immunoprecipitation](#)
- [Flow Cytometry](#)
- [Cell Culture](#)

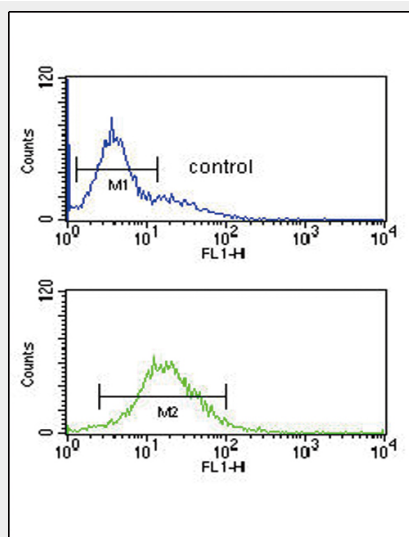
**GZMM Antibody (Center) - Images**



Western blot analysis of GZMM Antibody (Center) (Cat. #AP6792c) in K562 cell line lysates (35ug/lane). GZMM (arrow) was detected using the purified Pab.



GZMM Antibody (Center) (Cat. #AP6792c) IHC analysis in formalin fixed and paraffin embedded human lymph tissue followed by peroxidase conjugation of the secondary antibody and DAB staining. This data demonstrates the use of the GZMM Antibody (Center) for immunohistochemistry. Clinical relevance has not been evaluated.



GZMM Antibody (Center) (Cat. #AP6792c) flow cytometric analysis of K562 cells (bottom histogram) compared to a negative control cell (top histogram). FITC-conjugated goat-anti-rabbit secondary antibodies were used for the analysis.

### **GZMM Antibody (Center) - Background**

GZMM cleaves peptide substrates after methionine, leucine, and norleucine.

### **GZMM Antibody (Center) - References**

Mahrus, S., et al., J. Biol. Chem. 279 (52), 54275-54282 (2004)