

Presenilin 2 (phospho Ser330) Polyclonal Antibody
Catalog # AP67956**Specification****Presenilin 2 (phospho Ser330) Polyclonal Antibody - Product Information**

Application	WB, IHC-P
Primary Accession	P49810
Reactivity	Human, Mouse, Rat
Host	Rabbit
Clonality	Polyclonal

Presenilin 2 (phospho Ser330) Polyclonal Antibody - Additional Information**Gene ID** 5664**Other Names**

PSEN2; AD4; PS2; PSNL2; STM2; Presenilin-2; PS-2; AD3LP; AD5; E5-1; STM-2

Dilution

WB~~Western Blot: 1/500 - 1/2000. Immunohistochemistry: 1/100 - 1/300. ELISA: 1/5000. Not yet tested in other applications.

IHC-P~~N/A

Format

Liquid in PBS containing 50% glycerol, 0.5% BSA and 0.09% (W/V) sodium azide.

Storage Conditions

-20°C

Presenilin 2 (phospho Ser330) Polyclonal Antibody - Protein Information**Name** PSEN2**Synonyms** AD4, PS2, PSNL2, STM2**Function**

Probable catalytic subunit of the gamma-secretase complex, an endoprotease complex that catalyzes the intramembrane cleavage of integral membrane proteins such as Notch receptors and APP (amyloid- beta precursor protein). Requires the other members of the gamma- secretase complex to have a protease activity. May play a role in intracellular signaling and gene expression or in linking chromatin to the nuclear membrane. May function in the cytoplasmic partitioning of proteins. The holoprotein functions as a calcium-leak channel that allows the passive movement of calcium from endoplasmic reticulum to cytosol and is involved in calcium homeostasis (PubMed:16959576). Is a regulator of mitochondrion-endoplasmic reticulum membrane tethering and modulates calcium ions shuttling between ER and mitochondria (PubMed:21285369).

Cellular Location

Endoplasmic reticulum membrane; Multi-pass membrane protein. Golgi apparatus membrane; Multi-pass membrane protein

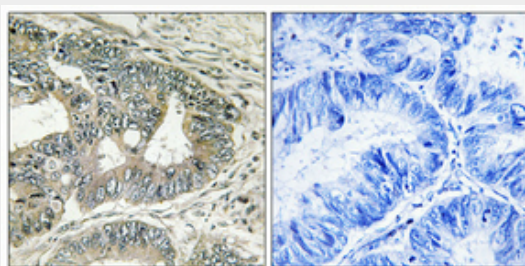
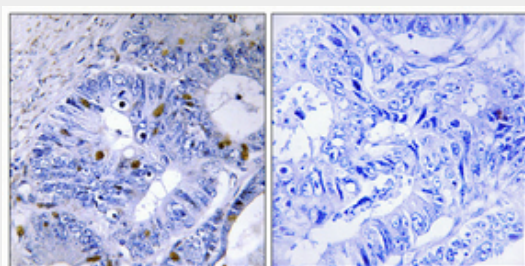
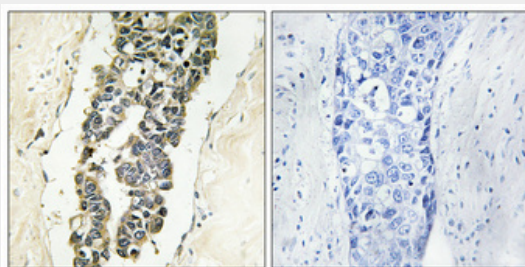
Tissue Location

Isoform 1 is seen in the placenta, skeletal muscle and heart while isoform 2 is seen in the heart, brain, placenta, liver, skeletal muscle and kidney.

Presenilin 2 (phospho Ser330) Polyclonal Antibody - Protocols

Provided below are standard protocols that you may find useful for product applications.

- [Western Blot](#)
- [Blocking Peptides](#)
- [Dot Blot](#)
- [Immunohistochemistry](#)
- [Immunofluorescence](#)
- [Immunoprecipitation](#)
- [Flow Cytometry](#)
- [Cell Culture](#)

Presenilin 2 (phospho Ser330) Polyclonal Antibody - Images

Presenilin 2 (phospho Ser330) Polyclonal Antibody - Background

Probable catalytic subunit of the gamma-secretase complex, an endoprotease complex that catalyzes the intramembrane cleavage of integral membrane proteins such as Notch receptors and APP (amyloid-beta precursor protein). Requires the other members of the gamma-secretase complex to have a protease activity. May play a role in intracellular signaling and gene expression or in linking chromatin to the nuclear membrane. May function in the cytoplasmic partitioning of proteins. The holoprotein functions as a calcium-leak channel that allows the passive movement of calcium from endoplasmic reticulum to cytosol and is involved in calcium homeostasis (PubMed:16959576). Is a regulator of mitochondrion- endoplasmic reticulum membrane tethering and modulates calcium ions shuttling between ER and mitochondria (PubMed:21285369).