

**Chromogranin-C Antibody (Center)**  
**Purified Rabbit Polyclonal Antibody (Pab)**  
**Catalog # AP6796c****Specification**

---

**Chromogranin-C Antibody (Center) - Product Information**

Application	WB, IHC-P,E
Primary Accession	<a href="#">P13521</a>
Other Accession	<a href="#">Q5FZP5</a>
Reactivity	Human
Predicted	Pig
Host	Rabbit
Clonality	Polyclonal
Isotype	Rabbit IgG
Calculated MW	70941
Antigen Region	246-274

**Chromogranin-C Antibody (Center) - Additional Information****Gene ID** 7857**Other Names**

Secretogranin-2, Chromogranin-C, Secretogranin II, SgII, Secretoneurin, SN, SCG2, CHGC

**Target/Specificity**

This Chromogranin-C antibody is generated from rabbits immunized with a KLH conjugated synthetic peptide between 246-274 amino acids from the Central region of human Chromogranin-C.

**Dilution**

WB~~1:1000

IHC-P~~1:50~100

**Format**

Purified polyclonal antibody supplied in PBS with 0.09% (W/V) sodium azide. This antibody is prepared by Saturated Ammonium Sulfate (SAS) precipitation followed by dialysis against PBS.

**Storage**

Maintain refrigerated at 2-8°C for up to 2 weeks. For long term storage store at -20°C in small aliquots to prevent freeze-thaw cycles.

**Precautions**

Chromogranin-C Antibody (Center) is for research use only and not for use in diagnostic or therapeutic procedures.

**Chromogranin-C Antibody (Center) - Protein Information****Name** SCG2

**Synonyms** CHGC

**Function** Neuroendocrine protein of the granin family that regulates the biogenesis of secretory granules.

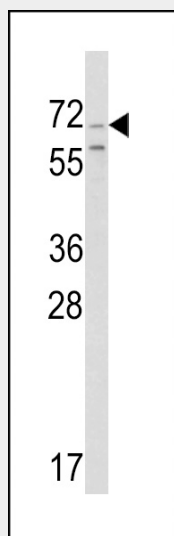
**Cellular Location**

Secreted. Note=Neuroendocrine and endocrine secretory granules

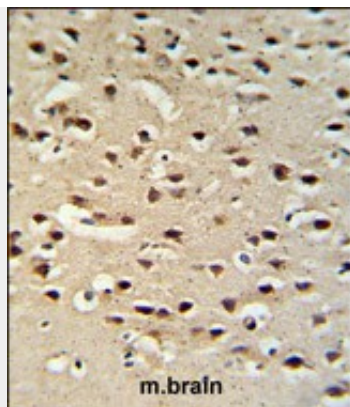
**Chromogranin-C Antibody (Center) - Protocols**

Provided below are standard protocols that you may find useful for product applications.

- [Western Blot](#)
- [Blocking Peptides](#)
- [Dot Blot](#)
- [Immunohistochemistry](#)
- [Immunofluorescence](#)
- [Immunoprecipitation](#)
- [Flow Cytometry](#)
- [Cell Culture](#)

**Chromogranin-C Antibody (Center) - Images**

Western blot analysis of Chromogranin-C Antibody (Center) (Cat. #AP6796c) in Ramos cell line lysates (35ug/lane). SCG2 (arrow) was detected using the purified Pab.



Chromogranin-C Antibody (Center) (Cat. #AP6796c) IHC analysis in formalin fixed and paraffin embedded mouse brain tissue followed by peroxidase conjugation of the secondary antibody and DAB staining. This data demonstrates the use of the Chromogranin-C Antibody (Center) for immunohistochemistry. Clinical relevance has not been evaluated.

#### **Chromogranin-C Antibody (Center) - Background**

Chromogranin-C is a member of the chromogranin/secretogranin family of neuroendocrine secretory proteins. Studies in rodents suggest that the full-length protein, secretogranin II, is involved in the packaging or sorting of peptide hormones and neuropeptides into secretory vesicles. The full-length protein is cleaved to produce the active peptide secretoneurin, which exerts chemotactic effects on specific cell types, and EM66, whose function is unknown.

#### **Chromogranin-C Antibody (Center) - References**

Li,L., et.al., Cell Death Differ. 15 (5), 879-888 (2008)