

**CUEDC2 Antibody (C-term)**  
**Purified Rabbit Polyclonal Antibody (Pab)**  
**Catalog # AP6803b****Specification**

---

**CUEDC2 Antibody (C-term) - Product Information**

Application	WB, IHC-P, FC,E
Primary Accession	<a href="#">Q9H467</a>
Other Accession	<a href="#">A1L131</a> , <a href="#">Q9CXX9</a> , <a href="#">Q3ZBN4</a>
Reactivity	Human
Predicted	Bovine, Mouse, Rat
Host	Rabbit
Clonality	Polyclonal
Isotype	Rabbit IgG
Calculated MW	32009
Antigen Region	239-267

**CUEDC2 Antibody (C-term) - Additional Information****Gene ID** 79004**Other Names**

CUE domain-containing protein 2, CUEDC2, C10orf66

**Target/Specificity**

This CUEDC2 antibody is generated from rabbits immunized with a KLH conjugated synthetic peptide between 239-267 amino acids from the C-terminal region of human CUEDC2.

**Dilution**

WB~~1:1000  
IHC-P~~1:50~100  
FC~~1:10~50

**Format**

Purified polyclonal antibody supplied in PBS with 0.09% (W/V) sodium azide. This antibody is prepared by Saturated Ammonium Sulfate (SAS) precipitation followed by dialysis against PBS.

**Storage**

Maintain refrigerated at 2-8°C for up to 2 weeks. For long term storage store at -20°C in small aliquots to prevent freeze-thaw cycles.

**Precautions**

CUEDC2 Antibody (C-term) is for research use only and not for use in diagnostic or therapeutic procedures.

**CUEDC2 Antibody (C-term) - Protein Information****Name** CUEDC2

**Synonyms** C10orf66

**Function** Down-regulates ESR1 protein levels through the ubiquitination-proteasome pathway, regardless of the presence of 17 beta-estradiol. Also involved in 17 beta-estradiol-induced ESR1 degradation. Controls PGR protein levels through a similar mechanism.

**Cellular Location**

Cytoplasm. Nucleus

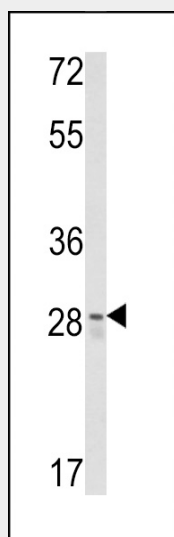
**Tissue Location**

Significantly up-regulated in breast tumor tissues compared with matched adjacent normal tissues (at protein level) Levels inversely correlate with ESR1 in breast cancers and are lower in low-grade tumors compared to high-grade tumors

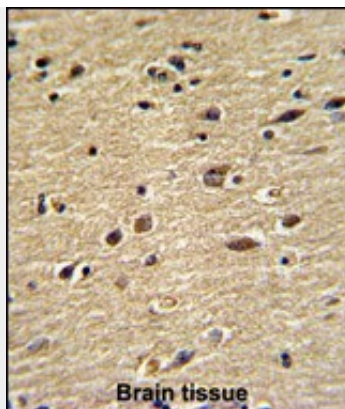
**CUEDC2 Antibody (C-term) - Protocols**

Provided below are standard protocols that you may find useful for product applications.

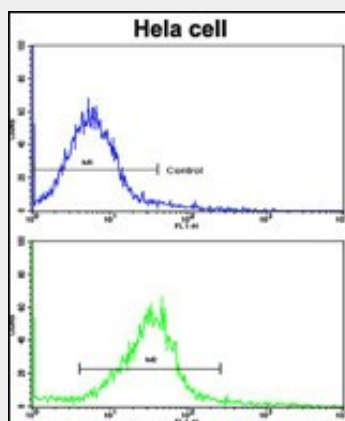
- [Western Blot](#)
- [Blocking Peptides](#)
- [Dot Blot](#)
- [Immunohistochemistry](#)
- [Immunofluorescence](#)
- [Immunoprecipitation](#)
- [Flow Cytometry](#)
- [Cell Culture](#)

**CUEDC2 Antibody (C-term) - Images**

Western blot analysis of CUEDC2 Antibody (C-term) (Cat. #AP6803b) in Y79 cell line lysates (35ug/lane). CUEDC2 (arrow) was detected using the purified Pab.



Formalin-fixed and paraffin-embedded human brain with CUEDC2 Antibody (C-term), which was peroxidase-conjugated to the secondary antibody, followed by DAB staining. This data demonstrates the use of this antibody for immunohistochemistry; clinical relevance has not been evaluated.



Flow cytometric analysis of hela cells using CUEDC2 Antibody (C-term)(bottom histogram) compared to a negative control cell (top histogram). FITC-conjugated goat-anti-rabbit secondary antibodies were used for the analysis.

#### **CUEDC2 Antibody (C-term) - Background**

CUEDC2 controls PGR and ESR1 protein levels through their targeting for ubiquitination and subsequent proteasomal degradation.

#### **CUEDC2 Antibody (C-term) - References**

Grupe,A., et.al., Am. J. Hum. Genet. 78 (1), 78-88 (2006)