

**MTMR9 Antibody**  
**Purified Rabbit Polyclonal Antibody (Pab)**  
**Catalog # AP6808a****Specification**

---

**MTMR9 Antibody - Product Information**

Application	IHC-P, WB,E
Primary Accession	<a href="#">Q96QG7</a>
Other Accession	<a href="#">Q96QG7</a> , <a href="#">NP_060147</a>
Reactivity	Human, Mouse
Host	Rabbit
Clonality	Polyclonal
Isotype	Rabbit IgG
Antigen Region	518-549

**MTMR9 Antibody - Additional Information****Gene ID** 66036**Other Names**

Myotubularin-related protein 9, 313-, MTMR8

**Target/Specificity**

This MTMR8 antibody is generated from rabbits immunized with a KLH conjugated synthetic peptide between 518-549 amino acids from the C-terminal region of human MTMR8.

**Dilution**

IHC-P~~1:10~50

WB~~1:1000

E~~Use at an assay dependent concentration.

**Format**

Purified polyclonal antibody supplied in PBS with 0.09% (W/V) sodium azide. This antibody is prepared by Saturated Ammonium Sulfate (SAS) precipitation followed by dialysis against PBS.

**Storage**

Maintain refrigerated at 2-8°C for up to 2 weeks. For long term storage store at -20°C in small aliquots to prevent freeze-thaw cycles.

**Precautions**

MTMR9 Antibody is for research use only and not for use in diagnostic or therapeutic procedures.

**MTMR9 Antibody - Protein Information****Name** MTMR9**Synonyms** C8orf9, MTMR8

**Function** Acts as an adapter for myotubularin-related phosphatases (PubMed:[19038970](#), PubMed:[22647598](#)). Increases lipid phosphatase MTMR6 catalytic activity, specifically towards phosphatidylinositol 3,5- biphosphate and MTMR6 binding affinity for phosphorylated phosphatidylinositols (PubMed:[19038970](#), PubMed:[22647598](#)). Positively regulates lipid phosphatase MTMR7 catalytic activity (By similarity). Increases MTMR8 catalytic activity towards phosphatidylinositol 3- phosphate (PubMed:[22647598](#)). The formation of the MTMR6-MTMR9 complex, stabilizes both MTMR6 and MTMR9 protein levels (PubMed:[19038970](#)). Stabilizes MTMR8 protein levels (PubMed:[22647598](#)). Plays a role in the late stages of macropinocytosis possibly by regulating MTMR6-mediated dephosphorylation of phosphatidylinositol 3-phosphate in membrane ruffles (PubMed:[24591580](#)). Negatively regulates autophagy, in part via its association with MTMR8 (PubMed:[22647598](#)). Negatively regulates DNA damage-induced apoptosis, in part via its association with MTMR6 (PubMed:[19038970](#), PubMed:[22647598](#)). Does not bind mono-, di- and tri-phosphorylated phosphatidylinositols, phosphatidic acid and phosphatidylserine (PubMed:[19038970](#)).

#### **Cellular Location**

Cytoplasm. Cell projection, ruffle membrane {ECO:0000250|UniProtKB:Q9Z2D0}; Peripheral membrane protein; Cytoplasmic side. Cytoplasm, perinuclear region Endoplasmic reticulum. Note=Localizes to ruffles during EGF-induced macropinocytosis (By similarity) Colocalizes with MTMR6 to the perinuclear region (PubMed:19038970) Partially localizes to the endoplasmic reticulum (PubMed:19038970) {ECO:0000250|UniProtKB:Q9Z2D0, ECO:0000269|PubMed:19038970}

#### **Tissue Location**

Expressed in many tissues.

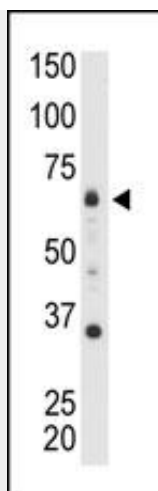
### **MTMR9 Antibody - Protocols**

Provided below are standard protocols that you may find useful for product applications.

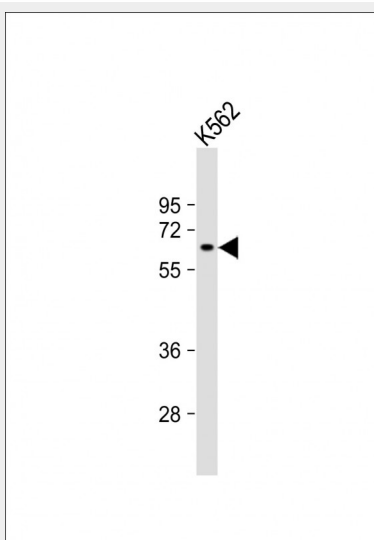
- [Western Blot](#)
- [Blocking Peptides](#)
- [Dot Blot](#)
- [Immunohistochemistry](#)
- [Immunofluorescence](#)
- [Immunoprecipitation](#)
- [Flow Cytometry](#)
- [Cell Culture](#)

### **MTMR9 Antibody - Images**

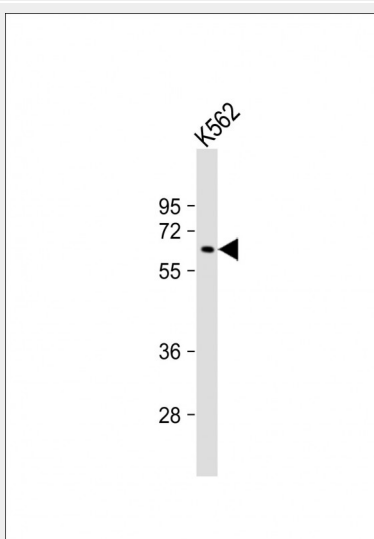




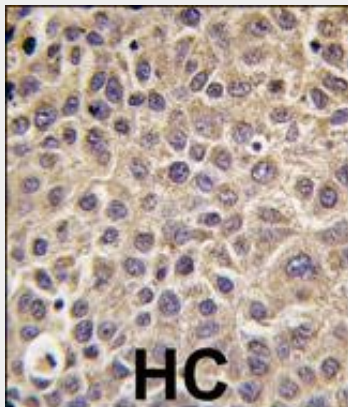
Anti-MTMR9 Antibody (Cat. #AP6808a) is used in Western blot to detect MTMR9 in mouse heart tissue lysate.



Anti-MTMR9 Antibody at 1:1000 dilution + K562 whole cell lysate Lysates/proteins at 20 µg per lane. Secondary Goat Anti-Rabbit IgG, (H+L), Peroxidase conjugated at 1/10000 dilution. Predicted band size : 63 kDa Blocking/Dilution buffer: 5% NFDM/TBST.



Anti-MTMR9 Antibody at 1:1000 dilution + K562 whole cell lysate Lysates/proteins at 20 µg per lane. Secondary Goat Anti-Rabbit IgG, (H+L), Peroxidase conjugated at 1/10000 dilution. Predicted band size : 63 kDa Blocking/Dilution buffer: 5% NFDM/TBST.



Formalin-fixed and paraffin-embedded human hepatocarcinoma tissue reacted with MTMR9 antibody, which was peroxidase-conjugated to the secondary antibody, followed by DAB staining. This data demonstrates the use of this antibody for immunohistochemistry; clinical relevance has not been evaluated.

#### **MTMR9 Antibody - Background**

MTMR8 is a myotubularin-related protein that is atypical to most other members of the myotubularin-related protein family because it has no dual-specificity phosphatase domain. The encoded protein contains a double-helical motif similar to the SET interaction domain, which is thought to have a role in the control of cell proliferation. In mouse, a protein similar to the encoded protein binds with MTMR7, and together they dephosphorylate phosphatidylinositol 3-phosphate and inositol 1,3-bisphosphate.

#### **MTMR9 Antibody - References**

Appel, S., et al., Eur. J. Hum. Genet. 10(1):17-25 (2002).  
Appel, S., et al., Genomics 75 (1-3), 6-8 (2001).