

ABCB7 Polyclonal Antibody
Catalog # AP68229**Specification****ABCB7 Polyclonal Antibody - Product Information**

Application	WB, IHC-P
Primary Accession	O75027
Reactivity	Human
Host	Rabbit
Clonality	Polyclonal

ABCB7 Polyclonal Antibody - Additional Information**Gene ID 22****Other Names**

ABCB7; ABC7; ATP-binding cassette sub-family B member 7; mitochondrial; ATP-binding cassette transporter 7; ABC transporter 7 protein

Dilution

WB~~Western Blot: 1/500 - 1/2000. Immunohistochemistry: 1/100 - 1/300. ELISA: 1/40000. Not yet tested in other applications.

IHC-P~~N/A

Format

Liquid in PBS containing 50% glycerol, 0.5% BSA and 0.09% (W/V) sodium azide.

Storage Conditions

-20°C

ABCB7 Polyclonal Antibody - Protein Information

Name ABCB7 ([HGNC:48](#))

Synonyms ABC7

Function

Exports glutathione-coordinated iron-sulfur clusters such as [2Fe-2S]-(GS)₄ cluster from the mitochondria to the cytosol in an ATP- dependent manner allowing the assembly of the cytosolic iron-sulfur (Fe/S) cluster-containing proteins and participates in iron homeostasis (PubMed:10196363, PubMed:17192393, PubMed:33157103). Moreover, through a functional complex formed of ABCB7, FECH and ABCB10, also plays a role in the cellular iron homeostasis, mitochondrial function and heme biosynthesis (PubMed:30765471). In cardiomyocytes, regulates cellular iron homeostasis and cellular reactive oxygen species (ROS) levels through its interaction with COX4I1 (By similarity). May also play a role in hematopoiesis (By

similarity).

Cellular Location

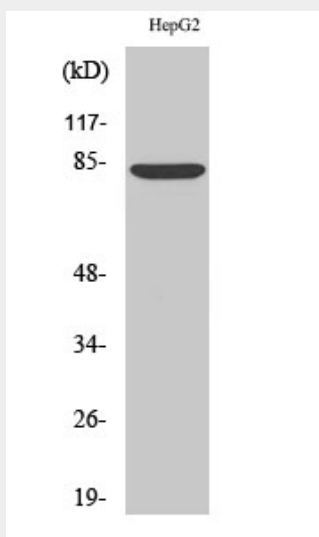
Mitochondrion inner membrane {ECO:0000250|UniProtKB:P40416}; Multi-pass membrane protein {ECO:0000250|UniProtKB:P40416}

ABCB7 Polyclonal Antibody - Protocols

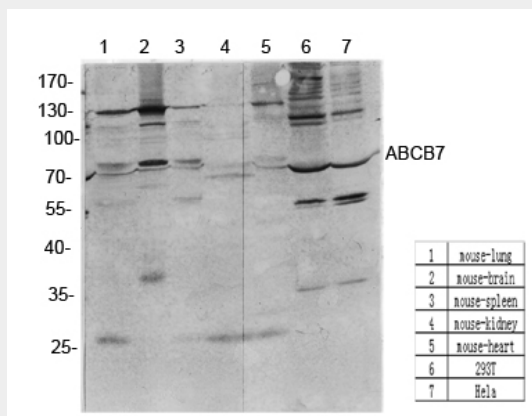
Provided below are standard protocols that you may find useful for product applications.

- [Western Blot](#)
- [Blocking Peptides](#)
- [Dot Blot](#)
- [Immunohistochemistry](#)
- [Immunofluorescence](#)
- [Immunoprecipitation](#)
- [Flow Cytometry](#)
- [Cell Culture](#)

ABCB7 Polyclonal Antibody - Images



Western Blot analysis of various cells using ABCB7 Polyclonal Antibody diluted at 1:1000



Western Blot analysis of various cells using antibody diluted at 1:1000. Secondary antibody was diluted at 1:20000

ABCB7 Polyclonal Antibody - Background

Could be involved in the transport of heme from the mitochondria to the cytosol. Plays a central role in the maturation of cytosolic iron-sulfur (Fe/S) cluster-containing proteins.