

Actin α 1 Polyclonal Antibody
Catalog # AP68280**Specification**

Actin α 1 Polyclonal Antibody - Product Information

Application	WB, IHC-P
Primary Accession	P68133
Reactivity	Human, Mouse, Rat
Host	Rabbit
Clonality	Polyclonal

Actin α 1 Polyclonal Antibody - Additional Information**Gene ID** 58**Other Names**

ACTA1; ACTA; Actin; alpha skeletal muscle; Alpha-actin-1

Dilution

WB~~Western Blot: 1/500 - 1/2000. Immunohistochemistry: 1/100 - 1/300. ELISA: 1/20000. Not yet tested in other applications.

IHC-P~~N/A

Format

Liquid in PBS containing 50% glycerol, 0.5% BSA and 0.09% (W/V) sodium azide.

Storage Conditions

-20°C

Actin α 1 Polyclonal Antibody - Protein Information**Name** ACTA1**Synonyms** ACTA**Function**

Actins are highly conserved proteins that are involved in various types of cell motility and are ubiquitously expressed in all eukaryotic cells.

Cellular Location

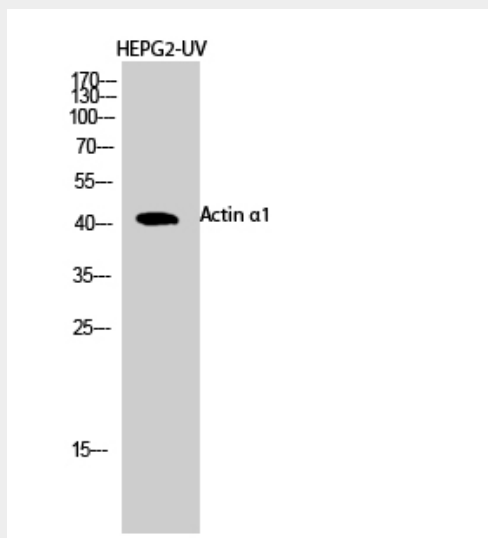
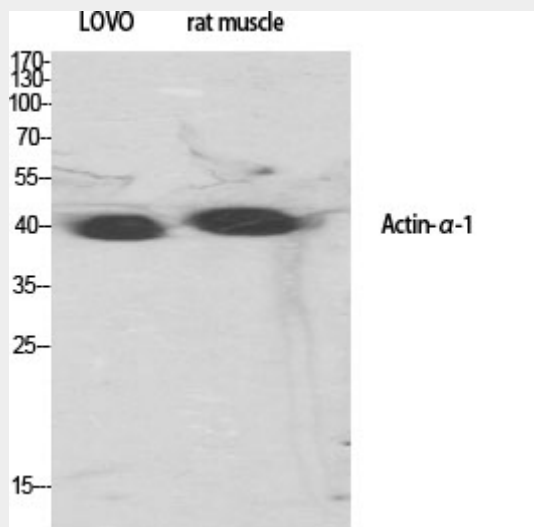
Cytoplasm, cytoskeleton.

Actin α 1 Polyclonal Antibody - Protocols

Provided below are standard protocols that you may find useful for product applications.

- [Western Blot](#)
- [Blocking Peptides](#)
- [Dot Blot](#)
- [Immunohistochemistry](#)
- [Immunofluorescence](#)
- [Immunoprecipitation](#)
- [Flow Cytometry](#)
- [Cell Culture](#)

Actin α 1 Polyclonal Antibody - Images



Actin α 1 Polyclonal Antibody - Background

Actins are highly conserved proteins that are involved in various types of cell motility and are ubiquitously expressed in all eukaryotic cells.