

Actin α 3 Polyclonal Antibody
Catalog # AP68281**Specification**

Actin α 3 Polyclonal Antibody - Product Information

Application	WB, IHC-P, IF
Primary Accession	P63267
Reactivity	Human, Mouse, Rat
Host	Rabbit
Clonality	Polyclonal

Actin α 3 Polyclonal Antibody - Additional Information**Gene ID 72****Other Names**

ACTG2; ACTA3; ACTL3; ACTSG; Actin; gamma-enteric smooth muscle; Alpha-actin-3;
Gamma-2-actin; Smooth muscle gamma-actin

Dilution

WB~~Western Blot: 1/500 - 1/2000. Immunohistochemistry: 1/100 - 1/300. Immunofluorescence:
1/200 - 1/1000. ELISA: 1/20000. Not yet tested in other applications.
IHC-P~~N/A
IF~~1:50~200

Format

Liquid in PBS containing 50% glycerol, 0.5% BSA and 0.09% (W/V) sodium azide.

Storage Conditions

-20°C

Actin α 3 Polyclonal Antibody - Protein Information**Name** ACTG2**Synonyms** ACTA3, ACTL3, ACTSG**Function**

Actins are highly conserved proteins that are involved in various types of cell motility and are ubiquitously expressed in all eukaryotic cells.

Cellular Location

Cytoplasm, cytoskeleton.

Tissue Location

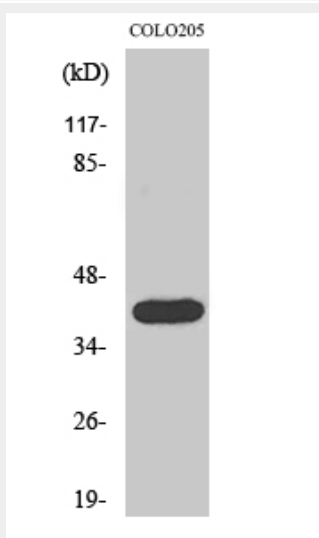
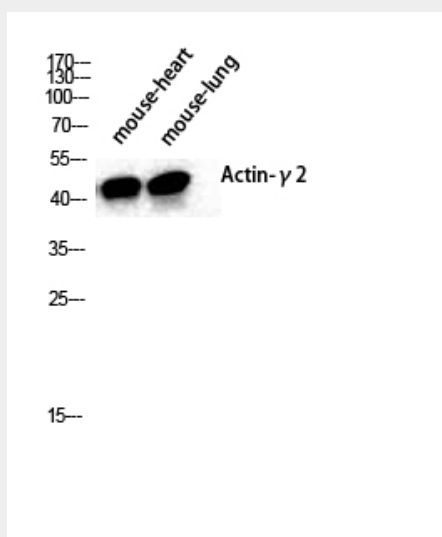
In the intestine, abundantly expressed in smooth muscle cells of muscularis mucosa and muscularis propria. Also detected in intestinal vascular smooth muscle cells

Actin $\alpha 3$ Polyclonal Antibody - Protocols

Provided below are standard protocols that you may find useful for product applications.

- [Western Blot](#)
- [Blocking Peptides](#)
- [Dot Blot](#)
- [Immunohistochemistry](#)
- [Immunofluorescence](#)
- [Immunoprecipitation](#)
- [Flow Cytometry](#)
- [Cell Culture](#)

Actin $\alpha 3$ Polyclonal Antibody - Images



Actin $\alpha 3$ Polyclonal Antibody - Background

Actins are highly conserved proteins that are involved in various types of cell motility and are ubiquitously expressed in all eukaryotic cells.