

ADCK1 Polyclonal Antibody
Catalog # AP68303**Specification**

ADCK1 Polyclonal Antibody - Product Information

Application	WB, IHC-P, IF
Primary Accession	Q86TW2
Reactivity	Human, Mouse
Host	Rabbit
Clonality	Polyclonal

ADCK1 Polyclonal Antibody - Additional Information**Gene ID** 57143**Other Names**

ADCK1; Uncharacterized aarF domain-containing protein kinase 1

Dilution

WB~~Western Blot: 1/500 - 1/2000. Immunohistochemistry: 1/100 - 1/300. Immunofluorescence: 1/200 - 1/1000. ELISA: 1/5000. Not yet tested in other applications.

IHC-P~~N/A

IF~~1:50~200

Format

Liquid in PBS containing 50% glycerol, 0.5% BSA and 0.09% (W/V) sodium azide.

Storage Conditions

-20°C

ADCK1 Polyclonal Antibody - Protein Information**Name** ADCK1 {ECO:0000303|PubMed:31125351}**Function**

Appears to be essential for maintaining mitochondrial cristae formation and mitochondrial function by acting via YME1L1 in a kinase- independent manner to regulate essential mitochondrial structural proteins OPA1 and IMMT (PubMed:31125351). The action of this enzyme is not yet clear (Probable). It is not known if it has protein kinase activity and what type of substrate it would phosphorylate (Ser, Thr or Tyr) (Probable).

Cellular Location

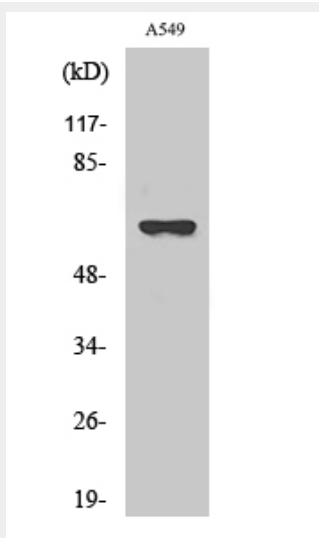
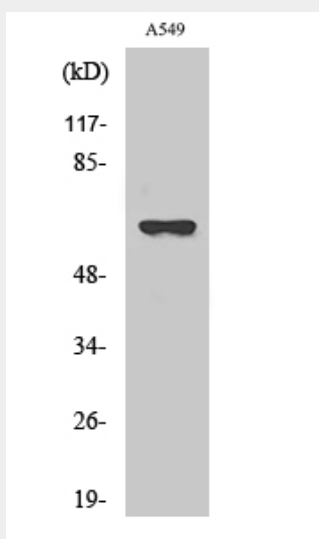
Mitochondrion.

ADCK1 Polyclonal Antibody - Protocols

Provided below are standard protocols that you may find useful for product applications.

- [Western Blot](#)
- [Blocking Peptides](#)
- [Dot Blot](#)
- [Immunohistochemistry](#)
- [Immunofluorescence](#)
- [Immunoprecipitation](#)
- [Flow Cytometry](#)
- [Cell Culture](#)

ADCK1 Polyclonal Antibody - Images



ADCK1 Polyclonal Antibody - Background

The function of this protein is not yet clear. It is not known if it has protein kinase activity and what type of substrate it would phosphorylate (Ser, Thr or Tyr).