

**ADCK5 Polyclonal Antibody**  
**Catalog # AP68306****Specification**

---

**ADCK5 Polyclonal Antibody - Product Information**

Application	WB
Primary Accession	<a href="#">Q3MIX3</a>
Reactivity	Human
Host	Rabbit
Clonality	Polyclonal

**ADCK5 Polyclonal Antibody - Additional Information****Gene ID** 203054**Other Names**

ADCK5; Uncharacterized aarF domain-containing protein kinase 5

**Dilution**

WB~~Western Blot: 1/500 - 1/2000. Immunofluorescence: 1/200 - 1/1000. ELISA: 1/20000. Not yet tested in other applications.

**Format**

Liquid in PBS containing 50% glycerol, 0.5% BSA and 0.09% (W/V) sodium azide.

**Storage Conditions**

-20°C

**ADCK5 Polyclonal Antibody - Protein Information****Name** ADCK5**Function**

The function of this protein is not yet clear. It is not known if it has protein kinase activity and what type of substrate it would phosphorylate (Ser, Thr or Tyr).

**Cellular Location**

Membrane; Single-pass membrane protein

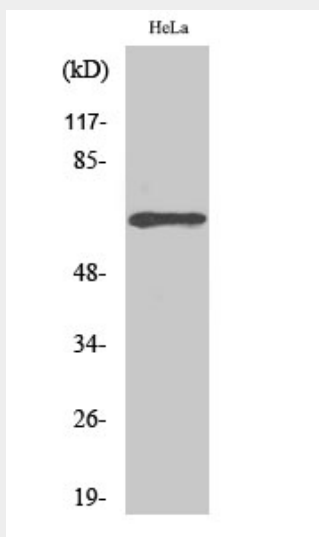
**ADCK5 Polyclonal Antibody - Protocols**

Provided below are standard protocols that you may find useful for product applications.

- [Western Blot](#)
- [Blocking Peptides](#)
- [Dot Blot](#)

- [Immunohistochemistry](#)
- [Immunofluorescence](#)
- [Immunoprecipitation](#)
- [Flow Cytometry](#)
- [Cell Culture](#)

#### **ADCK5 Polyclonal Antibody - Images**



#### **ADCK5 Polyclonal Antibody - Background**

The function of this protein is not yet clear. It is not known if it has protein kinase activity and what type of substrate it would phosphorylate (Ser, Thr or Tyr).